



[Go to Product page](#)

Datasheet for ABIN3029172  
**anti-TLR5 antibody (AA 71-102)**

3 Images

Overview

Quantity:	0.4 mL
Target:	TLR5
Binding Specificity:	AA 71-102
Reactivity:	Human, Mouse
Host:	Rabbit
Clonality:	Polyclonal
Conjugate:	This TLR5 antibody is un-conjugated
Application:	Western Blotting (WB), Immunohistochemistry (IHC), ELISA

Product Details

Immunogen:	A portion of amino acids 71-102 from the mouse protein was used as the immunogen for this TLR5 antibody.
Isotype:	Ig Fraction
Purification:	Purified

Target Details

Target:	TLR5
Alternative Name:	TLR5 ( <a href="#">TLR5 Products</a> )
Background:	TLR5, a Type I membrane protein belonging to the Toll-like receptor family, participates in the innate immune response to microbial agents. It also plays a role in mediating detection of bacterial flagellins. TLR5 acts via MyD88 and TRAF6, leading to NF-kappa-B activation, cytokine

## Target Details

---

secretion and the inflammatory response. This protein binds to TIRAP and MyD88 via their respective TIR domains TLR5 is highly expressed in liver, and is detected in lung and at very low levels in most other tissues. The TLR5 gene lies in a locus that is associated with susceptibility to Salmonella. Inbred strains of mice can be classified into 3 categories according to their resistance to infection with S.typhimurium: susceptible (BALB/c, C57BL/6, C3H/He), intermediate (DBA/2, C75L) and resistant (A, CBA). The strain MOLF/Ei is highly susceptible to the infection, has an unique TLR5 haplotype and a lower expression of TLR5.

UniProt: [Q9JLF7](#)

Pathways: [TLR Signaling](#), [Activation of Innate immune Response](#), [Cellular Response to Molecule of Bacterial Origin](#), [Toll-Like Receptors Cascades](#)

## Application Details

---

Application Notes: Titration of the TLR5 antibody may be required due to differences in protocols and secondary/substrate sensitivity.\. Western blot: 1:1000,IHC (Paraffin): 1:50-1:100

Restrictions: For Research Use only

## Handling

---

Format: Liquid

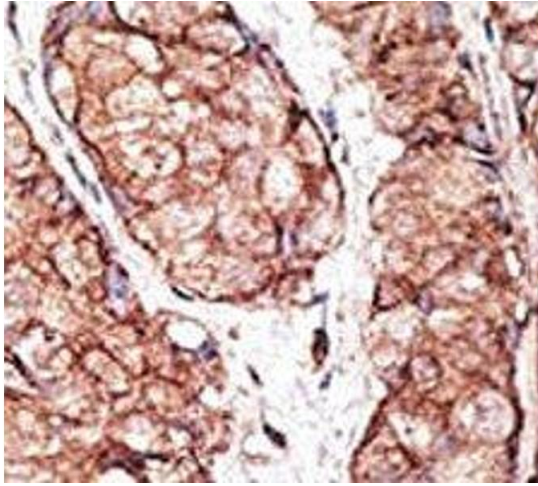
Buffer: In 1X PBS pH 7.4 with 0.09 % sodium azide

Preservative: Sodium azide

Precaution of Use: This product contains Sodium azide: a POISONOUS AND HAZARDOUS SUBSTANCE which should be handled by trained staff only.

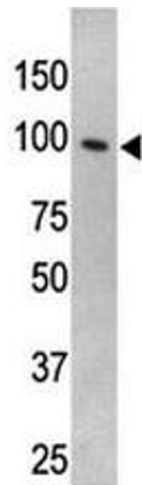
Storage: -20 °C

Storage Comment: Aliquot the TLR5 antibody and store frozen at -20°C or colder. Avoid repeated freeze-thaw cycles.



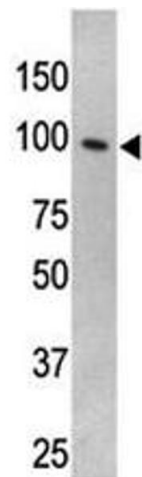
### Immunohistochemistry

**Image 1.** IHC analysis of FFPE human breast carcinoma tissue stained with the TLR5 antibody



### Western Blotting

**Image 2.** TLR5 antibody used in western blot to detect TLR5 in HL-60 cell lysate



### Western Blotting

**Image 3.** TLR5 antibody used in western blot to detect TLR5 in HL-60 cell lysate