



Datasheet for ABIN3029175
anti-TLR6 antibody (AA 1-30)



[Go to Product page](#)

3 Images

Overview

| | |
|----------------------|--|
| Quantity: | 0.4 mL |
| Target: | TLR6 |
| Binding Specificity: | AA 1-30 |
| Reactivity: | Human, Mouse |
| Host: | Rabbit |
| Clonality: | Polyclonal |
| Conjugate: | This TLR6 antibody is un-conjugated |
| Application: | Western Blotting (WB), ELISA, Immunohistochemistry (IHC) |

Product Details

| | |
|---------------|--|
| Immunogen: | A portion of amino acids 1-30 from the mouse protein was used as the immunogen for this TLR6 antibody. |
| Isotype: | Ig Fraction |
| Purification: | Purified |

Target Details

| | |
|-------------------|--|
| Target: | TLR6 |
| Alternative Name: | TLR6 (TLR6 Products) |
| Background: | TLR6 participates in the innate immune response to Gram-positive bacteria and fungi. Specifically recognizes diacylated and, to a lesser extent, triacylated lipopeptides. Acts via MYD88 and TRAF6, leading to NF-kappa-B activation, cytokine secretion and the inflammatory |

Target Details

response. Cooperates with TLR2 for the cellular activation. In complex with TLR4, promotes sterile inflammation in monocytes/macrophages in response to oxidized low-density lipoprotein (oxLDL) or amyloid-beta 42. In this context, the initial signal is provided by oxLDL- or amyloid-beta 42-binding to CD36. This event induces the formation of a heterodimer of TLR4 and TLR6, which is rapidly internalized and triggers inflammatory response, leading to the NF-kappa-B-dependent production of CXCL1, CXCL2 and CCL9 cytokines, via MYD88 signaling pathway, and CCL5 cytokine, via TICAM1 signaling pathway, as well as IL1B secretion. [UniProt]

UniProt: [Q9EPW9](#)

Pathways: [TLR Signaling](#), [Activation of Innate immune Response](#), [Cellular Response to Molecule of Bacterial Origin](#), [Toll-Like Receptors Cascades](#)

Application Details

Application Notes: Titration of the TLR6 antibody may be required due to differences in protocols and secondary/substrate sensitivity.\. IHC (Paraffin): 1:50-1:100,Western blot: 1:1000

Restrictions: For Research Use only

Handling

Format: Liquid

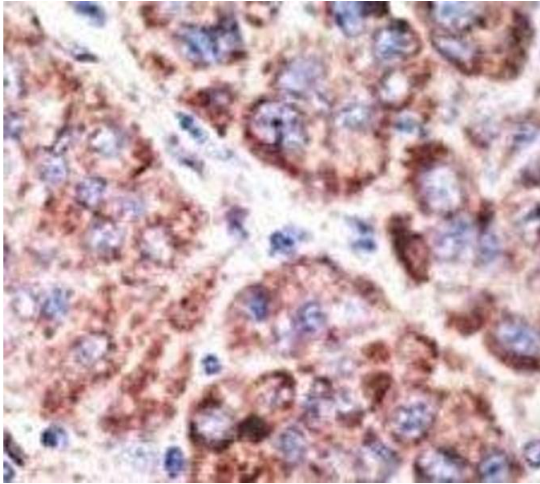
Buffer: In 1X PBS pH 7.4 with 0.09 % sodium azide

Preservative: Sodium azide

Precaution of Use: This product contains Sodium azide: a POISONOUS AND HAZARDOUS SUBSTANCE which should be handled by trained staff only.

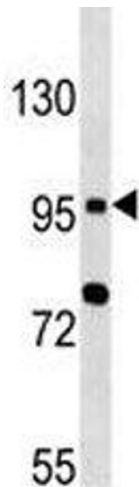
Storage: -20 °C

Storage Comment: Aliquot the TLR6 antibody and store frozen at -20°C or colder. Avoid repeated freeze-thaw cycles.



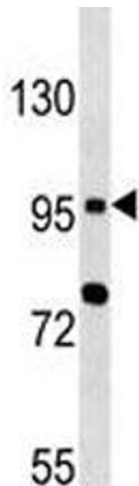
Immunohistochemistry

Image 1. IHC analysis of FFPE human hepatocarcinoma tissue stained with the TLR6 antibody



Western Blotting

Image 2. TLR6 antibody western blot analysis in MCF-7 lysate



Western Blotting

Image 3. TLR6 antibody western blot analysis in MCF-7 lysate