



[Go to Product page](#)

Datasheet for ABIN3029176
anti-TLR6 antibody (AA 722-753)

5 Images

Overview

Quantity:	0.4 mL
Target:	TLR6
Binding Specificity:	AA 722-753
Reactivity:	Human, Mouse
Host:	Rabbit
Clonality:	Polyclonal
Conjugate:	This TLR6 antibody is un-conjugated
Application:	Western Blotting (WB), ELISA, Immunohistochemistry (IHC)

Product Details

Immunogen:	A portion of amino acids 722-753 from the mouse protein was used as the immunogen for this TLR6 antibody.
Isotype:	Ig Fraction
Purification:	Purified

Target Details

Target:	TLR6
Alternative Name:	TLR6 (TLR6 Products)
Background:	TLR6, a Type I membrane protein that belongs to the Toll-like receptor family, participates in the innate immune response to Gram-positive bacteria and fungi. It acts via MyD88 and TRAF6, leading to NF-kappa-B activation, cytokine secretion and the inflammatory response. The

Target Details

protein recognizes mycoplasmal macrophage-activating lipopeptide-2kD (MALP-2), soluble tuberculosis factor (STF), phenol-soluble modulin (PSM) and B.burgdorferi outer surface protein A lipoprotein (OspA-L) cooperatively with TLR2. It binds to TLR2 via their respective extracellular domains, and to MyD88 via their respective TIR domains. TLR6 is detected in monocytes, CD11c+ immature dendritic cells, plasmacytoid pre-dendritic cells and dermal microvessel endothelial cells.

UniProt: [Q9EPW9](#)

Pathways: [TLR Signaling](#), [Activation of Innate immune Response](#), [Cellular Response to Molecule of Bacterial Origin](#), [Toll-Like Receptors Cascades](#)

Application Details

Application Notes: Titration of the TLR6 antibody may be required due to differences in protocols and secondary/substrate sensitivity.\. Western blot: 1:1000,IHC (Paraffin): 1:50-1:100

Restrictions: For Research Use only

Handling

Format: Liquid

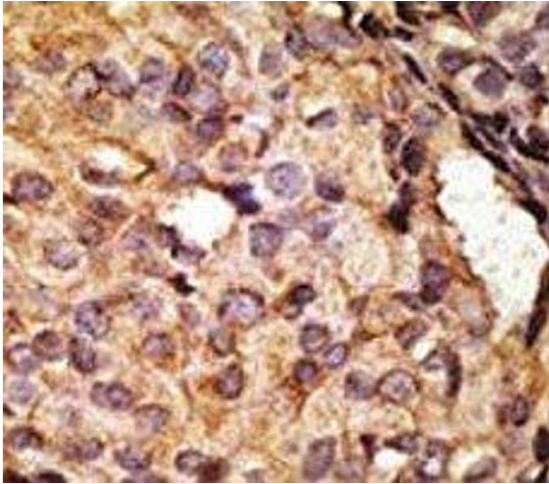
Buffer: In 1X PBS pH 7.4 with 0.09 % sodium azide

Preservative: Sodium azide

Precaution of Use: This product contains Sodium azide: a POISONOUS AND HAZARDOUS SUBSTANCE which should be handled by trained staff only.

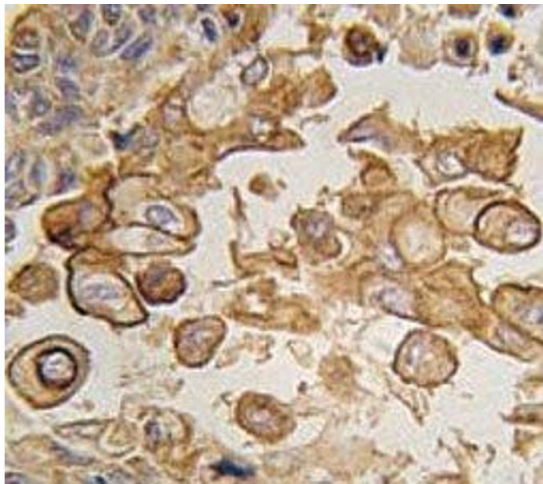
Storage: -20 °C

Storage Comment: Aliquot the TLR6 antibody and store frozen at -20°C or colder. Avoid repeated freeze-thaw cycles.



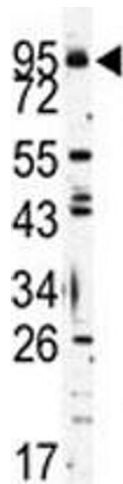
Immunohistochemistry

Image 1. IHC analysis of FFPE human breast carcinoma tissue stained with the TLR6 antibody



Immunohistochemistry

Image 2. IHC analysis of FFPE human lung carcinoma tissue stained with TLR6 antibody



Western Blotting

Image 3. Western blot analysis of TLR6 antibody and K562 lysate

Please check the [product details page](#) for more images. Overall 5 images are available for ABIN3029176.