



[Go to Product page](#)

Datasheet for ABIN3029179
anti-TLR7 antibody (AA 98-128)

3 Images

Overview

Quantity:	0.4 mL
Target:	TLR7
Binding Specificity:	AA 98-128
Reactivity:	Human, Mouse
Host:	Rabbit
Clonality:	Polyclonal
Conjugate:	This TLR7 antibody is un-conjugated
Application:	Western Blotting (WB), ELISA, Immunohistochemistry (IHC)

Product Details

Immunogen:	A portion of amino acids 98-128 from the human protein was used as the immunogen for this anti-TLR7 antibody.
Isotype:	Ig Fraction
Purification:	Purified

Target Details

Target:	TLR7
Alternative Name:	TLR7 (TLR7 Products)
Background:	Toll like receptor 7 is a key component of innate and adaptive immunity. TLRs (Toll-like receptors) control host immune response against pathogens through recognition of molecular patterns specific to microorganisms. TLR7 is a nucleotide-sensing TLR which is activated by

Target Details

single-stranded RNA. Acts via MYD88 and TRAF6, leading to NF-kappa-B activation, cytokine secretion and the inflammatory response (By similarity). [UniProt]

UniProt: [Q9NYK1](#)

Pathways: [TLR Signaling](#), [Activation of Innate immune Response](#), [Toll-Like Receptors Cascades](#)

Application Details

Application Notes: Titration of the anti-TLR7 antibody may be required due to differences in protocols and secondary/substrate sensitivity.\. Western blot: 1:1000,IHC (Paraffin): 1:50-1:100

Restrictions: For Research Use only

Handling

Format: Liquid

Buffer: In 1X PBS pH 7.4 with 0.09 % sodium azide

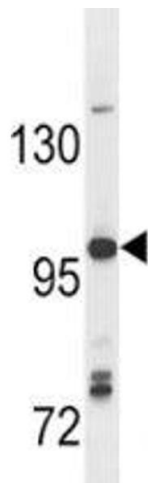
Preservative: Sodium azide

Precaution of Use: This product contains Sodium azide: a POISONOUS AND HAZARDOUS SUBSTANCE which should be handled by trained staff only.

Storage: -20 °C

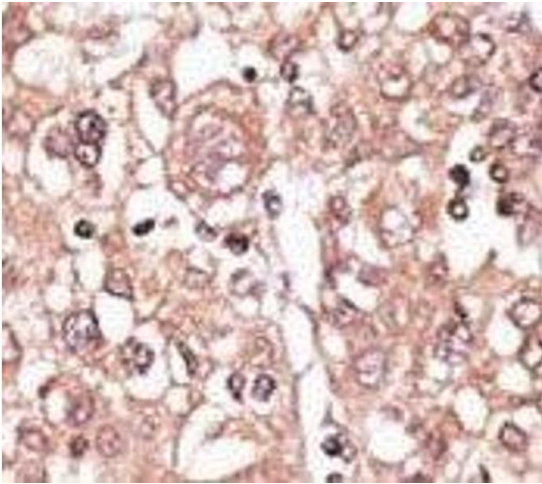
Storage Comment: Aliquot the anti-TLR7 antibody and store frozen at -20°C or colder. Avoid repeated freeze-thaw cycles.

Images



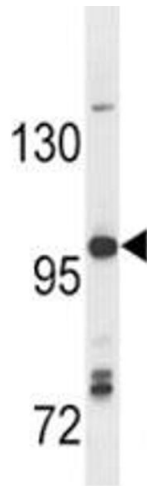
Western Blotting

Image 1. Anti-TLR7 antibody western blot analysis in Ramos lysate



Immunohistochemistry

Image 2. IHC analysis of FFPE human hepatocarcinoma tissue stained with the anti-TLR7 antibody



Western Blotting

Image 3. Anti-TLR7 antibody western blot analysis in Ramos lysate