



[Go to Product page](#)

Datasheet for ABIN3029180
anti-TLR8 antibody (AA 434-463)

3 Images

Overview

Quantity:	0.4 mL
Target:	TLR8
Binding Specificity:	AA 434-463
Reactivity:	Human
Host:	Rabbit
Clonality:	Polyclonal
Conjugate:	This TLR8 antibody is un-conjugated
Application:	Western Blotting (WB), Immunohistochemistry (IHC), ELISA

Product Details

Immunogen:	A portion of amino acids 434-463 from the human protein was used as the immunogen for this anti-TLR8 antibody.
Isotype:	Ig Fraction
Purification:	Antigen affinity purified

Target Details

Target:	TLR8
Alternative Name:	TLR8 (TLR8 Products)
Background:	The protein encoded by this gene is a member of the Toll-like receptor (TLR) family which plays a fundamental role in pathogen recognition and activation of innate immunity. TLRs are highly conserved from Drosophila to humans and share structural and functional similarities. They

Target Details

recognize pathogen-associated molecular patterns (PAMPs) that are expressed on infectious agents, and mediate the production of cytokines necessary for the development of effective immunity. The various TLRs exhibit different patterns of expression. This gene is predominantly expressed in lung and peripheral blood leukocytes, and lies in close proximity to another family member, TLR7, on chromosome X.

UniProt: [Q9NR97](#)

Pathways: [TLR Signaling](#), [Activation of Innate immune Response](#), [Toll-Like Receptors Cascades](#)

Application Details

Application Notes: Titration of the anti-TLR8 antibody may be required due to differences in protocols and secondary/substrate sensitivity.\. Western blot: 1:1000,IHC (Paraffin): 1:10-1:50

Restrictions: For Research Use only

Handling

Format: Liquid

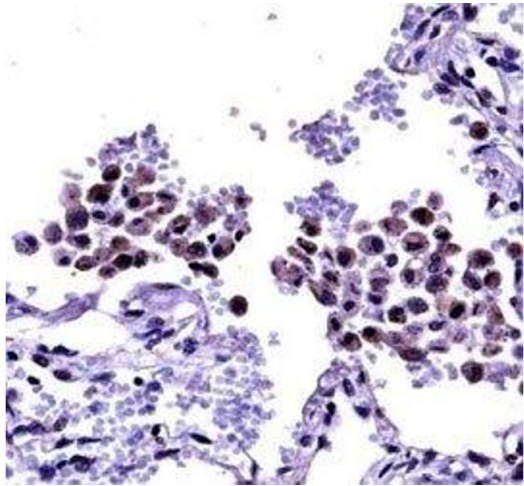
Buffer: In 1X PBS pH 7.4 with 0.09 % sodium azide

Preservative: Sodium azide

Precaution of Use: This product contains Sodium azide: a POISONOUS AND HAZARDOUS SUBSTANCE which should be handled by trained staff only.

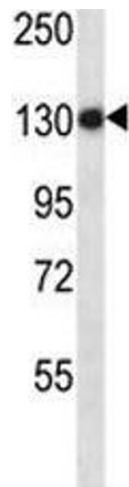
Storage: -20 °C

Storage Comment: Aliquot the anti-TLR8 antibody and store frozen at -20°C or colder. Avoid repeated freeze-thaw cycles.



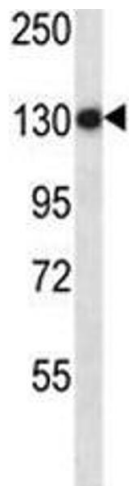
Immunohistochemistry

Image 1. Anti-TLR8 antibody immunohistochemistry analysis in formalin fixed and paraffin embedded human lung tissue



Western Blotting

Image 2. Anti-TLR8 antibody western blot analysis in NCI-H460 lysate



Western Blotting

Image 3. Anti-TLR8 antibody western blot analysis in NCI-H460 lysate