

Datasheet for ABIN3029182
anti-TLR8 antibody (C-Term)



[Go to Product page](#)

2 Images

Overview

Quantity:	100 µg
Target:	TLR8
Binding Specificity:	C-Term
Reactivity:	Mouse, Rat
Host:	Rabbit
Clonality:	Polyclonal
Conjugate:	This TLR8 antibody is un-conjugated
Application:	Western Blotting (WB)

Product Details

Immunogen:	An amino acid sequence from the C-terminus of the rat protein (ENDSRYDNLYIDSIRQY) was used as the immunogen for this TLR8 antibody.
Isotype:	Ig Fraction
Purification:	Antigen affinity

Target Details

Target:	TLR8
Alternative Name:	TLR8 (TLR8 Products)
Background:	Toll-like receptor 8 is a protein that in humans is encoded by the TLR8 gene. It has also been designated as CD288 (cluster of differentiation 288). The protein encoded by this gene is a member of the Toll-like receptor (TLR) family which plays a fundamental role in pathogen

Target Details

recognition and activation of innate immunity. TLRs are highly conserved from *Drosophila* to humans and share structural and functional similarities. They recognize pathogen-associated molecular patterns (PAMPs) that are expressed on infectious agents, and mediate the production of cytokines necessary for the development of effective immunity. The various TLRs exhibit different patterns of expression. This gene is predominantly expressed in lung and peripheral blood leukocytes, and lies in close proximity to another family member, TLR7, on chromosome X. TLR8 recognises G-rich oligonucleotides.

UniProt: [A5H300](#)

Pathways: [TLR Signaling](#), [Activation of Innate immune Response](#), [Toll-Like Receptors Cascades](#)

Application Details

Application Notes: The stated application concentrations are suggested starting points. Titration of the TLR8 antibody may be required due to differences in protocols and secondary/substrate sensitivity.\.
Western blot: 0.5-1 µg/mL

Restrictions: For Research Use only

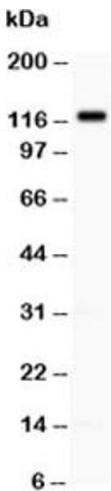
Handling

Buffer: 0.5 mg/mL if reconstituted with 0.2 mL sterile DI water

Storage: -20 °C

Storage Comment: After reconstitution, the TLR8 antibody can be stored for up to one month at 4°C. For long-term, aliquot and store at -20°C. Avoid repeated freezing and thawing.

Images



Western Blotting

Image 1. Western blot testing of TLR8 antibody at 0.5ug/ml and U87 lysate



Western Blotting

Image 2. Western blot testing of TLR8 antibody at 0.5ug/ml and U87 lysate