

Datasheet for ABIN3029188  
**anti-TOR2A antibody (AA 194-221)**

## 3 Images

[Go to Product page](#)

## Overview

Quantity:	0.4 mL
Target:	TOR2A
Binding Specificity:	AA 194-221
Reactivity:	Human
Host:	Rabbit
Clonality:	Polyclonal
Conjugate:	This TOR2A antibody is un-conjugated
Application:	Western Blotting (WB), Immunohistochemistry (IHC), ELISA

## Product Details

Immunogen:	A portion of amino acids 194-221 from the human protein was used as the immunogen for this TOR2A antibody.
Isotype:	Ig Fraction
Cross-Reactivity (Details):	Expected species reactivity: Rat
Purification:	Antigen affinity purified

## Target Details

Target:	TOR2A
Alternative Name:	TOR2A ( <a href="#">TOR2A Products</a> )
Background:	Salusins are multifunctional bioactive peptides discovered by bioinformatics analyses of a full-

## Target Details

length cDNA library. Salusin alpha and salusin beta are related peptides of 28 and 20 amino acids that were recently characterized. These peptides are considered to be biosynthesized from preprosalusin, an alternative-splicing product of the torsion dystonia-related gene (TOR2A), after frameshift reading and digestion at dibasic amino acids. Salusin alpha has recently been shown to be involved in atherosclerosis, it potently suppresses acyl-CoA:cholesterol acyltransferase-1 which stores cholesterol ester converted from free cholesterol in macrophages, thereby reducing human macrophage foam cell formation.

UniProt: [Q5JU69](#)

## Application Details

Application Notes: Titration of the TOR2A antibody may be required due to differences in protocols and secondary/substrate sensitivity.\. Western blot: 1:1000,IHC (Paraffin): 1:10-1:50

Restrictions: For Research Use only

## Handling

Format: Liquid

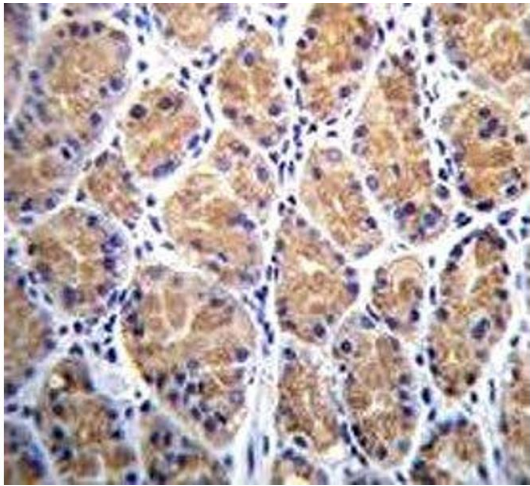
Buffer: In 1X PBS pH 7.4 with 0.09 % sodium azide

Preservative: Sodium azide

Precaution of Use: This product contains Sodium azide: a POISONOUS AND HAZARDOUS SUBSTANCE which should be handled by trained staff only.

Storage: -20 °C

Storage Comment: Aliquot the TOR2A antibody and store frozen at -20°C or colder. Avoid repeated freeze-thaw cycles.



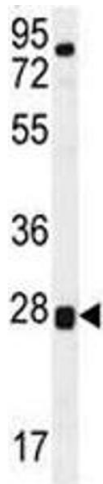
**Immunohistochemistry**

**Image 1.** TOR2A antibody immunohistochemistry analysis in formalin fixed and paraffin embedded human stomach tissue.



**Western Blotting**

**Image 2.** TOR2A antibody western blot analysis in human placenta tissue lysate.



**Western Blotting**

**Image 3.** TOR2A antibody western blot analysis in human placenta tissue lysate.