

Datasheet for ABIN3029196  
**anti-TFAM antibody (AA 216-246)**

## 5 Images

[Go to Product page](#)

## Overview

Quantity:	0.4 mL
Target:	TFAM
Binding Specificity:	AA 216-246
Reactivity:	Human
Host:	Rabbit
Clonality:	Polyclonal
Conjugate:	This TFAM antibody is un-conjugated
Application:	Western Blotting (WB), Immunohistochemistry (IHC), ELISA, Immunofluorescence (IF), Flow Cytometry (FACS)

## Product Details

Immunogen:	A portion of amino acids 216-246 from the human protein was used as the immunogen for this TFAM antibody.
Isotype:	Ig Fraction
Purification:	Antigen affinity purified

## Target Details

Target:	TFAM
Alternative Name:	TFAM ( <a href="#">TFAM Products</a> )
Background:	This gene encodes a mitochondrial transcription factor that is a key activator of mitochondrial transcription as well as a participant in mitochondrial genome replication. Studies in mice have

## Target Details

demonstrated that this gene product is required to regulate the mitochondrial genome copy number and is essential for embryonic development. A mouse model for Kearns-Sayre syndrome was produced when expression of this gene was eliminated by targeted disruption in heart and muscle cells.

UniProt: [Q00059](#)

Pathways: [Chromatin Binding](#)

## Application Details

Application Notes: Titration of the TFAM antibody may be required due to differences in protocols and secondary/substrate sensitivity.\. IHC (Paraffin): 1:50-1:100,Flow Cytometry: 1:10-1:50,Immunofluorescence: 1:10-1:50,Western blot: 1:1000

Restrictions: For Research Use only

## Handling

Format: Liquid

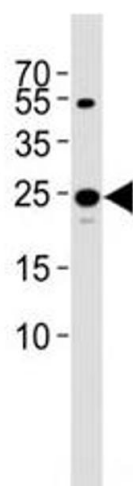
Buffer: In 1X PBS, pH 7.4, with 0.09 % sodium azide

Preservative: Sodium azide

Precaution of Use: This product contains Sodium azide: a POISONOUS AND HAZARDOUS SUBSTANCE which should be handled by trained staff only.

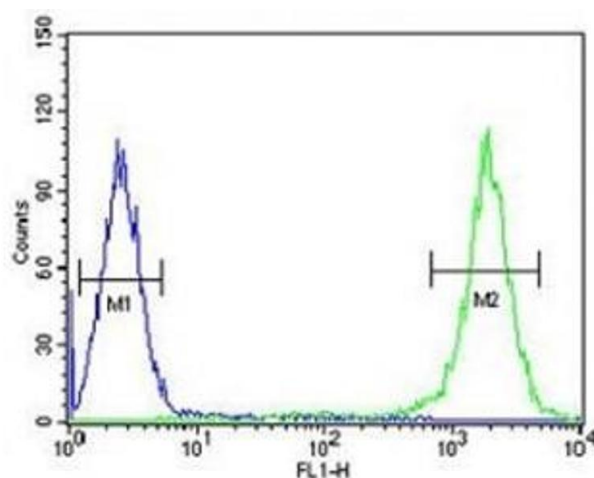
Storage: -20 °C

Storage Comment: Aliquot the TFAM antibody and store frozen at -20°C or colder. Avoid repeated freeze-thaw cycles.



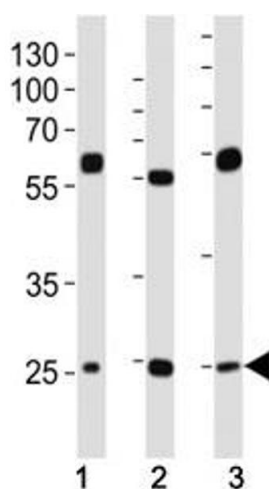
### Western Blotting

**Image 1.** Western blot analysis of lysate from 293T cell line using TFAM antibody diluted at 1:1000. Expected molecular weight: 24~29 kDa.



### Flow Cytometry

**Image 2.** TFAM antibody flow cytometric analysis of K562 cells (right histogram) compared to a negative control (left histogram). FITC-conjugated goat-anti-rabbit secondary Ab was used for the analysis.



### Western Blotting

**Image 3.** Western blot analysis of lysate from (1) HeLa, (2) HepG2 and (3) U-2OS cell line using TFAM antibody at 1:1000. Expected molecular weight: 24~29 kDa.

Please check the [product details page](#) for more images. Overall 5 images are available for ABIN3029196.