



Datasheet for ABIN3029203
anti-NKX2-1 antibody (AA 2-1)



[Go to Product page](#)

3 Images

Overview

Quantity:	0.4 mL
Target:	NKX2-1
Binding Specificity:	AA 2-1
Reactivity:	Human
Host:	Rabbit
Clonality:	Polyclonal
Conjugate:	This NKX2-1 antibody is un-conjugated
Application:	Western Blotting (WB), Flow Cytometry (FACS), ELISA

Product Details

Immunogen:	A portion of amino acids 2-1 from the human protein was used as the immunogen for this TTF1 antibody.
Isotype:	Ig Fraction
Cross-Reactivity (Details):	Expected species reactivity: Mouse, Rat
Purification:	Antigen affinity purified

Target Details

Target:	NKX2-1
Alternative Name:	NKX2.1 (TTF1) (NKX2-1 Products)
Background:	This gene encodes a protein initially identified as a thyroid-specific transcription factor.

Target Details

NKX2.1/TTF1 binds to thyroglobulin promoter and regulates the expression of thyroid-specific genes but has also been shown to regulate the expression of genes involved in morphogenesis. Mutations and deletions in this gene are associated with benign hereditary chorea, choreoathetosis, congenital hypothyroidism, and neonatal respiratory distress, and may be associated with thyroid cancer. Multiple transcript variants encoding different isoforms have been found for this gene.

UniProt: [P43699](#)

Pathways: [Intracellular Steroid Hormone Receptor Signaling Pathway](#), [Regulation of Systemic Arterial Blood Pressure by Hormones](#), [Cellular Glucan Metabolic Process](#), [Feeding Behaviour](#)

Application Details

Application Notes: Titration of the TTF1 antibody may be required due to differences in protocols and secondary/substrate sensitivity.\. Western blot: 1:1000,Flow Cytometry: 1:10-1:50

Restrictions: For Research Use only

Handling

Format: Liquid

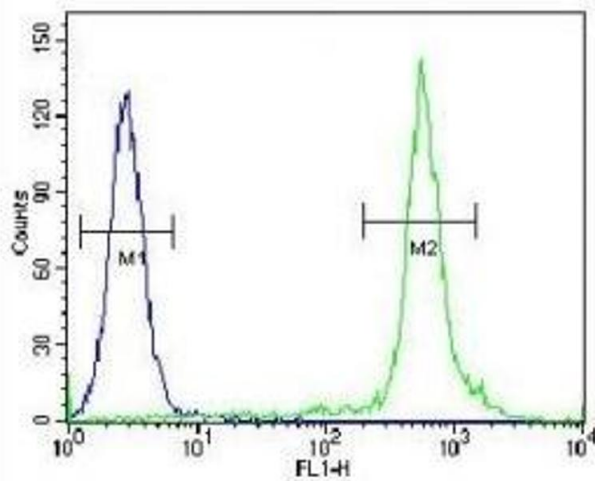
Buffer: In 1X PBS, pH 7.4, with 0.09 % sodium azide

Preservative: Sodium azide

Precaution of Use: This product contains Sodium azide: a POISONOUS AND HAZARDOUS SUBSTANCE which should be handled by trained staff only.

Storage: -20 °C

Storage Comment: Aliquot the TTF1 antibody and store frozen at -20°C or colder. Avoid repeated freeze-thaw cycles.



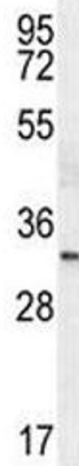
Flow Cytometry

Image 1. TTF1 antibody flow cytometric analysis of HeLa cells (green) compared to a negative control (blue). FITC-conjugated goat-anti-rabbit secondary Ab was used for the analysis.



Western Blotting

Image 2. TTF1 antibody western blot analysis in HeLa lysate.



Western Blotting

Image 3. TTF1 antibody western blot analysis in HeLa lysate.