

Datasheet for ABIN3029204  
**anti-TLE1 antibody (N-Term)**

## 3 Images

[Go to Product page](#)

## Overview

Quantity:	0.4 mL
Target:	TLE1
Binding Specificity:	N-Term
Reactivity:	Human
Host:	Rabbit
Clonality:	Polyclonal
Conjugate:	This TLE1 antibody is un-conjugated
Application:	Western Blotting (WB), ELISA, Immunofluorescence (IF)

## Product Details

Immunogen:	This TLE1 antibody was produced from a rabbit immunized with a KLH conjugated synthetic peptide between 187-221 amino acids from the N-terminal region of human TLE1.
Isotype:	Ig Fraction
Purification:	Antigen affinity purified

## Target Details

Target:	TLE1
Alternative Name:	TLE1 ( <a href="#">TLE1 Products</a> )
Background:	Transcriptional corepressor that binds to a number of transcription factors. Inhibits NF-kappa-B-regulated gene expression. Inhibits the transcriptional activation mediated by FOXA2, and by CTNNB1 and TCF family members in Wnt signaling. The effects of full-length TLE family

## Target Details

members may be modulated by association with dominant-negative AES. Unusual function as coactivator for ESRRG.

UniProt: [Q04724](#)

Pathways: [WNT Signaling](#), [SARS-CoV-2 Protein Interactome](#)

## Application Details

Application Notes: Titration of the TLE1 antibody may be required due to differences in protocols and secondary/substrate sensitivity.\. Immunofluorescence: 1:25,Western blot: 1:1000

Restrictions: For Research Use only

## Handling

Format: Liquid

Buffer: In 1X PBS, pH 7.4, with 0.09 % sodium azide

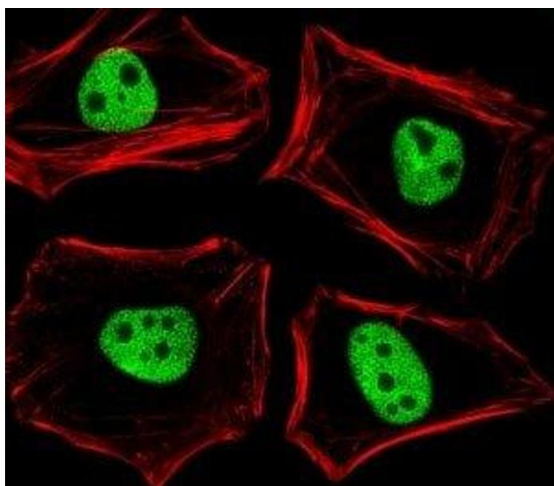
Preservative: Sodium azide

Precaution of Use: This product contains Sodium azide: a POISONOUS AND HAZARDOUS SUBSTANCE which should be handled by trained staff only.

Storage: -20 °C

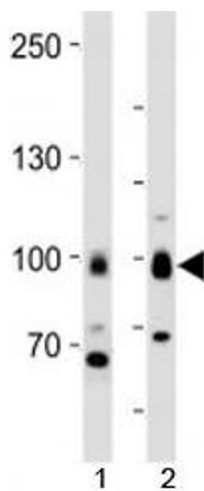
Storage Comment: Aliquot the TLE1 antibody and store frozen at -20°C or colder. Avoid repeated freeze-thaw cycles.

## Images



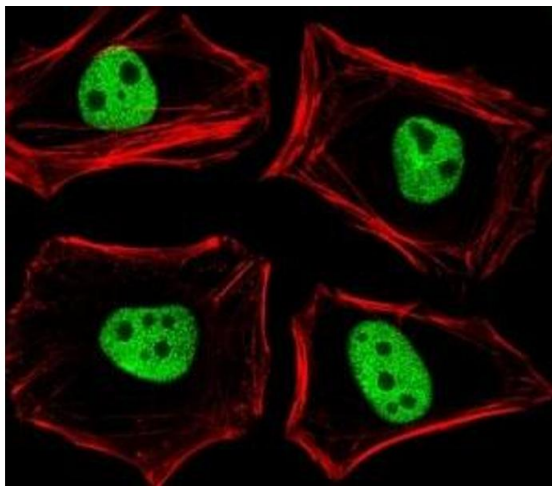
### Immunofluorescence

**Image 1.** Fluorescent image of HeLa cells stained with TLE1 antibody diluted at 1:25 dilution. An Alexa Fluor 488-conjugated goat anti-rabbit IgG was used as the secondary Ab (green). Cytoplasmic actin was counterstained with Alexa Fluor 555 conjugated with Phalloidin



#### Western Blotting

**Image 2.** Western blot analysis of lysate from 1) MCF-7 cells and 2) human brain tissue using TLE1 antibody at 1:1000.



#### Immunofluorescence

**Image 3.** Fluorescent image of HeLa cells stained with TLE1 antibody diluted at 1:25 dilution. An Alexa Fluor 488-conjugated goat anti-rabbit IgG was used as the secondary Ab (green). Cytoplasmic actin was counterstained with Alexa Fluor 555 conjugated with Phalloidin (red).