

Datasheet for ABIN3029207  
**anti-TLE2 antibody (AA 637-665)**



[Go to Product page](#)

1 Image

## Overview

Quantity:	0.4 mL
Target:	TLE2
Binding Specificity:	AA 637-665
Reactivity:	Human, Mouse
Host:	Rabbit
Clonality:	Polyclonal
Conjugate:	This TLE2 antibody is un-conjugated
Application:	Western Blotting (WB), ELISA

## Product Details

Immunogen:	A portion of amino acids 637-665 from the human protein was used as the immunogen for this TLE2 antibody.
Isotype:	Ig Fraction
Purification:	Antigen affinity purified

## Target Details

Target:	TLE2
Alternative Name:	TLE2 ( <a href="#">TLE2 Products</a> )
Background:	TLE2 is a transcriptional corepressor that binds to a number of transcription factors. Inhibits the transcriptional activation mediated by CTNNB1 and TCF family members in Wnt signaling. The effects of full-length TLE family members may be modulated by association with

Target Details

	dominant-negative AES (By similarity).
UniProt:	<a href="#">Q04725</a>
Pathways:	<a href="#">WNT Signaling</a>

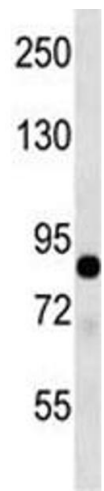
Application Details

Application Notes:	Titration of the TLE2 antibody may be required due to differences in protocols and secondary/substrate sensitivity.\. Western blot: 1:1000
Restrictions:	For Research Use only

Handling

Format:	Liquid
Buffer:	In 1X PBS, pH 7.4, with 0.09 % sodium azide
Preservative:	Sodium azide
Precaution of Use:	This product contains Sodium azide: a POISONOUS AND HAZARDOUS SUBSTANCE which should be handled by trained staff only.
Storage:	-20 °C
Storage Comment:	Aliquot the TLE2 antibody and store frozen at -20°C or colder. Avoid repeated freeze-thaw cycles.

Images



**Western Blotting**

**Image 1.** TLE2 antibody western blot analysis in mouse lung tissue lysate.