

Datasheet for ABIN3029211
anti-TLE6 antibody (AA 30-58)[Go to Product page](#)

1 Image

Overview

Quantity:	0.4 mL
Target:	TLE6
Binding Specificity:	AA 30-58
Reactivity:	Human
Host:	Rabbit
Clonality:	Polyclonal
Conjugate:	This TLE6 antibody is un-conjugated
Application:	Western Blotting (WB), Immunohistochemistry (IHC), ELISA

Product Details

Immunogen:	A portion of amino acids 30-58 from the human protein was used as the immunogen for this TLE6 antibody.
Isotype:	Ig Fraction
Purification:	Antigen affinity purified

Target Details

Target:	TLE6
Alternative Name:	TLE6 (TLE6 Products)
Background:	As a member of the subcortical maternal complex (SCMC), plays an essential role for zygotes to progress beyond the first embryonic cell divisions (By similarity).

Target Details

UniProt:	Q9H808
Pathways:	WNT Signaling

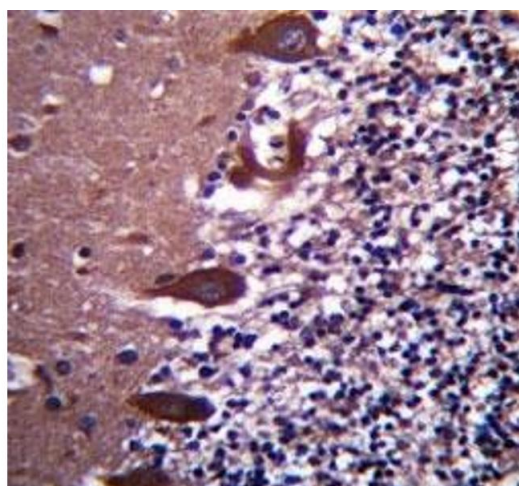
Application Details

Application Notes:	Titration of the TLE6 antibody may be required due to differences in protocols and secondary/substrate sensitivity.\. Western blot: 1:1000,IHC (Paraffin): 1:10-1:50
Restrictions:	For Research Use only

Handling

Format:	Liquid
Buffer:	In 1X PBS, pH 7.4, with 0.09 % sodium azide
Preservative:	Sodium azide
Precaution of Use:	This product contains Sodium azide: a POISONOUS AND HAZARDOUS SUBSTANCE which should be handled by trained staff only.
Storage:	-20 °C
Storage Comment:	Aliquot the TLE6 antibody and store frozen at -20°C or colder. Avoid repeated freeze-thaw cycles.

Images



Immunohistochemistry

Image 1. TLE6 antibody immunohistochemistry analysis in formalin fixed and paraffin embedded human cerebellum tissue.