

Datasheet for ABIN3029221

**anti-TGFB2 antibody**

## 6 Images

[Go to Product page](#)

## Overview

Quantity:	0.4 mL
Target:	TGFB2
Reactivity:	Human
Host:	Mouse
Clonality:	Monoclonal
Application:	Western Blotting (WB), ELISA, Immunohistochemistry (IHC), Immunofluorescence (IF)

## Product Details

Immunogen:	This TGFB2 antibody was produced from a mouse immunized with TGFB2 recombinant protein.
Clone:	220ct16-4-3-1
Isotype:	IgG1 kappa
Purification:	Purified

## Target Details

Target:	TGFB2
Alternative Name:	TGFB2 ( <a href="#">TGFB2 Products</a> )
Background:	This gene encodes a member of the transforming growth factor beta (TGFB) family of cytokines, which are multifunctional peptides that regulate proliferation, differentiation, adhesion, migration, and other functions in many cell types by transducing their signal through combinations of transmembrane type I and type II receptors (TGFB1 and TGFB2) and their

## Target Details

downstream effectors, the SMAD proteins. Disruption of the TGFB/SMAD pathway has been implicated in a variety of human cancers. The encoded protein is secreted and has suppressive effects of interleukin-2 dependent T-cell growth. Translocation t(1,7)(q41,p21) between this gene and HDAC9 is associated with Peters' anomaly, a congenital defect of the anterior chamber of the eye. The knockout mice lacking this gene show perinatal mortality and a wide range of developmental, including cardiac, defects. Alternatively spliced transcript variants encoding different isoforms have been identified.

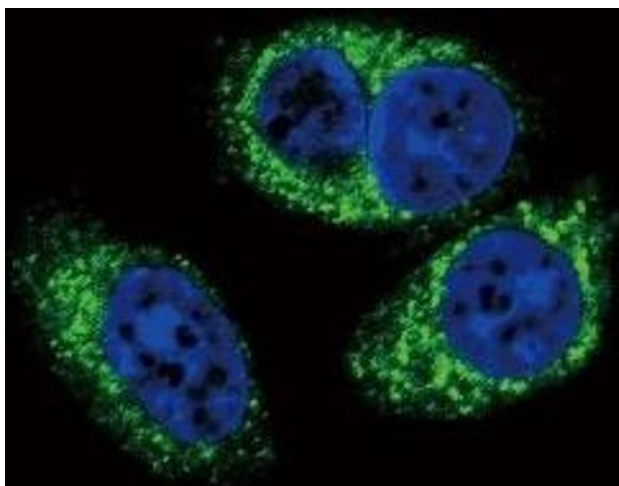
UniProt:	<a href="#">P61812</a>
Pathways:	<a href="#">Cell-Cell Junction Organization</a> , <a href="#">Production of Molecular Mediator of Immune Response</a> , <a href="#">Protein targeting to Nucleus</a>

## Application Details

Application Notes:	Titration of the TGFB2 antibody may be required due to differences in protocols and secondary/substrate sensitivity.\. IHC (Paraffin): 1:10-1:50,Immunofluorescence: 1:10-1:50,Western blot: 1:100-1:1000
Restrictions:	For Research Use only

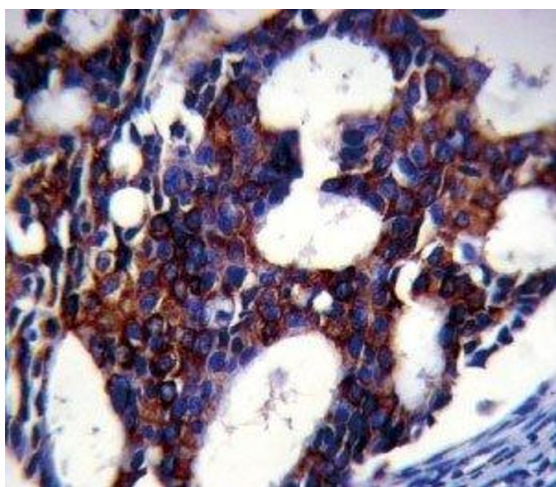
## Handling

Format:	Liquid
Buffer:	In 1X PBS, pH 7.4, with 0.09 % sodium azide
Preservative:	Sodium azide
Precaution of Use:	This product contains Sodium azide: a POISONOUS AND HAZARDOUS SUBSTANCE which should be handled by trained staff only.
Storage:	-20 °C
Storage Comment:	Aliquot the TGFB2 antibody and store frozen at -20°C or colder. Avoid repeated freeze-thaw cycles.



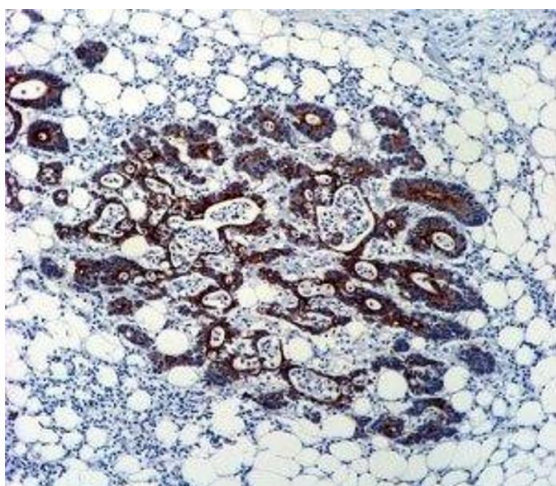
#### Immunofluorescence

**Image 1.** Confocal immunofluorescent analysis of TGFB2 antibody with A549 cells followed by Alexa Fluor 488-conjugated goat anti-rabbit IgG (green). DAPI was used as a nuclear counterstain (blue).



#### Immunohistochemistry

**Image 2.** TGFB2 antibody analysis in formalin fixed and paraffin embedded human breast carcinoma.



#### Immunohistochemistry

**Image 3.** TGFB2 antibody immunohistochemistry analysis in formalin fixed and paraffin embedded human colon carcinoma

Please check the [product details page](#) for more images. Overall 6 images are available for ABIN3029221.