

Datasheet for ABIN3029227
anti-TGFBI antibody (AA 106-135)

3 Images

[Go to Product page](#)

Overview

Quantity:	0.4 mL
Target:	TGFBI
Binding Specificity:	AA 106-135
Reactivity:	Human
Host:	Rabbit
Clonality:	Polyclonal
Conjugate:	This TGFBI antibody is un-conjugated
Application:	Western Blotting (WB), ELISA, Flow Cytometry (FACS)

Product Details

Immunogen:	A portion of amino acids 106-135 from the human protein was used as the immunogen for this TGFBI antibody.
Isotype:	Ig Fraction
Cross-Reactivity (Details):	Expected species reactivity: Mouse, Pig, Rabbit
Purification:	Antigen affinity purified

Target Details

Target:	TGFBI
Alternative Name:	TGFBI (TGFBI Products)
Background:	Transforming growth factor-beta-induced protein ig-h3 is a RGD-containing protein that binds

Target Details

to type I, II and IV collagens. The RGD motif is found in many extracellular matrix proteins modulating cell adhesion and serves as a ligand recognition sequence for several integrins. This protein plays a role in cell-collagen interactions and may be involved in endochondrial bone formation in cartilage. The protein is induced by transforming growth factor-beta and acts to inhibit cell adhesion. Mutations in this gene are associated with multiple types of corneal dystrophy.

UniProt: [Q15582](#)

Application Details

Application Notes: Titration of the TGFBI antibody may be required due to differences in protocols and secondary/substrate sensitivity.\. Western blot: 1:1000,Flow Cytometry: 1:10-1:50

Restrictions: For Research Use only

Handling

Format: Liquid

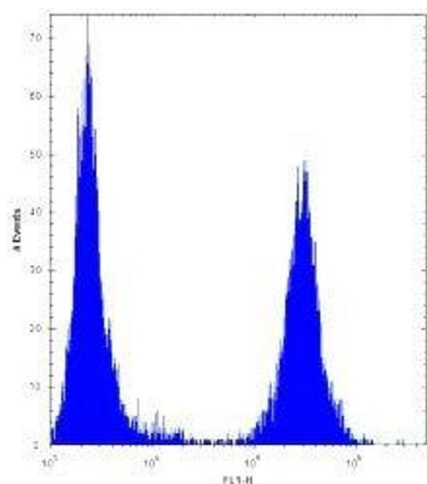
Buffer: In 1X PBS, pH 7.4, with 0.09 % sodium azide

Preservative: Sodium azide

Precaution of Use: This product contains Sodium azide: a POISONOUS AND HAZARDOUS SUBSTANCE which should be handled by trained staff only.

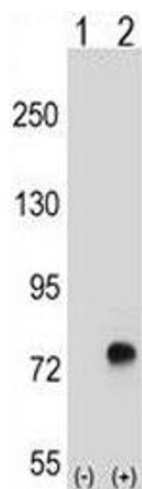
Storage: -20 °C

Storage Comment: Aliquot the TGFBI antibody and store frozen at -20°C or colder. Avoid repeated freeze-thaw cycles.



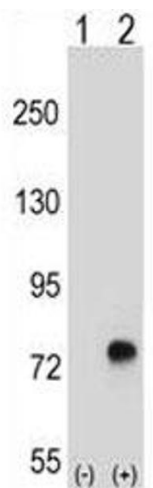
Flow Cytometry

Image 1. TGFBI antibody flow cytometric analysis of U251 cells (right histogram) compared to a negative control (left histogram). FITC-conjugated goat-anti-rabbit secondary Ab was used for the analysis.



Western Blotting

Image 2. Western blot analysis of TGFBI antibody and 293 cell lysate either nontransfected (Lane 1) or transiently transfected (2) with the TGFBI gene.



Western Blotting

Image 3. Western blot analysis of TGFBI antibody and 293 cell lysate either nontransfected (Lane 1) or transiently transfected (2) with the TGFBI gene.