



[Go to Product page](#)

Datasheet for ABIN3029243

## anti-TRPM8 antibody (AA 1075-1104)

### 3 Images

#### Overview

Quantity:	0.4 mL
Target:	TRPM8
Binding Specificity:	AA 1075-1104
Reactivity:	Human
Host:	Rabbit
Clonality:	Polyclonal
Conjugate:	This TRPM8 antibody is un-conjugated
Application:	Western Blotting (WB), ELISA, Immunohistochemistry (IHC)

#### Product Details

Immunogen:	A portion of amino acids 1075-1104 from the human protein was used as the immunogen for this TRPM8 antibody.
Isotype:	Ig Fraction
Cross-Reactivity (Details):	Expected species reactivity: Rat
Purification:	Purified

#### Target Details

Target:	TRPM8
Alternative Name:	TRPM8 ( <a href="#">TRPM8 Products</a> )
Background:	TRPM8 is a receptor-activated non-selective cation channel involved in detection of sensations

## Target Details

such as coolness, by being activated by cold temperature below 25 degrees Celsius. It is activated by icilin, eucalyptol, menthol, cold and modulation of intracellular pH and involved in menthol sensation. It is permeable for monovalent cations sodium, potassium, and cesium and divalent cation calcium.

UniProt: [Q7Z2W7](#)

## Application Details

Application Notes: Titration of the TRPM8 antibody may be required due to differences in protocols and secondary/substrate sensitivity.\. Western blot: 1:1000,IHC (Paraffin): 1:10-1:50

Restrictions: For Research Use only

## Handling

Format: Liquid

Buffer: In 1X PBS, pH 7.4, with 0.09 % sodium azide

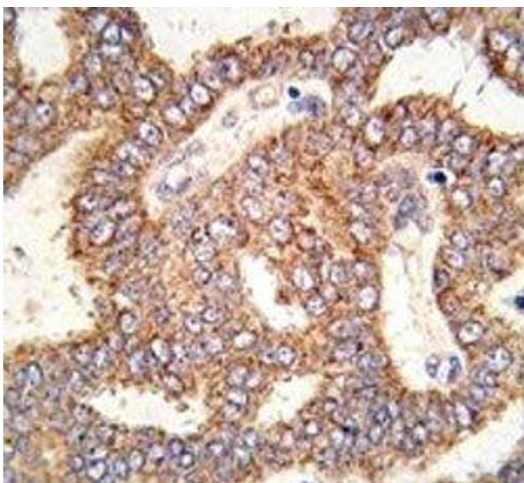
Preservative: Sodium azide

Precaution of Use: This product contains Sodium azide: a POISONOUS AND HAZARDOUS SUBSTANCE which should be handled by trained staff only.

Storage: -20 °C

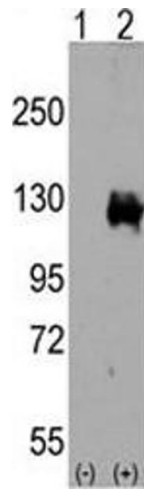
Storage Comment: Aliquot the TRPM8 antibody and store frozen at -20°C or colder. Avoid repeated freeze-thaw cycles.

## Images



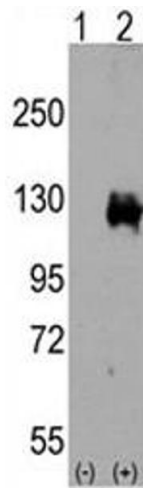
### Immunohistochemistry

**Image 1.** IHC analysis of FFPE human prostate carcinoma tissue stained with TRPM8 antibody



#### Western Blotting

**Image 2.** Western blot analysis of TRPM8 antibody and 293 cell lysate either nontransfected (Lane 1) or transiently transfected with the TRPM8 gene (2). Predicted molecular weight ~128 kDa.



#### Western Blotting

**Image 3.** Western blot analysis of TRPM8 antibody and 293 cell lysate either nontransfected (Lane 1) or transiently transfected with the TRPM8 gene (2). Predicted molecular weight ~128 kDa.