

Datasheet for ABIN3029331
anti-Tuberin antibody (AA 1776-1805)[Go to Product page](#)

5 Images

Overview

Quantity:	0.4 mL
Target:	Tuberin (TSC2)
Binding Specificity:	AA 1776-1805
Reactivity:	Human
Host:	Rabbit
Clonality:	Polyclonal
Conjugate:	This Tuberin antibody is un-conjugated
Application:	ELISA, Western Blotting (WB), Immunohistochemistry (IHC), Immunofluorescence (IF)

Product Details

Immunogen:	A portion of amino acids 1776-1805 from the human protein was used as the immunogen for this Tuberin antibody.
Isotype:	Ig Fraction
Purification:	Antigen affinity purified

Target Details

Target:	Tuberin (TSC2)
Alternative Name:	Tuberin (TSC2 Products)
Background:	Mutations in TSC2 lead to tuberous sclerosis complex. This protein is believed to be a tumor suppressor and is able to specifically stimulate the intrinsic GTPase activity of the Ras-related protein RAP1A and RAB5. TSC2 associates with hamartin in a cytosolic complex, possibly

Target Details

acting as a chaperone for hamartin. It may have a function in vesicular transport, but may also play a role in the regulation of cell growth arrest and in the regulation of transcription mediated by steroid receptors. Interaction between TSC1 and TSC2 may facilitate vesicular docking.

UniProt: [P49815](#)

Pathways: [RTK Signaling](#), [AMPK Signaling](#), [Fc-epsilon Receptor Signaling Pathway](#), [EGFR Signaling Pathway](#), [Neurotrophin Signaling Pathway](#), [Regulation of Cell Size](#), [Tube Formation](#), [Protein targeting to Nucleus](#)

Application Details

Application Notes: Titration of the Tuberin antibody may be required due to differences in protocols and secondary/substrate sensitivity.\. Immunofluorescence: 1:10-1:50, Western blot: 1:1000, IHC (Paraffin): 1:10-1:50

Restrictions: For Research Use only

Handling

Format: Liquid

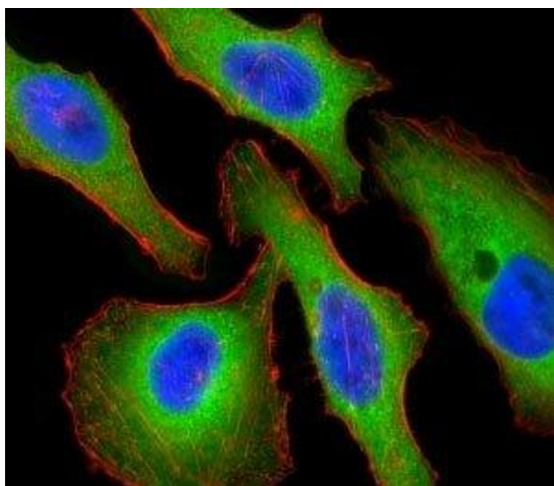
Buffer: In 1X PBS, pH 7.4, with 0.09 % sodium azide

Preservative: Sodium azide

Precaution of Use: This product contains Sodium azide: a POISONOUS AND HAZARDOUS SUBSTANCE which should be handled by trained staff only.

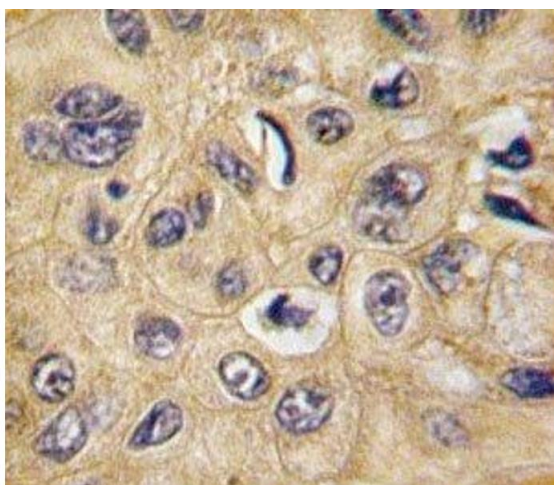
Storage: -20 °C

Storage Comment: Aliquot the Tuberin antibody and store frozen at -20°C or colder. Avoid repeated freeze-thaw cycles.



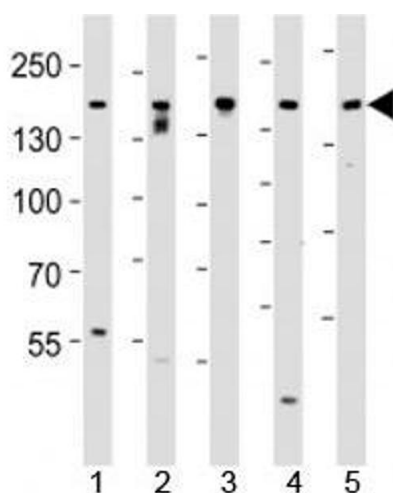
Immunofluorescence

Image 1. Fluorescent confocal image of HeLa cells stained with Tuberin antibody. Alexa Fluor 488 secondary (green) was used. Tuberin/TSC2 immunoreactivity is localized to the cytoplasm.



Immunohistochemistry

Image 2. IHC analysis of FFPE human hepatocarcinoma tissue stained with Tuberin antibody



Western Blotting

Image 3. Western blot analysis of lysate from SH-SY5Y, MCF-7, PC3, LNCaP, HeLa, cell line (left to right) using Tuberin antibody at 1:1000 for each lane.

Please check the [product details page](#) for more images. Overall 5 images are available for ABIN3029331.