



Datasheet for ABIN3029335
anti-TUBA1C antibody (N-Term)



[Go to Product page](#)

3 Images

Overview

Quantity:	0.4 mL
Target:	TUBA1C
Binding Specificity:	N-Term
Reactivity:	Human, Mouse
Host:	Rabbit
Clonality:	Polyclonal
Conjugate:	This TUBA1C antibody is un-conjugated
Application:	Western Blotting (WB), ELISA, Flow Cytometry (FACS)

Product Details

Immunogen:	This TUBA6 antibody was produced from a rabbit immunized with a KLH conjugated synthetic peptide between 26-60 amino acids from the N-terminal region of human TUBA1C/TUBA6.
Isotype:	Ig Fraction
Cross-Reactivity (Details):	Expected species reactivity: Rat, Bovine, Pig, Primate, Chicken, Hamster, Xenopus, Drosophila
Purification:	Antigen affinity purified

Target Details

Target:	TUBA1C
Alternative Name:	TUBA6 (Tubulin alpha 6) (TUBA1C Products)
Background:	Tubulin is the major constituent of microtubules. It binds two moles of GTP, one at an

Target Details

exchangeable site on the beta chain and one at a non-exchangeable site on the alpha chain.

UniProt: [Q9BQE3](#)

Pathways: [Microtubule Dynamics, M Phase](#)

Application Details

Application Notes: Titration of the TUBA6 antibody may be required due to differences in protocols and secondary/substrate sensitivity. \. Flow Cytometry: 1:25,Western blot: 1:1000

Restrictions: For Research Use only

Handling

Format: Liquid

Buffer: In 1X PBS pH 7.4 with 0.09 % sodium azide

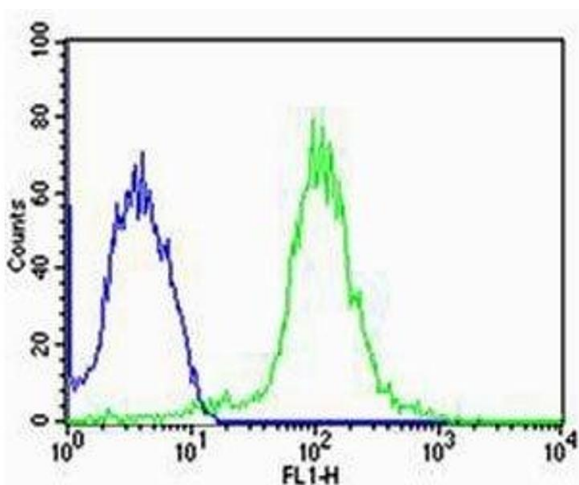
Preservative: Sodium azide

Precaution of Use: This product contains Sodium azide: a POISONOUS AND HAZARDOUS SUBSTANCE which should be handled by trained staff only.

Storage: -20 °C

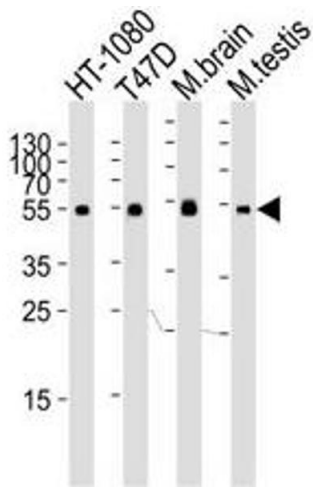
Storage Comment: Aliquot the TUBA6 antibody and store frozen at -20°C or colder. Avoid repeated freeze-thaw cycles.

Images



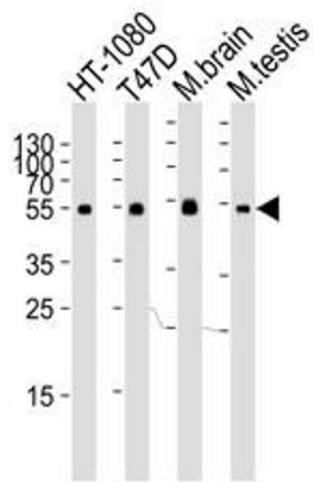
Flow Cytometry

Image 1. Flow cytometric analysis of MCF-7 cells using TUBA6 antibody (green) compared to an isotype control of rabbit IgG (blue); Ab was diluted at 1:25 dilution. An Alexa Fluor 488 goat anti-rabbit IgG was used as the secondary Ab.



Western Blotting

Image 2. Western blot analysis of lysate from HT-1080, T47D cell line, mouse brain and testis tissue lysate using TUBA6 antibody at 1:1000.



Western Blotting

Image 3. Western blot analysis of lysate from HT-1080, T47D cell line, mouse brain and testis tissue lysate using TUBA6 antibody at 1:1000.