



Datasheet for ABIN3029338
anti-TUBB1 antibody



[Go to Product page](#)

5 Images

Overview

Quantity:	0.4 mL
Target:	TUBB1
Reactivity:	Human
Host:	Rabbit
Clonality:	Polyclonal
Conjugate:	This TUBB1 antibody is un-conjugated
Application:	Western Blotting (WB), ELISA, Immunohistochemistry (IHC), Flow Cytometry (FACS)

Product Details

Immunogen:	This anti-beta Tubulin antibody was produced from rabbits immunized with human TUBB1 recombinant protein.
Isotype:	Ig Fraction
Purification:	Antigen affinity purified

Target Details

Target:	TUBB1
Alternative Name:	Tubulin beta 1 (TUBB1) (TUBB1 Products)
Background:	Beta tubulins are one of two core protein families (alpha and beta tubulins) that heterodimerize and assemble to form microtubules. Tubulin beta-1 chain (TUBB1) is specifically expressed in platelets and megakaryocytes and may be involved in proplatelet production and platelet release.

Target Details

UniProt: [Q9H4B7](#)

Pathways: [Microtubule Dynamics](#)

Application Details

Application Notes: Titration of the anti-beta Tubulin antibody may be required due to differences in protocols and secondary/substrate sensitivity.\. Western blot: 1:1000,IHC (Paraffin): 1:50-1:100,Flow Cytometry: 1:10-1:50

Restrictions: For Research Use only

Handling

Format: Liquid

Buffer: In 1X PBS pH 7.4 with 0.09 % sodium azide

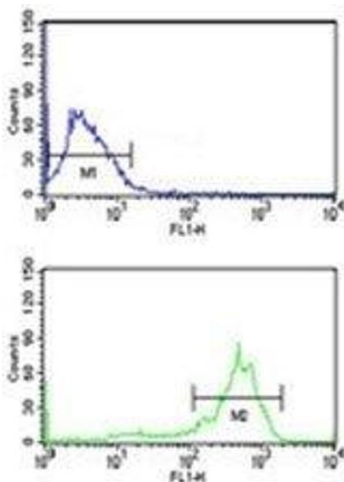
Preservative: Sodium azide

Precaution of Use: This product contains Sodium azide: a POISONOUS AND HAZARDOUS SUBSTANCE which should be handled by trained staff only.

Storage: -20 °C

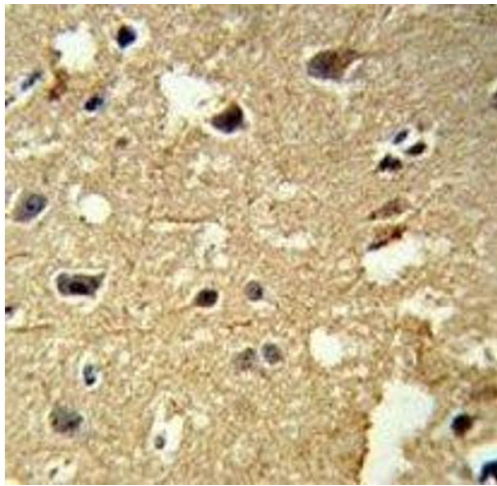
Storage Comment: Aliquot the anti-beta Tubulin antibody and store frozen at -20°C or colder. Avoid repeated freeze-thaw cycles.

Images



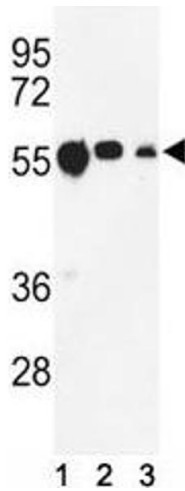
Flow Cytometry

Image 1. Anti-beta Tubulin antibody flow cytometry analysis of MCF-7 cells (bottom histogram) compared to a negative control cell (top histogram). FITC-conjugated goat-anti-rabbit secondary Ab was used for the analysis.



Immunohistochemistry

Image 2. IHC analysis of FFPE human brain tissue stained with anti-beta Tubulin antibody



Western Blotting

Image 3. Western blot analysis of anti-beta Tubulin antibody and (1) CEM, (2) MCF-7, and (3) MDA-MB231 lysate.

Please check the [product details page](#) for more images. Overall 5 images are available for ABIN3029338.