

Datasheet for ABIN3029340

anti-TUBB1 antibody

6 Images



[Go to Product page](#)

Overview

Quantity:	0.4 mL
Target:	TUBB1
Reactivity:	Human, Mouse, Rat
Host:	Mouse
Clonality:	Monoclonal
Conjugate:	This TUBB1 antibody is un-conjugated
Application:	Western Blotting (WB), ELISA, Immunohistochemistry (IHC), Immunofluorescence (IF)

Product Details

Immunogen:	Tubulin beta chain recombinant protein was used to produce this beta-Tubulin antibody.
Clone:	87CT59-3-7
Isotype:	IgG2b kappa
Cross-Reactivity (Details):	Expected species reactivity: Rat, Bovine, Pig, Chicken, Hamster, Xenopus
Purification:	Purified

Target Details

Target:	TUBB1
Alternative Name:	Tubulin beta 1 (TUBB1) (TUBB1 Products)
Background:	Tubulin is the major constituent of microtubules. It binds two moles of GTP, one at an exchangeable site on the beta chain and one at a non-exchangeable site on the alpha chain.

Target Details

UniProt: [P07437](#)

Pathways: [Microtubule Dynamics](#)

Application Details

Application Notes: Titration of the beta-Tubulin antibody may be required due to differences in protocols and secondary/substrate sensitivity.\. Western blot: 1:1000,Immunofluorescence: 1:25,IHC (Paraffin): 1:10-1:50

Restrictions: For Research Use only

Handling

Format: Liquid

Buffer: In 1X PBS pH 7.4 with 0.09 % sodium azide

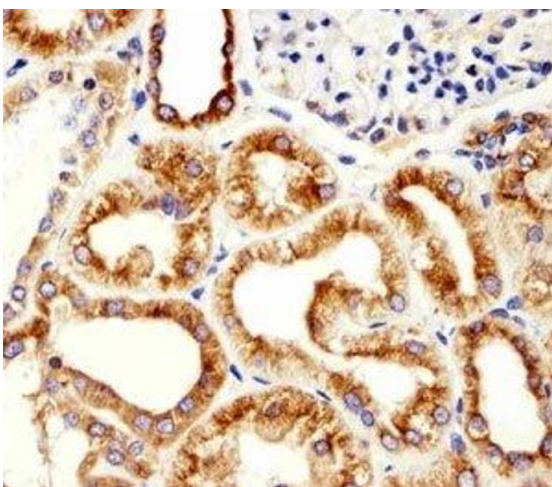
Preservative: Sodium azide

Precaution of Use: This product contains Sodium azide: a POISONOUS AND HAZARDOUS SUBSTANCE which should be handled by trained staff only.

Storage: -20 °C

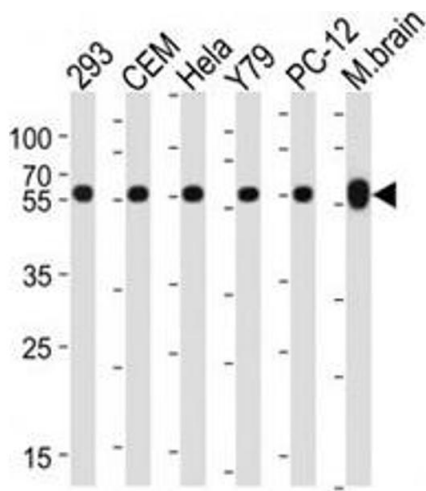
Storage Comment: Aliquot the beta-Tubulin antibody and store frozen at -20°C or colder. Avoid repeated freeze-thaw cycles.

Images



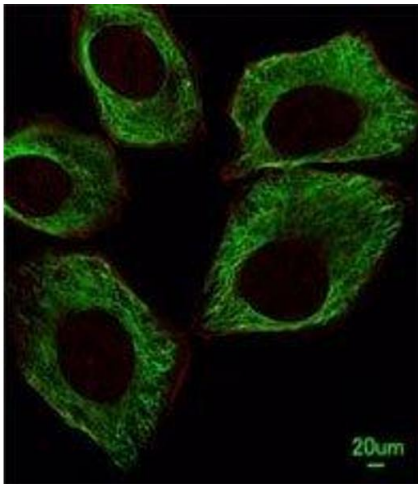
Immunohistochemistry

Image 1. Immunohistochemical analysis of paraffin-embedded human kidney using beta-Tubulin antibody at 1:25 dilution.



Western Blotting

Image 2. Western blot analysis of lysate from 293, CEM, HeLa, Y79, rat PC-12 cell line, mouse brain tissue lysate using TUBB / beta-Tubulin antibody at 1:1000 for each lane.



Immunofluorescence

Image 3. Immunofluorescent analysis of A549 cells using beta-Tubulin antibody at 1:25 dilution. Dylight Fluor 488-conjugated goat anti-mouse IgG was used as the secondary Ab (green). Cytoplasmic actin was counterstained with Dylight 554 (red) conjugated Phalloidin

Please check the [product details page](#) for more images. Overall 6 images are available for ABIN3029340.