

Datasheet for ABIN3029343
anti-TUBB2B antibody (AA 12-39)

5 Images

[Go to Product page](#)

Overview

Quantity:	0.4 mL
Target:	TUBB2B
Binding Specificity:	AA 12-39
Reactivity:	Human
Host:	Rabbit
Clonality:	Polyclonal
Conjugate:	This TUBB2B antibody is un-conjugated
Application:	Western Blotting (WB), Immunofluorescence (IF), ELISA, Immunohistochemistry (IHC)

Product Details

Immunogen:	A portion of amino acids 12-39 from the human protein was used as the immunogen for this TUBB2B antibody.
Isotype:	Ig Fraction
Cross-Reactivity (Details):	Expected species reactivity: Mouse, Rat, Bovine, Pig, Primate, Chicken, Xenopus
Purification:	Antigen affinity purified

Target Details

Target:	TUBB2B
Alternative Name:	TUBB2B (Tubulin beta 2B) (TUBB2B Products)
Background:	The protein encoded by this gene is a beta isoform of tubulin, which binds GTP and is a major

Target Details

component of microtubules. This gene is highly similar to TUBB2A and TUBB2C. Defects in this gene are a cause of asymmetric polymicrogyria. [provided by RefSeq].

UniProt: [Q9BVA1](#)

Pathways: [Microtubule Dynamics](#)

Application Details

Application Notes: Titration of the TUBB2B antibody may be required due to differences in protocols and secondary/substrate sensitivity.\. Immunofluorescence: 1:10-1:50,Western blot: 1:1000,IHC (Paraffin): 1:10-1:50

Restrictions: For Research Use only

Handling

Format: Liquid

Buffer: In 1X PBS pH 7.4 with 0.09 % sodium azide

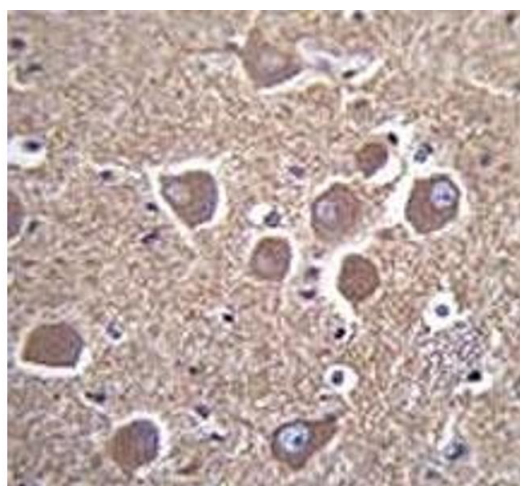
Preservative: Sodium azide

Precaution of Use: This product contains Sodium azide: a POISONOUS AND HAZARDOUS SUBSTANCE which should be handled by trained staff only.

Storage: -20 °C

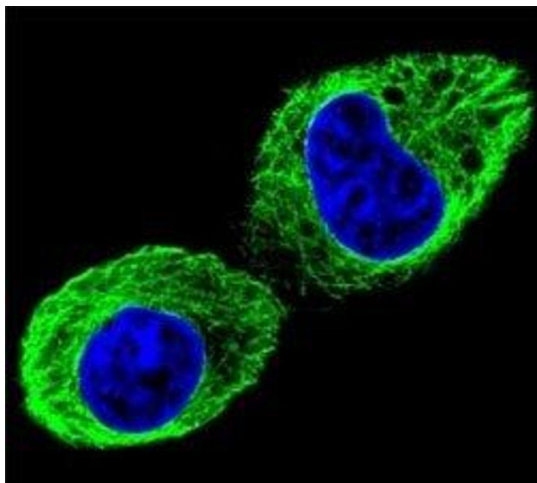
Storage Comment: Aliquot the TUBB2B antibody and store frozen at -20°C or colder. Avoid repeated freeze-thaw cycles.

Images



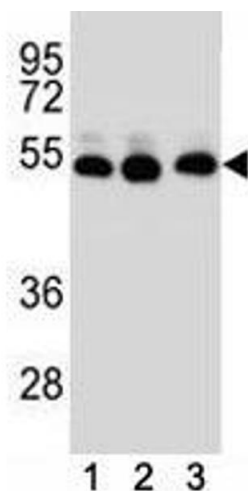
Immunohistochemistry

Image 1. TUBB2B antibody immunohistochemistry analysis in formalin fixed and paraffin embedded human brain tissue.



Immunofluorescence

Image 2. Confocal immunofluorescent analysis of TUBB2B antibody with HepG2 cells followed by Alexa Fluor 488-conjugated goat anti-rabbit IgG (green). DAPI was used as a nuclear counterstain (blue).



Western Blotting

Image 3. TUBB2B antibody western blot analysis of (1) HepG2, (2) HeLa, (3) MDA-MB231 lysate

Please check the [product details page](#) for more images. Overall 5 images are available for ABIN3029343.