

Datasheet for ABIN3029345
anti-TUBB3 antibody (AA 36-63)[Go to Product page](#)

7 Images

Overview

Quantity:	0.4 mL
Target:	TUBB3
Binding Specificity:	AA 36-63
Reactivity:	Human, Mouse
Host:	Rabbit
Clonality:	Polyclonal
Conjugate:	This TUBB3 antibody is un-conjugated
Application:	Western Blotting (WB), ELISA, Immunohistochemistry (IHC), Flow Cytometry (FACS)

Product Details

Immunogen:	A portion of amino acids 36-63 from the human protein was used as the immunogen for this beta III Tubulin antibody.
Isotype:	Ig Fraction
Cross-Reactivity (Details):	Expected species reactivity: Rat, Bovine, Primate, Chicken
Purification:	Antigen affinity purified

Target Details

Target:	TUBB3
Alternative Name:	beta III Tubulin (TUBB3) (TUBB3 Products)
Background:	Beta III tubulin is abundant in the central and peripheral nervous systems (CNS and PNS) where

Target Details

it is prominently expressed during fetal and postnatal development. As exemplified in cerebellar and sympathoadrenal neurogenesis, the distribution of beta III is neuron-associated, exhibiting distinct temporospatial gradients according to the regional neuroepithelia of origin. However, transient expression of this protein is also present in the subventricular zones of the CNS comprising putative neuronal- and/or glial precursor cells, as well as in Kulchitsky neuroendocrine cells of the fetal respiratory epithelium. This temporally restricted, potentially non-neuronal expression may have implications in the identification of presumptive neurons derived from embryonic stem cells.

UniProt: [Q13509](#)

Pathways: [Microtubule Dynamics](#), [M Phase](#)

Application Details

Application Notes: Titration of the beta III Tubulin antibody may be required due to differences in protocols and secondary/substrate sensitivity.\. Western blot: 1:1000,IHC (Paraffin): 1:10-1:50,Flow Cytometry: 1:10-1:50

Restrictions: For Research Use only

Handling

Format: Liquid

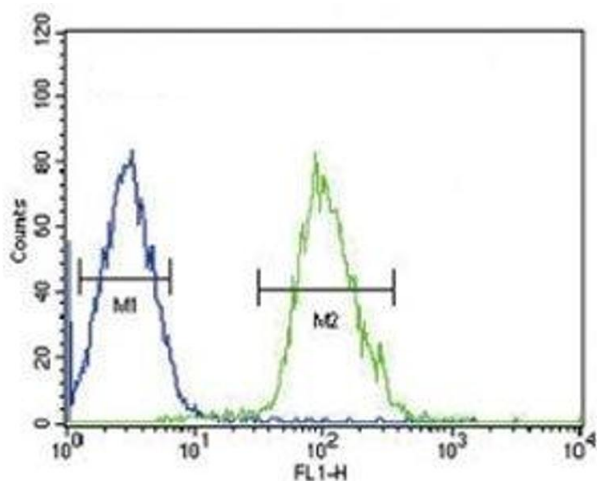
Buffer: In 1X PBS pH 7.4 with 0.09 % sodium azide

Preservative: Sodium azide

Precaution of Use: This product contains Sodium azide: a POISONOUS AND HAZARDOUS SUBSTANCE which should be handled by trained staff only.

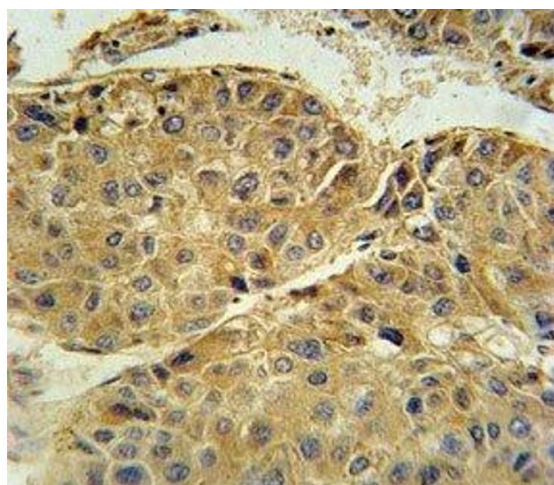
Storage: -20 °C

Storage Comment: Aliquot the beta III Tubulin antibody and store frozen at -20°C or colder. Avoid repeated freeze-thaw cycles.



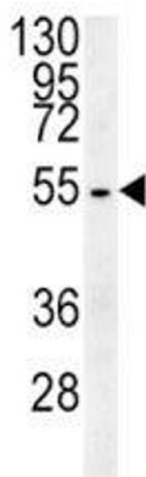
Flow Cytometry

Image 1. Beta III Tubulin antibody flow cytometric analysis of HepG2 cells (right histogram) compared to a negative control cell (left histogram). FITC-conjugated goat-anti-rabbit secondary Ab was used for the analysis.



Immunohistochemistry

Image 2. Beta III Tubulin antibody immunohistochemistry analysis in formalin fixed and paraffin embedded human hepatocarcinoma.



Western Blotting

Image 3. Beta III Tubulin antibody western blot analysis in HepG2 lysate

Please check the [product details page](#) for more images. Overall 7 images are available for ABIN3029345.