

Datasheet for ABIN3029346  
**anti-TUBD1 antibody (AA 366-392)**[Go to Product page](#)

## 2 Images

## Overview

Quantity:	0.4 mL
Target:	TUBD1
Binding Specificity:	AA 366-392
Reactivity:	Human
Host:	Rabbit
Clonality:	Polyclonal
Conjugate:	This TUBD1 antibody is un-conjugated
Application:	Western Blotting (WB), ELISA

## Product Details

Immunogen:	A portion of amino acids 366-392 from the human protein was used as the immunogen for this TUBD1 antibody.
Isotype:	Ig Fraction
Cross-Reactivity (Details):	Expected species reactivity: Primate
Purification:	Antigen affinity purified

## Target Details

Target:	TUBD1
Alternative Name:	TUBD1 (Tubulin delta 1) ( <a href="#">TUBD1 Products</a> )
Background:	In the elongating spermatid it is associated with the manchette, a specialized microtubule

Target Details

	system present during reshaping of the sperm head (By similarity).
UniProt:	<a href="#">Q9UJT1</a>
Pathways:	<a href="#">Microtubule Dynamics</a>

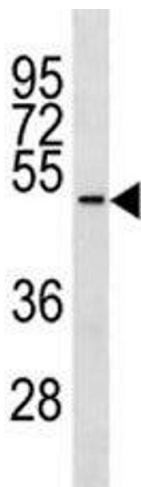
Application Details

Application Notes:	Titration of the TUBD1 antibody may be required due to differences in protocols and secondary/substrate sensitivity.\. Western blot: 1:1000
Restrictions:	For Research Use only

Handling

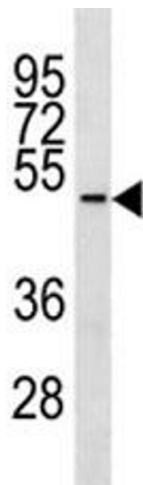
Format:	Liquid
Buffer:	In 1X PBS pH 7.4 with 0.09 % sodium azide
Preservative:	Sodium azide
Precaution of Use:	This product contains Sodium azide: a POISONOUS AND HAZARDOUS SUBSTANCE which should be handled by trained staff only.
Storage:	-20 °C
Storage Comment:	Aliquot the TUBD1 antibody and store frozen at -20°C or colder. Avoid repeated freeze-thaw cycles.

Images



**Western Blotting**

**Image 1.** TUBD1 antibody western blot analysis in ZR-75-1 lysate.



Western Blotting

**Image 2.** TUBD1 antibody western blot analysis in ZR-75-1 lysate.