

Datasheet for ABIN3029404
anti-TACSTD2 antibody (AA 162-190)[Go to Product page](#)

3 Images

Overview

Quantity:	0.4 mL
Target:	TACSTD2
Binding Specificity:	AA 162-190
Reactivity:	Human
Host:	Rabbit
Clonality:	Polyclonal
Conjugate:	This TACSTD2 antibody is un-conjugated
Application:	Western Blotting (WB), ELISA, Immunohistochemistry (IHC)

Product Details

Immunogen:	A portion of amino acids 162-190 from the human protein was used as the immunogen for this TROP2 antibody.
Isotype:	Ig Fraction
Purification:	Purified

Target Details

Target:	TACSTD2
Alternative Name:	TROP2 (TACSTD2 Products)
Background:	TROP2 is a carcinoma-associated antigen defined by the monoclonal antibody GA733. This antigen is a member of a family including at least two type I membrane proteins. It transduces an intracellular calcium signal and acts as a cell surface receptor. Mutations of its gene result in

Target Details

gelatinous drop-like corneal dystrophy, an autosomal recessive disorder characterized by severe corneal amyloidosis leading to blindness.

UniProt: [P09758](#)

Application Details

Application Notes: Titration of the TROP2 antibody may be required due to differences in protocols and secondary/substrate sensitivity.\. Western blot: 1:1000,IHC (Paraffin): 1:50-1:100

Restrictions: For Research Use only

Handling

Format: Liquid

Buffer: In 1X PBS, pH 7.4, with 0.09 % sodium azide

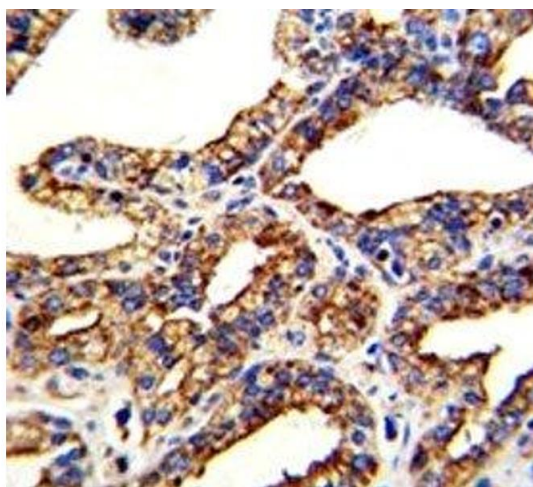
Preservative: Sodium azide

Precaution of Use: This product contains Sodium azide: a POISONOUS AND HAZARDOUS SUBSTANCE which should be handled by trained staff only.

Storage: -20 °C

Storage Comment: Aliquot the TROP2 antibody and store frozen at -20°C or colder. Avoid repeated freeze-thaw cycles.

Images



Immunohistochemistry

Image 1. IHC analysis of FFPE human prostate carcinoma with TROP2 antibody



Western Blotting

Image 2. Western blot analysis of TROP2 antibody and HL-60 lysate. Predicted molecular weight ~40 kDa.



Western Blotting

Image 3. Western blot analysis of TROP2 antibody and HL-60 lysate. Predicted molecular weight ~40 kDa.