



[Go to Product page](#)

Datasheet for ABIN3029415

anti-Ubiquilin 1 antibody (AA 296-326)

5 Images

Overview

Quantity:	0.4 mL
Target:	Ubiquilin 1 (UBQLN1)
Binding Specificity:	AA 296-326
Reactivity:	Human, Mouse
Host:	Rabbit
Clonality:	Polyclonal
Conjugate:	This Ubiquilin 1 antibody is un-conjugated
Application:	Western Blotting (WB), ELISA, Immunohistochemistry (IHC), Immunofluorescence (IF)

Product Details

Immunogen:	A portion of amino acids 296-326 from the human protein was used as the immunogen for this Ubiquilin1 antibody.
Isotype:	Ig Fraction
Cross-Reactivity (Details):	Expected species reactivity: Rat
Purification:	Purified

Target Details

Target:	Ubiquilin 1 (UBQLN1)
Alternative Name:	Ubiquilin1 (UBQLN1 Products)
Background:	Ubiquilin1 plays an important role in the regulation of different protein degradation mechanisms

Target Details

and pathways including ubiquitin-proteasome system (UPS), autophagy and endoplasmic reticulum-associated protein degradation (ERAD) pathway. [UniProt]

UniProt: [Q9UMX0](#)

Application Details

Application Notes: Titration of the Ubiquilin1 antibody may be required due to differences in protocols and secondary/substrate sensitivity.\. Immunofluorescence: 1:100,Western blot: 1:1000,IHC (Paraffin): 1:50-1:100

Restrictions: For Research Use only

Handling

Format: Liquid

Buffer: In 1X PBS pH 7.4 with 0.09 % sodium azide

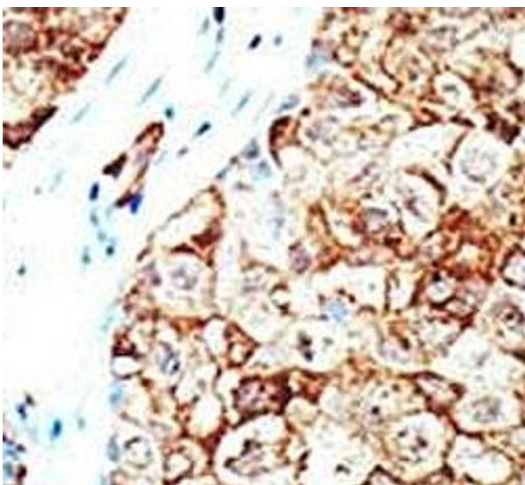
Preservative: Sodium azide

Precaution of Use: This product contains Sodium azide: a POISONOUS AND HAZARDOUS SUBSTANCE which should be handled by trained staff only.

Storage: -20 °C

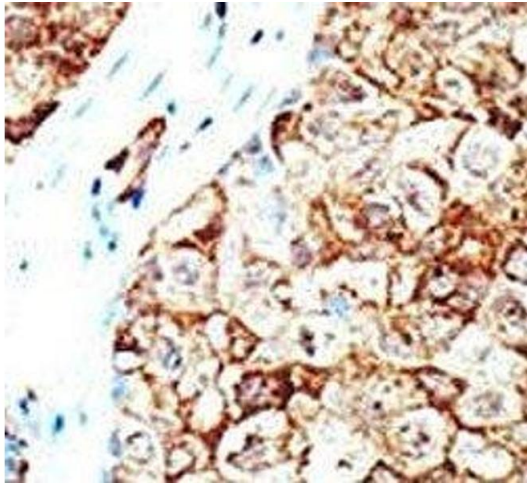
Storage Comment: Aliquot the Ubiquilin1 antibody and store frozen at -20°C or colder. Avoid repeated freeze-thaw cycles.

Images



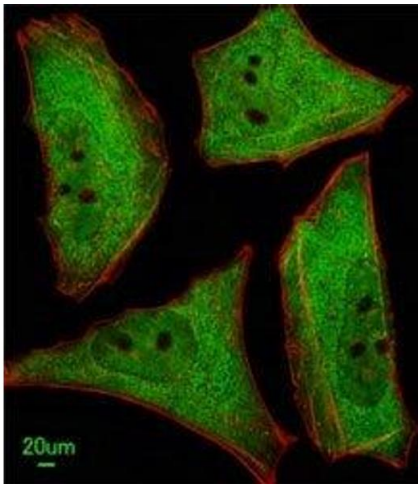
Immunohistochemistry

Image 1. IHC analysis of FFPE human breast carcinoma tissue stained with the Ubiquilin1 antibody



Immunohistochemistry

Image 2. IHC analysis of FFPE human breast carcinoma tissue stained with the Ubiquilin1 antibody



Immunofluorescence

Image 3. Immunofluorescent analysis of HeLa cells using Ubiquilin1 antibody; Ab was diluted at 1:100 dilution. Alexa Fluor 488-conjugated goat anti-rabbit IgG was used as the secondary Ab (green). Cytoplasmic actin was counterstained with Dylight Fluor 554 (red) c

Please check the [product details page](#) for more images. Overall 5 images are available for ABIN3029415.