

Datasheet for ABIN3029422
anti-UCHL1 antibody (AA 187-216)

7 Images

[Go to Product page](#)

Overview

Quantity:	0.4 mL
Target:	UCHL1
Binding Specificity:	AA 187-216
Reactivity:	Human, Mouse
Host:	Rabbit
Clonality:	Polyclonal
Conjugate:	This UCHL1 antibody is un-conjugated
Application:	Western Blotting (WB), Immunohistochemistry (IHC), ELISA, Immunofluorescence (IF), Flow Cytometry (FACS)

Product Details

Immunogen:	A portion of amino acids 187-216 from the human protein was used as the immunogen for this PGP9.5 antibody.
Isotype:	Ig Fraction
Cross-Reactivity (Details):	Expected species reactivity: Rat, Bovine, Pig, Primate
Purification:	Antigen affinity purified

Target Details

Target:	UCHL1
Alternative Name:	PGP9.5 (UCHL1 Products)

Target Details

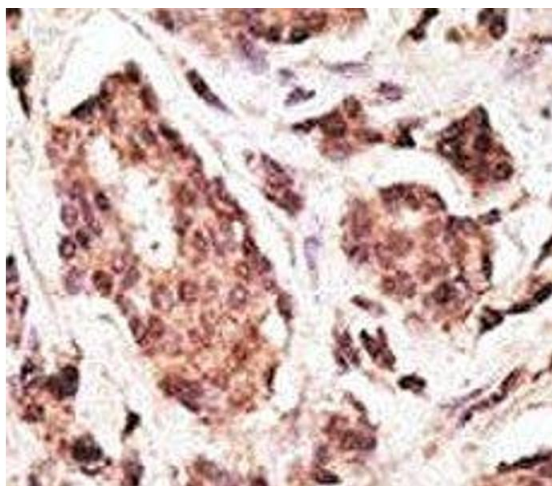
Background:	UCHL1 is a member of a gene family whose products hydrolyze small C-terminal adducts of ubiquitin to generate the ubiquitin monomer. Expression of UCHL1 is highly specific to neurons and to cells of the diffuse neuroendocrine system and their tumors. It is present in all neurons.
UniProt:	P09936
Pathways:	Feeding Behaviour

Application Details

Application Notes:	Titration of the PGP9.5 antibody may be required due to differences in protocols and secondary/substrate sensitivity.\. Western blot: 1:1000,IHC (Paraffin): 1:50-1:100,Flow Cytometry: 1:10-1:50,Immunofluorescence: 1:10-1:50
Restrictions:	For Research Use only

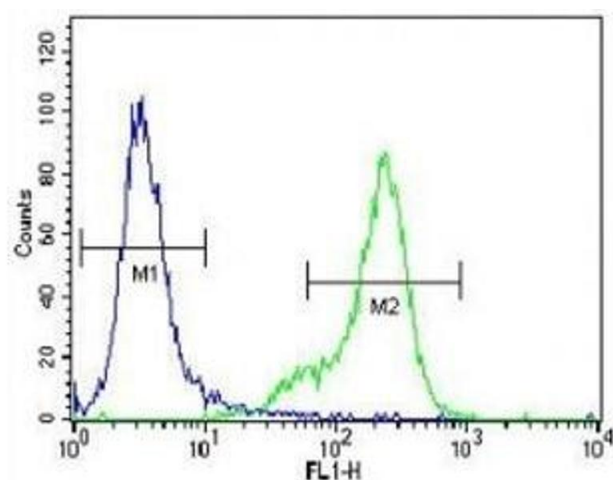
Handling

Format:	Liquid
Buffer:	In 1X PBS, pH 7.4, with 0.09 % sodium azide
Preservative:	Sodium azide
Precaution of Use:	This product contains Sodium azide: a POISONOUS AND HAZARDOUS SUBSTANCE which should be handled by trained staff only.
Storage:	-20 °C
Storage Comment:	Aliquot the PGP9.5 antibody and store frozen at -20°C or colder. Avoid repeated freeze-thaw cycles.



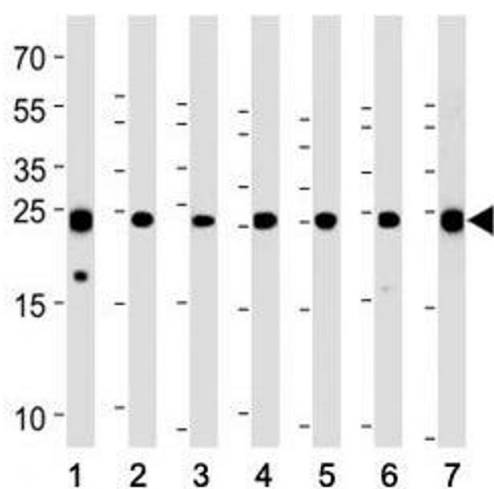
Immunohistochemistry

Image 1. IHC analysis of FFPE human breast carcinoma tissue stained with the PGP9.5 antibody



Flow Cytometry

Image 2. PGP9.5 antibody flow cytometric analysis of NCI-H460 cells (right histogram) compared to a negative control (left histogram). FITC-conjugated goat-anti-rabbit secondary Ab was used for the analysis.



Western Blotting

Image 3. PGP9.5 antibody western blot analysis with (1) U266, (2) SH-SY5Y, (3) NCI-H1299, (4) mouse Neuro-2a, (5) rat C6, (6) PC-12 cell line and (7) mouse brain tissue lysate. Predicted molecular weight ~25 kDa.

Please check the [product details page](#) for more images. Overall 7 images are available for ABIN3029422.