

Datasheet for ABIN3029440
anti-UHRF1 antibody (AA 229-257)

5 Images

[Go to Product page](#)

Overview

Quantity:	0.4 mL
Target:	UHRF1
Binding Specificity:	AA 229-257
Reactivity:	Human
Host:	Rabbit
Clonality:	Polyclonal
Conjugate:	This UHRF1 antibody is un-conjugated
Application:	Western Blotting (WB), ELISA, Immunofluorescence (IF), Flow Cytometry (FACS)

Product Details

Immunogen:	A portion of amino acids 229-257 from the human protein was used as the immunogen for this UHRF1 antibody.
Isotype:	Ig Fraction
Purification:	Antigen affinity purified

Target Details

Target:	UHRF1
Alternative Name:	UHRF1 (UHRF1 Products)
Background:	UHRF1 is a member of a subfamily of RING-finger type E3 ubiquitin ligases. The protein binds to specific DNA sequences, and recruits a histone acetylase to regulate gene expression. Its expression peaks at late G1 phase and continues during G2 and M phases of the cell cycle. It

Target Details

plays a major role in the G1/S transition by regulating topoisomerase IIalpha and retinoblastoma gene expression, and functions in the p53-dependent DNA damage checkpoint.

UniProt: [Q96T88](#)

Application Details

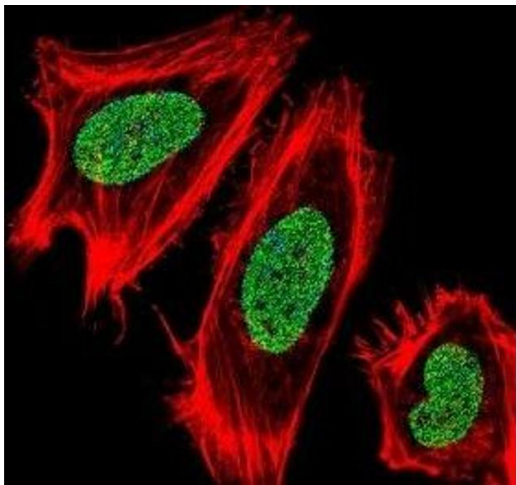
Application Notes: Titration of the UHRF1 antibody may be required due to differences in protocols and secondary/substrate sensitivity.\. Western blot: 1:1000,Flow Cytometry: 1:10-1:50,Immunofluorescence: 1:10-1:50

Restrictions: For Research Use only

Handling

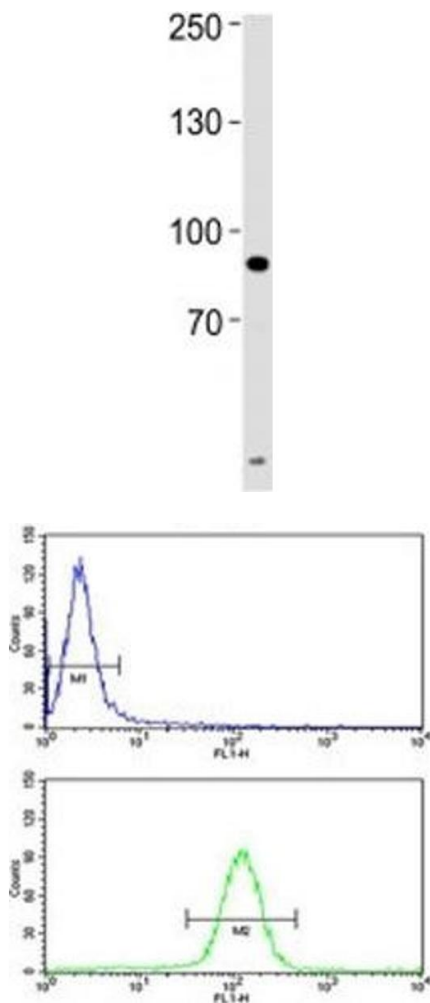
Format:	Liquid
Buffer:	In 1X PBS, pH 7.4, with 0.09 % sodium azide
Preservative:	Sodium azide
Precaution of Use:	This product contains Sodium azide: a POISONOUS AND HAZARDOUS SUBSTANCE which should be handled by trained staff only.
Storage:	-20 °C
Storage Comment:	Aliquot the UHRF1 antibody and store frozen at -20°C or colder. Avoid repeated freeze-thaw cycles.

Images



Immunofluorescence

Image 1. Fluorescent confocal image of HeLa cells stained with UHRF1 antibody. Alexa Fluor 488 conjugated secondary (green) was used. UHRF1 immunoreactivity is localized to the nucleus.



Western Blotting

Image 2. UHRF1 antibody western blot analysis of HeLa lysate. Predicted molecular weight ~ 88 kDa.

Flow Cytometry

Image 3. UHRF1 antibody flow cytometry analysis of HeLa cells (green) compared to a negative control (blue). FITC-conjugated goat-anti-rabbit secondary Ab was used for the analysis.

Please check the [product details page](#) for more images. Overall 5 images are available for ABIN3029440.