

Datasheet for ABIN3029449

**anti-ULK1 antibody**

5 Images

[Go to Product page](#)

## Overview

Quantity:	0.4 mL
Target:	ULK1
Reactivity:	Human, Mouse
Host:	Rabbit
Clonality:	Polyclonal
Conjugate:	This ULK1 antibody is un-conjugated
Application:	ELISA, Western Blotting (WB), Immunohistochemistry (IHC), Flow Cytometry (FACS)

## Product Details

Immunogen:	This ULK1 antibody was produced from rabbits immunized with a human recombinant protein.
Isotype:	Ig Fraction
Purification:	Purified

## Target Details

Target:	ULK1
Alternative Name:	ULK1 ( <a href="#">ULK1 Products</a> )
Background:	<p>ULK1/ATG1 is involved in autophagy. It is required for autophagosome formation. Target of the TOR kinase signaling pathway that regulates autophagy through the control of phosphorylation status of ATG13 and ULK1, and the regulation of the ATG13-ULK1-RB1CC1 complex.</p> <p>Phosphorylates ATG13. It is involved in axon growth and plays an essential role in neurite extension of cerebellar granule cells. [UniProt]</p>

## Target Details

UniProt:	<a href="#">O75385</a>
Pathways:	<a href="#">Regulation of Cell Size, Autophagy</a>

## Application Details

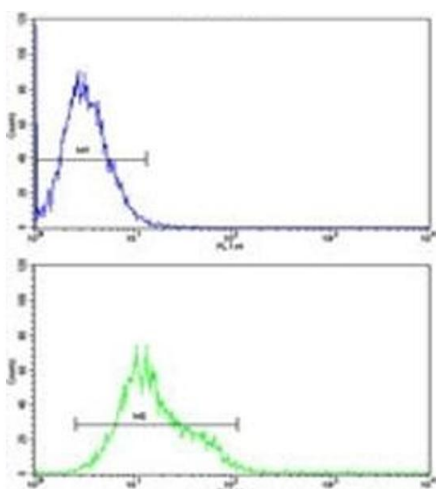
Application Notes:	Titration of the ULK1 antibody may be required due to differences in protocols and secondary/substrate sensitivity.\. Western blot: 1:1000,IHC (Paraffin): 1:50-1:100,Flow Cytometry: 1:10-1:50
--------------------	---

Restrictions:	For Research Use only
---------------	-----------------------

## Handling

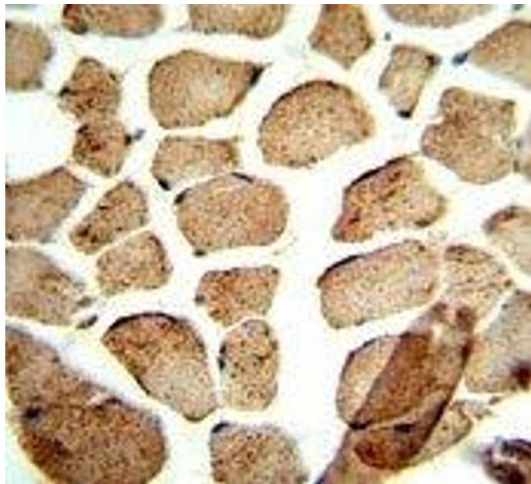
Format:	Liquid
Buffer:	In 1X PBS, pH 7.4, with 0.09 % sodium azide
Preservative:	Sodium azide
Precaution of Use:	This product contains Sodium azide: a POISONOUS AND HAZARDOUS SUBSTANCE which should be handled by trained staff only.
Storage:	-20 °C
Storage Comment:	Aliquot the ULK1 antibody and store frozen at -20°C or colder. Avoid repeated freeze-thaw cycles.

## Images



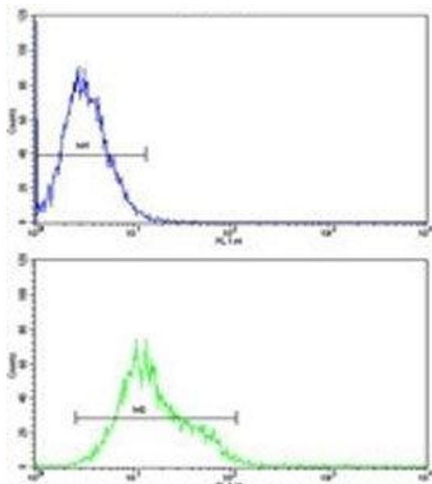
### Flow Cytometry

**Image 1.** ULK1 antibody flow cytometric analysis of K562 cells (green) compared to a [negative control](#) (blue). FITC-conjugated goat-anti-rabbit secondary Ab was used for the analysis.



#### Immunohistochemistry

**Image 2.** IHC analysis of FFPE human skeletal muscle stained with ULK1 antibody



#### Flow Cytometry

**Image 3.** ULK1 antibody flow cytometric analysis of K562 cells (green) compared to a negative control (blue). FITC-conjugated goat-anti-rabbit secondary Ab was used for the analysis.

Please check the [product details page](#) for more images. Overall 5 images are available for ABIN3029449.