

Datasheet for ABIN3029471  
**anti-AKT2 antibody (AA 452-481)**

5 Images



[Go to Product page](#)

## Overview

Quantity:	0.4 mL
Target:	AKT2
Binding Specificity:	AA 452-481
Reactivity:	Human
Host:	Rabbit
Clonality:	Polyclonal
Conjugate:	This AKT2 antibody is un-conjugated
Application:	Western Blotting (WB), ELISA, Immunohistochemistry (IHC), Immunofluorescence (IF)

## Product Details

Immunogen:	A portion of amino acids 452-481 from the human protein was used as the immunogen for this AKT2 antibody.
Isotype:	Ig Fraction
Cross-Reactivity (Details):	Expected species reactivity: Mouse, Rat
Purification:	Antigen affinity purified

## Target Details

Target:	AKT2
Alternative Name:	AKT2 ( <a href="#">AKT2 Products</a> )
Background:	AKT2 is a protein belonging to a subfamily of serine/threonine kinases containing SH2-like (Src

## Target Details

homology 2-like) domains. AKT2 has been shown to be amplified and overexpressed in 2 of 8 ovarian carcinoma cell lines and 2 of 15 primary ovarian tumors. Overexpression of AKT2 contributes to the malignant phenotype of a subset of human ductal pancreatic cancers. AKT2 is a general protein kinase capable of phosphorylating several known proteins.

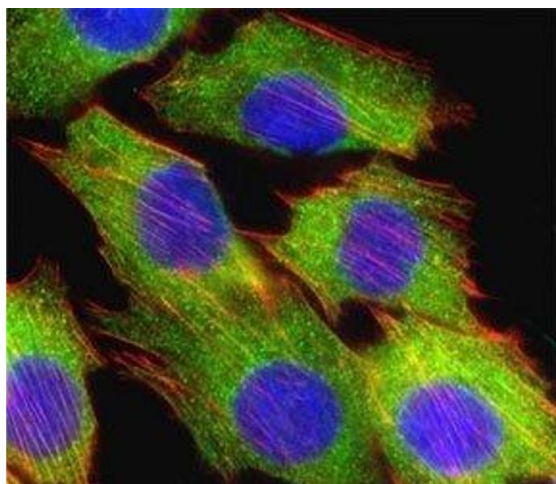
UniProt:	<a href="#">P31751</a>
Pathways:	<a href="#">PI3K-Akt Signaling</a> , <a href="#">RTK Signaling</a> , <a href="#">AMPK Signaling</a> , <a href="#">TLR Signaling</a> , <a href="#">Cellular Glucan Metabolic Process</a> , <a href="#">Regulation of Carbohydrate Metabolic Process</a> , <a href="#">Hepatitis C</a> , <a href="#">VEGF Signaling</a>

## Application Details

Application Notes:	Titration of the AKT2 antibody may be required due to differences in protocols and secondary/substrate sensitivity.\. Immunofluorescence: 1:10-1:50,Western blot: 1:1000,IHC (Paraffin): 1:10-1:50
Restrictions:	For Research Use only

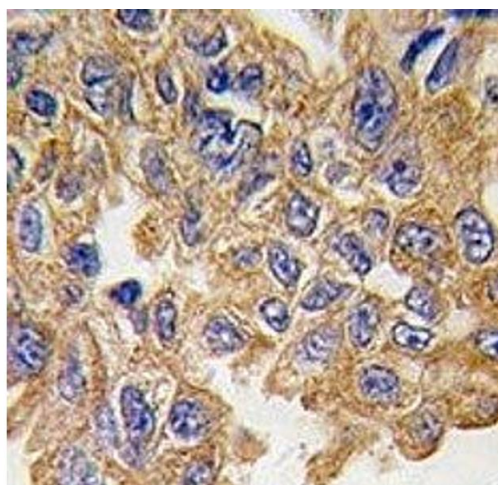
## Handling

Format:	Liquid
Buffer:	In 1X PBS, pH 7.4, with 0.09 % sodium azide
Preservative:	Sodium azide
Precaution of Use:	This product contains Sodium azide: a POISONOUS AND HAZARDOUS SUBSTANCE which should be handled by trained staff only.
Storage:	-20 °C
Storage Comment:	Aliquot the AKT2 antibody and store frozen at -20°C or colder. Avoid repeated freeze-thaw cycles.



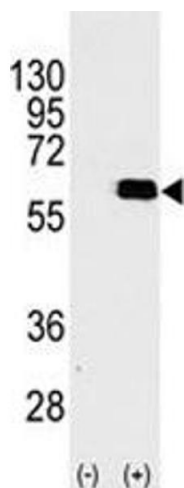
#### Immunofluorescence

**Image 1.** Fluorescent confocal image of C2C12 cell stained with AKT2 antibody at 1:25. Immunoreactivity is localized to the cytoplasm.



#### Immunohistochemistry

**Image 2.** IHC analysis of FFPE human lung carcinoma tissue stained with AKT2 antibody



#### Western Blotting

**Image 3.** Western blot analysis of AKT2 antibody and 293 cell lysate (2 ug/lane) either nontransfected (Lane 1) or transiently transfected with the AKT2 gene (2).

Please check the [product details page](#) for more images. Overall 5 images are available for ABIN3029471.