

Datasheet for ABIN3029475  
**anti-AKT2 antibody**

5 Images



[Go to Product page](#)

## Overview

Quantity:	0.4 mL
Target:	AKT2
Reactivity:	Human, Mouse
Host:	Mouse
Clonality:	Monoclonal
Conjugate:	This AKT2 antibody is un-conjugated
Application:	Western Blotting (WB), ELISA, Immunohistochemistry (IHC), Immunofluorescence (IF)

## Product Details

Immunogen:	This anti-AKT2 antibody was produced from a mouse immunized with AKT2 recombinant protein.
Clone:	148CT5-4-1-4
Isotype:	IgG1
Purification:	Purified

## Target Details

Target:	AKT2
Alternative Name:	AKT2 ( <a href="#">AKT2 Products</a> )
Background:	AKT2 is a putative oncogene encoding a protein belonging to a subfamily of serine/threonine kinases containing SH2-like (Src homology 2-like) domains. AKT2 was shown to be amplified and overexpressed in 2 of 8 ovarian carcinoma cell lines and 2 of 15 primary ovarian tumors.

## Target Details

---

Overexpression contributes to the malignant phenotype of a subset of human ductal pancreatic cancers. The encoded protein is a general protein kinase capable of phosphorylating several known proteins.

UniProt: [P31751](#)

Pathways: [PI3K-Akt Signaling](#), [RTK Signaling](#), [AMPK Signaling](#), [TLR Signaling](#), [Cellular Glucan Metabolic Process](#), [Regulation of Carbohydrate Metabolic Process](#), [Hepatitis C](#), [VEGF Signaling](#)

## Application Details

---

Application Notes: Titration of the anti-AKT2 antibody may be required due to differences in protocols and secondary/substrate sensitivity.\. Western blot: 1:100-1:500,IHC (Paraffin): 1:50-1:100,Immunofluorescence: 1:10-1:50

Restrictions: For Research Use only

## Handling

---

Format: Liquid

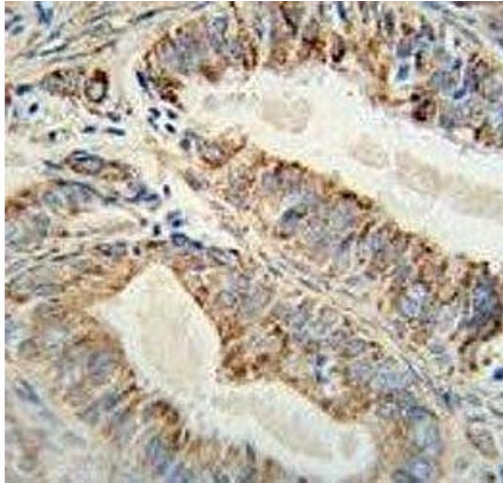
Buffer: In 1X PBS pH 7.4 with 0.09 % sodium azide

Preservative: Sodium azide

Precaution of Use: This product contains Sodium azide: a POISONOUS AND HAZARDOUS SUBSTANCE which should be handled by trained staff only.

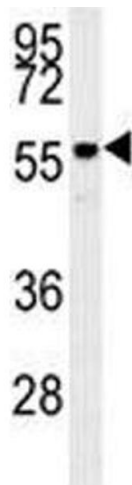
Storage: -20 °C

Storage Comment: Aliquot the anti-AKT2 antibody and store frozen at -20°C or colder. Avoid repeated freeze-thaw cycles.



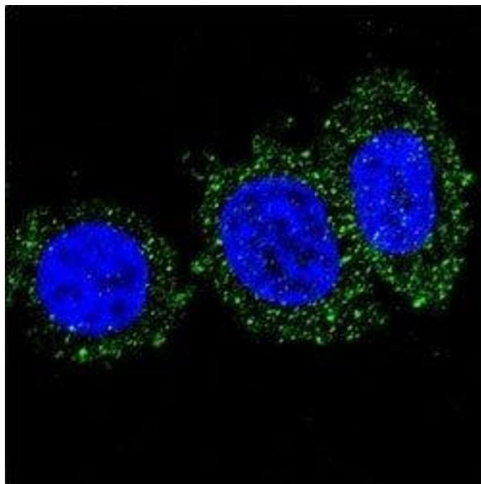
#### Immunohistochemistry

**Image 1.** Anti-AKT2 antibody immunohistochemistry analysis in formalin fixed and paraffin embedded human prostate carcinoma.



#### Western Blotting

**Image 2.** Anti-AKT2 antibody western blot analysis in mouse brain tissue lysate



#### Immunofluorescence

**Image 3.** Confocal immunofluorescent analysis of anti-AKT2 antibody with HeLa cells followed by Alexa Fluor 488-conjugated goat anti-mouse IgG (green). DAPI was used as a nuclear counterstain (blue).

Please check the [product details page](#) for more images. Overall 5 images are available for ABIN3029475.