



[Go to Product page](#)

Datasheet for ABIN3029477
anti-AKT2 antibody (AA 416-444)

7 Images

Overview

| | |
|----------------------|--|
| Quantity: | 0.4 mL |
| Target: | AKT2 |
| Binding Specificity: | AA 416-444 |
| Reactivity: | Human |
| Host: | Rabbit |
| Clonality: | Polyclonal |
| Conjugate: | This AKT2 antibody is un-conjugated |
| Application: | Western Blotting (WB), ELISA, Immunohistochemistry (IHC), Immunofluorescence (IF), Flow Cytometry (FACS) |

Product Details

| | |
|-----------------------------|---|
| Immunogen: | A portion of amino acids 416-444 from the human protein was used as the immunogen for this AKT2 antibody. |
| Isotype: | Ig Fraction |
| Cross-Reactivity (Details): | Expected species reactivity: Mouse, Rat |
| Purification: | Purified |

Target Details

| | |
|-------------------|--|
| Target: | AKT2 |
| Alternative Name: | AKT2 (AKT2 Products) |

Target Details

Background: AKT2 is a protein belonging to a subfamily of serine/threonine kinases containing SH2-like (Src homology 2-like) domains. AKT2 has been shown to be amplified and overexpressed in 2 of 8 ovarian carcinoma cell lines and 2 of 15 primary ovarian tumors. Overexpression of AKT2 contributes to the malignant phenotype of a subset of human ductal pancreatic cancers. AKT2 is a general protein kinase capable of phosphorylating several known proteins.

UniProt: [P31751](#)

Pathways: [PI3K-Akt Signaling](#), [RTK Signaling](#), [AMPK Signaling](#), [TLR Signaling](#), [Cellular Glucan Metabolic Process](#), [Regulation of Carbohydrate Metabolic Process](#), [Hepatitis C](#), [VEGF Signaling](#)

Application Details

Application Notes: Titration of the AKT2 antibody may be required due to differences in protocols and secondary/substrate sensitivity. Immunofluorescence: 1:10-1:50, Western blot: 1:1000, IHC (Paraffin): 1:50-1:100, Flow Cytometry: 1:10-1:50

Restrictions: For Research Use only

Handling

Format: Liquid

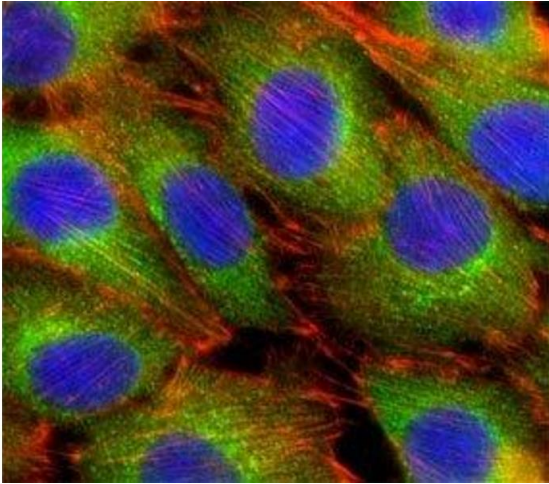
Buffer: In 1X PBS, pH 7.4, with 0.09 % sodium azide

Preservative: Sodium azide

Precaution of Use: This product contains Sodium azide: a POISONOUS AND HAZARDOUS SUBSTANCE which should be handled by trained staff only.

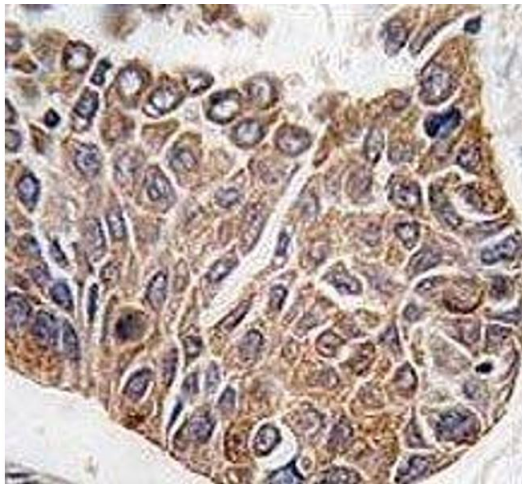
Storage: -20 °C

Storage Comment: Aliquot the AKT2 antibody and store frozen at -20°C or colder. Avoid repeated freeze-thaw cycles.



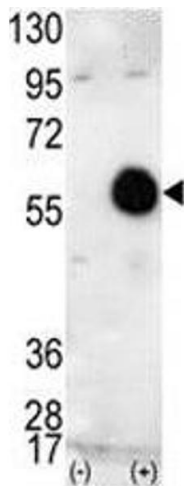
Immunofluorescence

Image 1. Fluorescent confocal image of C2C12 cells stained with AKT2 antibody at 1:25. Immunoreactivity is localized to the cytoplasm.



Immunohistochemistry

Image 2. IHC analysis of FFPE human lung carcinoma tissue stained with AKT2 antibody



Western Blotting

Image 3. Western blot analysis of AKT2 antibody and 293 cell lysate (2 ug/lane) either nontransfected (Lane 1) or transiently transfected with the human gene (2).

Please check the [product details page](#) for more images. Overall 7 images are available for ABIN3029477.