

Datasheet for ABIN3029480
anti-AKT3 antibody (pSer472)



[Go to Product page](#)

2 Images

Overview

Quantity:	0.4 mL
Target:	AKT3
Binding Specificity:	pSer472
Reactivity:	Human
Host:	Rabbit
Clonality:	Polyclonal
Conjugate:	This AKT3 antibody is un-conjugated
Application:	ELISA, Dot Blot (DB)

Product Details

Immunogen:	This phospho-AKT3 antibody was produced from rabbits immunized with a KLH conjugated synthetic phosphopeptide corresponding to amino acid residues surrounding pS472 of human AKT3.
Isotype:	Ig Fraction
Cross-Reactivity (Details):	Expected species reactivity: Mouse, Rat
Purification:	Antigen affinity purified

Target Details

Target:	AKT3
Alternative Name:	AKT3 (AKT3 Products)

Target Details

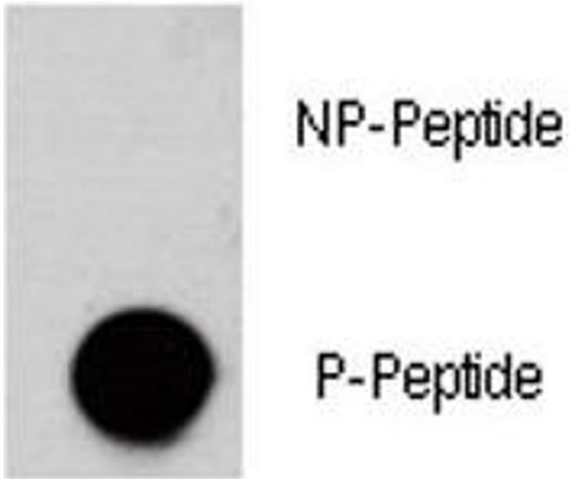
Background:	AKT3 is a member of the AKT, also called PKB, serine/threonine protein kinase family. AKT kinases are known to be regulators of cell signaling in response to insulin and growth factors. This kinase has been shown to be stimulated by platelet-derived growth factor (PDGF), insulin, and insulin-like growth factor 1 (IGF1).
UniProt:	Q9Y243
Pathways:	PI3K-Akt Signaling , RTK Signaling , TLR Signaling , Hepatitis C , VEGF Signaling

Application Details

Application Notes:	The stated application concentrations are suggested starting amounts. Titration of the phospho-AKT3 antibody may be required due to differences in protocols and secondary/substrate sensitivity. \. Dot blot: 1:500
Restrictions:	For Research Use only

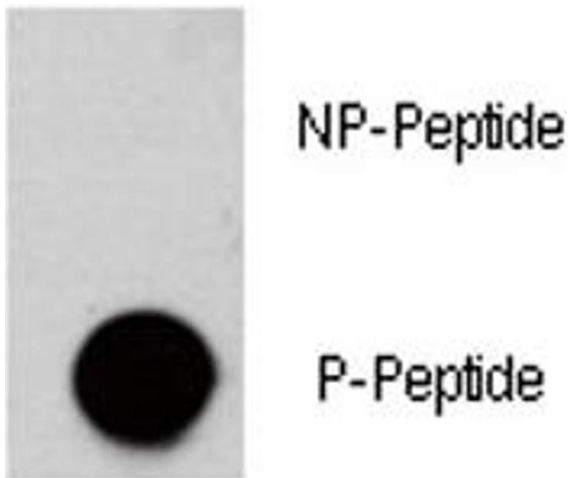
Handling

Format:	Liquid
Buffer:	In 1X PBS, pH 7.4, with 0.09 % sodium azide
Preservative:	Sodium azide
Precaution of Use:	This product contains Sodium azide: a POISONOUS AND HAZARDOUS SUBSTANCE which should be handled by trained staff only.
Storage:	-20 °C
Storage Comment:	Store at 4°C for up to one month. For long term, aliquot the phospho-AKT3 antibody and store frozen at -20°C or colder. Avoid repeated freeze-thaw cycles.



Dot Blot

Image 1. Dot blot analysis of phospho-AKT3 antibody. 50ng of phos-peptide or nonphos-peptide per dot were spotted.



Dot Blot

Image 2. Dot blot analysis of phospho-AKT3 antibody. 50ng of phos-peptide or nonphos-peptide per dot were spotted.