

Datasheet for ABIN3029484
anti-CrkL antibody (AA 286-303)



[Go to Product page](#)

2 Images

Overview

Quantity:	100 µg
Target:	CrkL (CRKL)
Binding Specificity:	AA 286-303
Reactivity:	Human, Mouse, Rat
Host:	Rabbit
Clonality:	Polyclonal
Conjugate:	This CrkL antibody is un-conjugated
Application:	Western Blotting (WB)

Product Details

Immunogen:	Amino acids 286-303 (FPFTHVKIFDPQNPENE-human) were used as the immunogen for this CrkL antibody.
Isotype:	IgG
Purification:	Antigen affinity

Target Details

Target:	CrkL (CRKL)
Alternative Name:	CrkL (CRKL Products)
Background:	V-Crk sarcoma virus CT10 oncogene homolog(avian)-like), also called CrkL, encodes a 303-amino acid polypeptide with a predicted molecular mass of ~36 kD. While CrkL is not the human homolog of CRK, it is similar to protein-tyrosine kinases with SH2 and SH3 (src

Target Details

homology) domains. By fluorescence in situ hybridization,the gene is localized to chromosome 22q11, centromeric of the chronic myelogenous leukemia breakpoint region. Senechal et al.(1996)showed that CRKL becomes phosphorylated when overexpressed, activates Ras-dependent and JNK pathways, and transforms fibroblasts. The authors also found CrkL to be a substrate for the BCR-ABL tyrosine kinase, leading them to conclude that it is a tyrosine kinase and an oncogene. CrkLwas required for normal cellular responses to Fgf8, including survival and migration, Erk activation, and target gene expression.

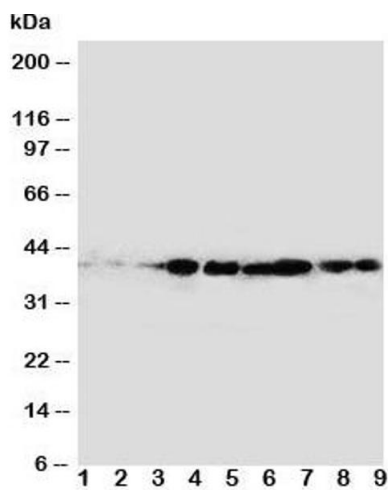
UniProt:	P46109
Pathways:	Interferon-gamma Pathway , Neurotrophin Signaling Pathway , Signaling of Hepatocyte Growth Factor Receptor

Application Details

Application Notes:	The stated application concentrations are suggested starting amounts. Titration of the CrkL antibody may be required due to differences in protocols and secondary/substrate sensitivity.\. Western blot: 0.5-1 µg/mL
Restrictions:	For Research Use only

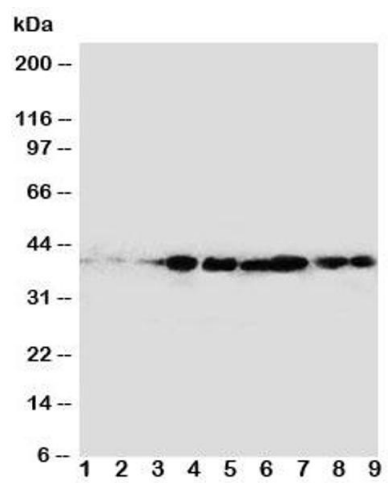
Handling

Buffer:	0.5 mg/mL if reconstituted with 0.2 mL sterile DI water
Storage:	-20 °C
Storage Comment:	After reconstitution, the CrkL antibody can be stored for up to one month at 4°C. For long-term, aliquot and store at -20°C. Avoid repeated freezing and thawing.



Western Blotting

Image 1. Western blot testing of CrkL antibody and rat samples 1: spleen; 2: ovary; 3: testis; and human samples 4: MM231; 5: A431; 6: MCF-7; Lane 7; MM231; 8: MM543; 9: Jurkat cell lysate. Expected size: 34~39KD



Western Blotting

Image 2. Western blot testing of CrkL antibody and rat samples 1: spleen