

Datasheet for ABIN3029487
anti-ERBB4 antibody (pTyr1162)

5 Images

[Go to Product page](#)

Overview

Quantity:	0.4 mL
Target:	ERBB4
Binding Specificity:	pTyr1162
Reactivity:	Human
Host:	Rabbit
Clonality:	Polyclonal
Conjugate:	This ERBB4 antibody is un-conjugated
Application:	Western Blotting (WB), Immunohistochemistry (IHC), ELISA, Immunofluorescence (IF)

Product Details

Immunogen:	This phospho-ERBB4 antibody was produced from rabbits immunized with a KLH conjugated synthetic phosphopeptide corresponding to amino acid residues surrounding pY1162 of human ERBB4.
Isotype:	Ig Fraction
Cross-Reactivity (Details):	Expected species reactivity: Mouse, Rat
Purification:	Antigen affinity purified

Target Details

Target:	ERBB4
Alternative Name:	ERBB4 (ERBB4 Products)

Target Details

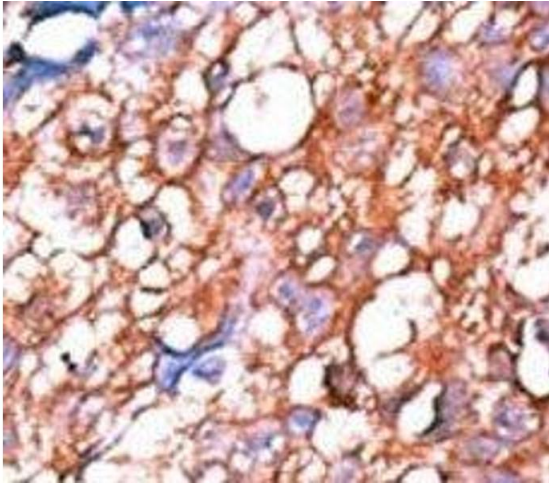
Background:	HER4/ERBB4 is a member of the type I receptor tyrosine kinase subfamily that includes EGFR, ERBB2 and ERBB3. It is a receptor for NDF/heregulin.
UniProt:	Q15303
Pathways:	RTK Signaling , Fc-epsilon Receptor Signaling Pathway , EGFR Signaling Pathway , Neurotrophin Signaling Pathway

Application Details

Application Notes:	Titration of the phospho-ERBB4 antibody may be required due to differences in protocols and secondary/substrate sensitivity.\. Western blot: 1:1000,IHC (Paraffin): 1:50-1:100,Immunofluorescence: 1:10-1:50
Restrictions:	For Research Use only

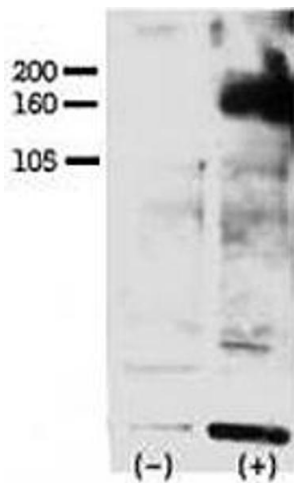
Handling

Format:	Liquid
Buffer:	In 1X PBS, pH 7.4, with 0.09 % sodium azide
Preservative:	Sodium azide
Precaution of Use:	This product contains Sodium azide: a POISONOUS AND HAZARDOUS SUBSTANCE which should be handled by trained staff only.
Storage:	-20 °C
Storage Comment:	Aliquot the phospho-ERBB4 antibody and store frozen at -20°C or colder. Avoid repeated freeze-thaw cycles.



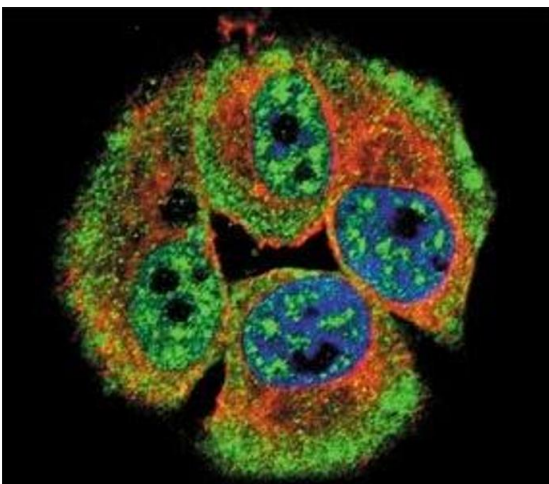
Immunohistochemistry

Image 1. IHC analysis of FFPE human hepatocarcinoma tissue stained with the phospho-ERBB4 antibody.



Western Blotting

Image 2. Western blot testing of phospho-ERBB4 antibody and FG pancreatic carcinoma cells treated with or without EGF (50ng/ml) for 15 min. Ab was used at 1:750. Data and protocol kindly provided by Dr. Weis of Cheresch Lab, UCSD.



Immunofluorescence

Image 3. Confocal immunofluorescent analysis of phospho-ERBB4 antibody with MCF-7 cells followed by Alexa Fluor 488-conjugated goat anti-rabbit IgG (green). Actin filaments have been labeled with Alexa Fluor 555 Phalloidin (red). DAPI was used as a nuclear counter

Please check the [product details page](#) for more images. Overall 5 images are available for ABIN3029487.