

Datasheet for ABIN3029490
anti-ERBB4 antibody (AA 25-55)



[Go to Product page](#)

3 Images

Overview

Quantity:	0.4 mL
Target:	ERBB4
Binding Specificity:	AA 25-55
Reactivity:	Human
Host:	Rabbit
Clonality:	Polyclonal
Conjugate:	This ERBB4 antibody is un-conjugated
Application:	Western Blotting (WB), ELISA, Immunohistochemistry (IHC)

Product Details

Immunogen:	A portion of amino acids 25-55 from the human protein was used as the immunogen for this HER4 antibody.
Isotype:	Ig Fraction
Cross-Reactivity (Details):	Expected species reactivity: Mouse, Rat
Purification:	Purified

Target Details

Target:	ERBB4
Alternative Name:	HER4 (ERBB4 Products)
Background:	Protein kinases are enzymes that transfer a phosphate group from a phosphate donor,

Target Details

generally the γ phosphate of ATP, onto an acceptor amino acid in a substrate protein. By this basic mechanism, protein kinases mediate most of the signal transduction in eukaryotic cells, regulating cellular metabolism, transcription, cell cycle progression, cytoskeletal rearrangement and cell movement, apoptosis, and differentiation. With more than 500 gene products, the protein kinase family is one of the largest families of proteins in eukaryotes. The family has been classified in 8 major groups based on sequence comparison of their tyrosine (PTK) or serine/threonine (STK) kinase catalytic domains.

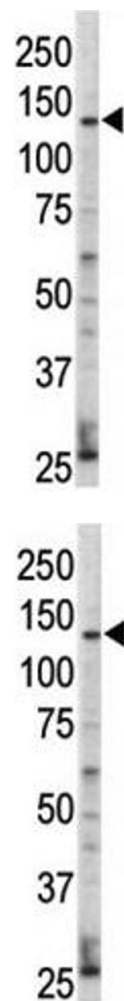
UniProt:	Q15303
Pathways:	RTK Signaling , Fc-epsilon Receptor Signaling Pathway , EGFR Signaling Pathway , Neurotrophin Signaling Pathway

Application Details

Application Notes:	Titration of the HER4 antibody may be required due to differences in protocols and secondary/substrate sensitivity.\. Western blot: 1:1000,IHC (Paraffin): 1:50-1:100
Restrictions:	For Research Use only

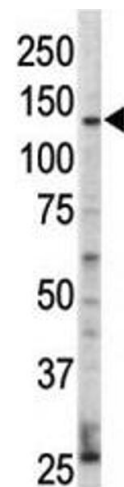
Handling

Format:	Liquid
Buffer:	In 1X PBS, pH 7.4, with 0.09 % sodium azide
Preservative:	Sodium azide
Precaution of Use:	This product contains Sodium azide: a POISONOUS AND HAZARDOUS SUBSTANCE which should be handled by trained staff only.
Storage:	-20 °C
Storage Comment:	Aliquot the HER4 antibody and store frozen at -20°C or colder. Avoid repeated freeze-thaw cycles.



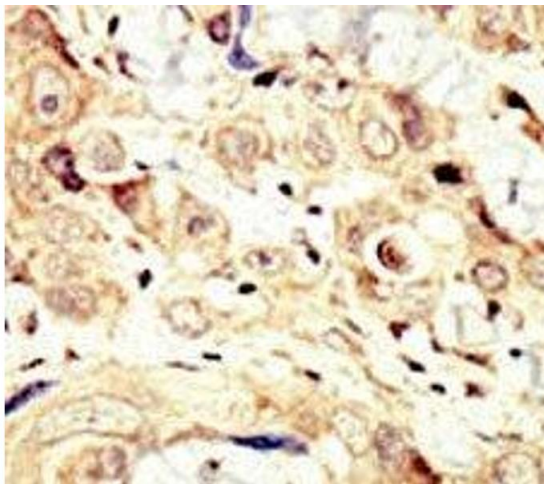
Western Blotting

Image 1. Western blot analysis of ErbB4 / HER4 antibody and HL-60 cell lysate. Predicted molecular weight: 147-180 kDa (precursor), 120, 80 kDa (cleaved forms).



Western Blotting

Image 2. Western blot analysis of ErbB4 / HER4 antibody and HL-60 cell lysate. Predicted molecular weight: 147-180 kDa (precursor), 120, 80 kDa (cleaved forms).



Immunohistochemistry

Image 3. IHC analysis of FFPE human breast carcinoma tissue stained with the HER4 antibody