



[Go to Product page](#)

Datasheet for ABIN3029493

## anti-ErbB2/Her2 antibody (pTyr1196)

### 5 Images

#### Overview

Quantity:	0.4 mL
Target:	ErbB2/Her2
Binding Specificity:	pTyr1196
Reactivity:	Human
Host:	Rabbit
Clonality:	Polyclonal
Conjugate:	This ErbB2/Her2 antibody is un-conjugated
Application:	Western Blotting (WB), ELISA, Immunofluorescence (IF), Dot Blot (DB)

#### Product Details

Immunogen:	This p-ERBB2 antibody was produced from rabbits immunized with a KLH conjugated synthetic phosphopeptide corresponding to amino acid residues surrounding pY1196 of human ERBB2.
Isotype:	Ig Fraction
Purification:	Antigen affinity purified

#### Target Details

Target:	ErbB2/Her2
Alternative Name:	ErbB2 ( <a href="#">ErbB2/Her2 Products</a> )
Background:	This gene encodes a member of the epidermal growth factor (EGF) receptor family of receptor tyrosine kinases. This protein has no ligand binding domain of its own and therefore cannot bind growth factors. However, it does bind tightly to other ligand-bound EGF receptor family

## Target Details

---

members to form a heterodimer, stabilizing ligand binding and enhancing kinase-mediated activation of downstream signalling pathways, such as those involving mitogen-activated protein kinase and phosphatidylinositol-3 kinase. Allelic variations at amino acid positions 654 and 655 of isoform a (positions 624 and 625 of isoform b) have been reported, with the most common allele, Ile654/Ile655, shown here. Amplification and/or overexpression of this gene has been reported in numerous cancers, including breast and ovarian tumors. Alternative splicing results in several additional transcript variants, some encoding different isoforms and others that have not been fully characterized.

UniProt: [P04626](#)

Pathways: [RTK Signaling](#), [Fc-epsilon Receptor Signaling Pathway](#), [EGFR Signaling Pathway](#), [Neurotrophin Signaling Pathway](#), [Skeletal Muscle Fiber Development](#)

## Application Details

---

Application Notes: Titration of the p-ERBB2 antibody may be required due to differences in protocols and secondary/substrate sensitivity. Western blot: 1:4000, Immunofluorescence: 1:100, Dot blot: 1:500

Restrictions: For Research Use only

## Handling

---

Format: Liquid

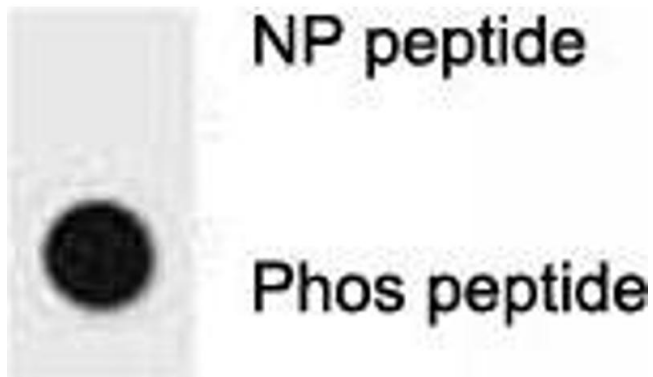
Buffer: In 1X PBS, pH 7.4, with 0.09 % sodium azide

Preservative: Sodium azide

Precaution of Use: This product contains Sodium azide: a POISONOUS AND HAZARDOUS SUBSTANCE which should be handled by trained staff only.

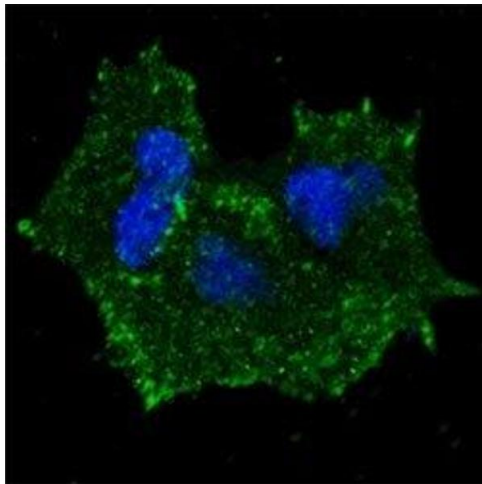
Storage: -20 °C

Storage Comment: Aliquot the p-ERBB2 antibody and store frozen at -20°C or colder. Avoid repeated freeze-thaw cycles.



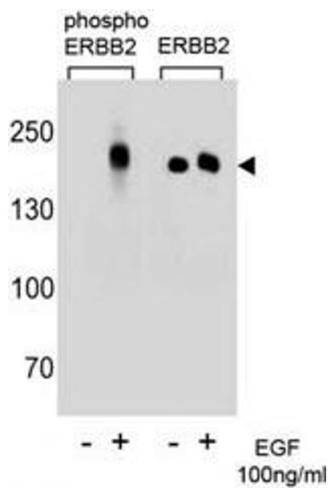
### Dot Blot

**Image 1.** Dot blot analysis of p-ERBB2 antibody. 50ng of phos-peptide or nonphos-peptide per dot were spotted.



### Immunofluorescence

**Image 2.** Fluorescent confocal image of MCF7 cells stained with p-ERBB2 antibody. MCF7 cells were fixed with 4% PFA (20 min), permeabilized with Triton X-100 (0.2%, 30 min). Cells were then incubated with primary Ab (1:100, 2 h at room temperature). For secondary A



### Western Blotting

**Image 3.** Western blot analysis of extracts from A431 cells, untreated or treated with EGF (100ng/ml) using p-ERBB2 antibody (left) or nonphos Ab (right)

Please check the [product details page](#) for more images. Overall 5 images are available for ABIN3029493.