

Datasheet for ABIN3029500  
**anti-ErbB2/Her2 antibody (pTyr1127)**



[Go to Product page](#)

5 Images

## Overview

Quantity:	0.4 mL
Target:	ErbB2/Her2
Binding Specificity:	pTyr1127
Reactivity:	Human
Host:	Rabbit
Clonality:	Polyclonal
Conjugate:	This ErbB2/Her2 antibody is un-conjugated
Application:	Western Blotting (WB), ELISA, Immunofluorescence (IF), Dot Blot (DB)

## Product Details

Immunogen:	This phos-ERBB2 antibody was produced from rabbits immunized with a KLH conjugated synthetic phosphopeptide corresponding to amino acid residues surrounding pY1127 of human HER2/ERBB2.
Isotype:	Ig Fraction
Purification:	Antigen affinity purified

## Target Details

Target:	ErbB2/Her2
Alternative Name:	ErbB2 ( <a href="#">ErbB2/Her2 Products</a> )
Background:	This gene encodes a member of the epidermal growth factor (EGF) receptor family of receptor tyrosine kinases. This protein has no ligand binding domain of its own and therefore cannot

## Target Details

---

bind growth factors. However, it does bind tightly to other ligand-bound EGF receptor family members to form a heterodimer, stabilizing ligand binding and enhancing kinase-mediated activation of downstream signalling pathways, such as those involving mitogen-activated protein kinase and phosphatidylinositol-3 kinase. Allelic variations at amino acid positions 654 and 655 of isoform a (positions 624 and 625 of isoform b) have been reported, with the most common allele, Ile654/Ile655, shown here. Amplification and/or overexpression of this gene has been reported in numerous cancers, including breast and ovarian tumors. Alternative splicing results in several additional transcript variants, some encoding different isoforms and others that have not been fully characterized.

---

UniProt: [P04626](#)

---

Pathways: [RTK Signaling](#), [Fc-epsilon Receptor Signaling Pathway](#), [EGFR Signaling Pathway](#), [Neurotrophin Signaling Pathway](#), [Skeletal Muscle Fiber Development](#)

## Application Details

---

Application Notes: Titration of the phos-ERBB2 antibody may be required due to differences in protocols and secondary/substrate sensitivity.\. Western blot: 1:1000-5000,Immunofluorescence: 1:100,Dot blot: 1:500

---

Restrictions: For Research Use only

## Handling

---

Format: Liquid

---

Buffer: In 1X PBS, pH 7.4, with 0.09 % sodium azide

---

Preservative: Sodium azide

---

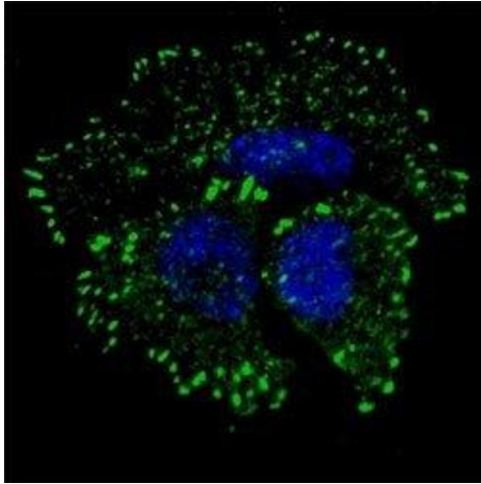
Precaution of Use: This product contains Sodium azide: a POISONOUS AND HAZARDOUS SUBSTANCE which should be handled by trained staff only.

---

Storage: -20 °C

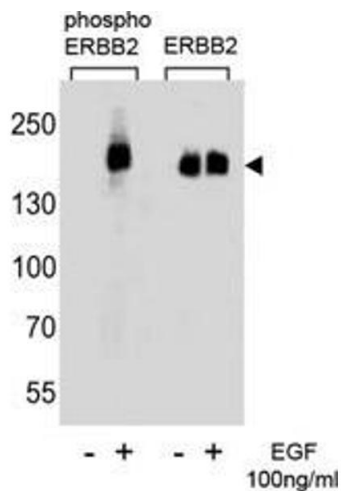
---

Storage Comment: Aliquot the phos-ERBB2 antibody and store frozen at -20°C or colder. Avoid repeated freeze-thaw cycles.



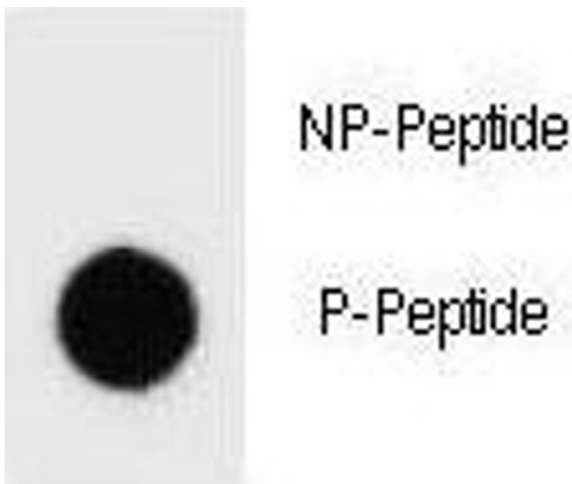
### Immunofluorescence

**Image 1.** Fluorescent confocal image of MCF7 cells stained with phos-ERBB2 antibody at 1;100. Note the highly specific localization to the plasma membrane and cytoplasm.



### Western Blotting

**Image 2.** Western blot analysis of extracts from A431 cells, untreated or treated with EGF (100ng/ml), using phos-ERBB2 antibody (left) or nonphos Ab (right)



### Dot Blot

**Image 3.** Dot blot analysis of phos-ERBB2 antibody. 50ng of phos-peptide or nonphos-peptide per dot were spotted.

Please check the [product details page](#) for more images. Overall 5 images are available for ABIN3029500.