

Datasheet for ABIN3029502
anti-ErbB2/Her2 antibody (pTyr1140)



[Go to Product page](#)

5 Images

Overview

Quantity:	0.4 mL
Target:	ErbB2/Her2
Binding Specificity:	pTyr1140
Reactivity:	Human, Mouse
Host:	Rabbit
Clonality:	Polyclonal
Conjugate:	This ErbB2/Her2 antibody is un-conjugated
Application:	Western Blotting (WB), ELISA, Dot Blot (DB)

Product Details

Immunogen:	This phospho-ErbB2 antibody was produced from rabbits immunized with a KLH conjugated synthetic phosphopeptide corresponding to amino acid residues surrounding pY1140 of mouse HER2/ERBB2.
Isotype:	Ig Fraction
Purification:	Antigen affinity purified

Target Details

Target:	ErbB2/Her2
Alternative Name:	ErbB2 (ErbB2/Her2 Products)
Background:	This gene encodes a member of the epidermal growth factor (EGF) receptor family of receptor tyrosine kinases. This protein has no ligand binding domain of its own and therefore cannot

Target Details

bind growth factors. However, it does bind tightly to other ligand-bound EGF receptor family members to form a heterodimer, stabilizing ligand binding and enhancing kinase-mediated activation of downstream signalling pathways, such as those involving mitogen-activated protein kinase and phosphatidylinositol-3 kinase. Allelic variations at amino acid positions 654 and 655 of isoform a (positions 624 and 625 of isoform b) have been reported, with the most common allele, Ile654/Ile655, shown here. Amplification and/or overexpression of this gene has been reported in numerous cancers, including breast and ovarian tumors. Alternative splicing results in several additional transcript variants, some encoding different isoforms and others that have not been fully characterized.

UniProt: [P70424](#)

Pathways: [RTK Signaling](#), [Fc-epsilon Receptor Signaling Pathway](#), [EGFR Signaling Pathway](#), [Neurotrophin Signaling Pathway](#), [Skeletal Muscle Fiber Development](#)

Application Details

Application Notes: Titration of the phospho-ErbB2 antibody may be required due to differences in protocols and secondary/substrate sensitivity.\. Western blot: 1:1000, Dot blot: 1:500

Restrictions: For Research Use only

Handling

Format: Liquid

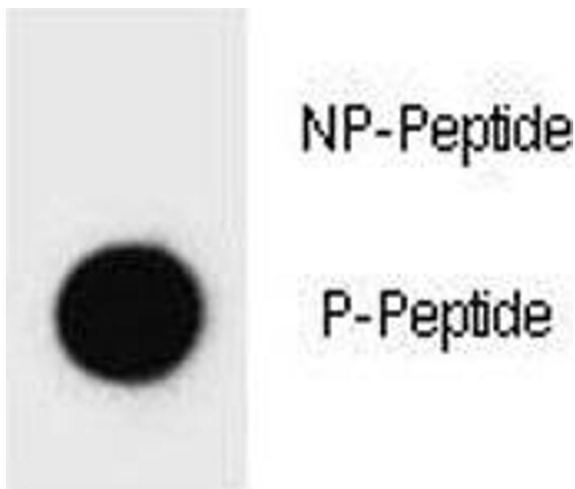
Buffer: In 1X PBS pH 7.4 with 0.09 % sodium azide

Preservative: Sodium azide

Precaution of Use: This product contains Sodium azide: a POISONOUS AND HAZARDOUS SUBSTANCE which should be handled by trained staff only.

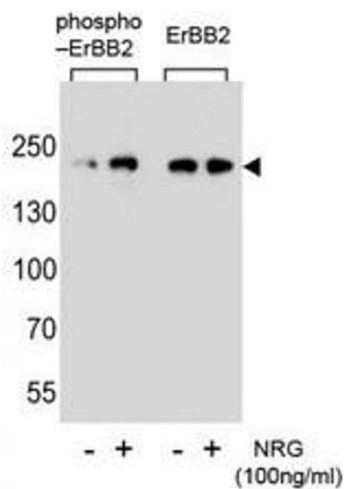
Storage: -20 °C

Storage Comment: Aliquot the phospho-ErbB2 antibody and store frozen at -20°C or colder. Avoid repeated freeze-thaw cycles.



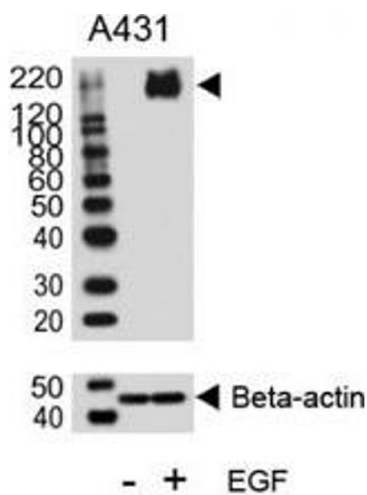
Dot Blot

Image 1. Dot blot analysis of phospho-ErbB2 antibody. 50ng of phospho-peptide or nonphospho-peptide per dot were spotted.



Western Blotting

Image 2. Western blot analysis of extracts from SK-BR-3 cell, untreated or treated with NRG, using phospho-ErbB2 (left) or nonphospho Ab (right).



Western Blotting

Image 3. Western blot analysis of lysate from A431 cell line, untreated or treated with EGF (100ng/ml), using phospho-ErbB2 antibody.

Please check the [product details page](#) for more images. Overall 5 images are available for ABIN3029502.