

Datasheet for ABIN3029510  
**anti-ErbB2/Her2 antibody (AA 1227-1255)**[Go to Product page](#)

## 5 Images

## Overview

Quantity:	0.4 mL
Target:	ErbB2/Her2
Binding Specificity:	AA 1227-1255
Reactivity:	Human
Host:	Rabbit
Clonality:	Polyclonal
Conjugate:	This ErbB2/Her2 antibody is un-conjugated
Application:	Western Blotting (WB), ELISA, Immunohistochemistry (IHC)

## Product Details

Immunogen:	A portion of amino acids 1227-1255 from the human protein was used as the immunogen for this anti-HER2 antibody.
Isotype:	Ig Fraction
Cross-Reactivity (Details):	Expected species reactivity: Mouse, Rat
Purification:	Antigen affinity purified

## Target Details

Target:	ErbB2/Her2
Alternative Name:	HER2 ( <a href="#">ErbB2/Her2 Products</a> )
Background:	HER2/ErbB2, a member of the EGF receptor family, is an essential component of a neuregulin-

## Target Details

receptor complex, although neuregulins do not interact with it alone. GP30 is a potential ligand for this receptor. This protein is not activated by EGF, TGF- $\alpha$  and amphiregulin. ErbB2 potentially forms a heterodimer with each of the other ERBB receptors. An interaction with PRKCABP has been suggested. Ligand-binding to this Type I membrane protein may increase phosphorylation on tyrosine residues.

UniProt: [P04626](#)

Pathways: [RTK Signaling](#), [Fc-epsilon Receptor Signaling Pathway](#), [EGFR Signaling Pathway](#), [Neurotrophin Signaling Pathway](#), [Skeletal Muscle Fiber Development](#)

## Application Details

Application Notes: Titration of the anti-HER2 antibody may be required due to differences in protocols and secondary/substrate sensitivity.\. Western blot: 1:1000,IHC (Paraffin): 1:10-1:50

Restrictions: For Research Use only

## Handling

Format: Liquid

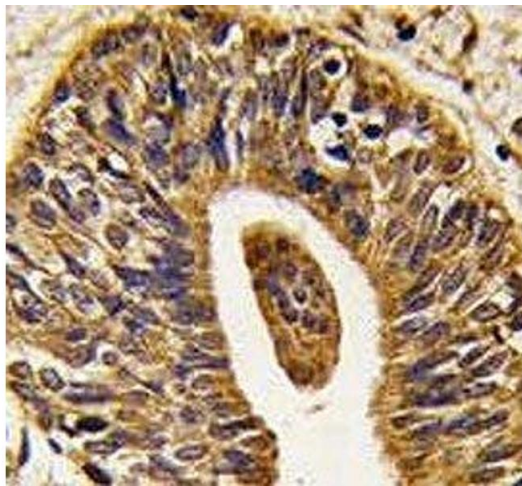
Buffer: In 1X PBS pH 7.4 with 0.09 % sodium azide

Preservative: Sodium azide

Precaution of Use: This product contains Sodium azide: a POISONOUS AND HAZARDOUS SUBSTANCE which should be handled by trained staff only.

Storage: -20 °C

Storage Comment: Aliquot the anti-HER2 antibody and store frozen at -20°C or colder. Avoid repeated freeze-thaw cycles.



#### Immunohistochemistry

**Image 1.** IHC analysis of FFPE human prostate carcinoma tissue stained with anti-HER2 antibody



#### Western Blotting

**Image 2.** Western blot analysis of anti-HER2 antibody and 293 cell lysate (2 ug/lane) either nontransfected (Lane 1) or transiently transfected with the ERBB2 gene (2).

#### Western Blotting

**Image 3.** Western blot analysis of anti-HER2 in T47D cell lysate, either noninduced (Lane 1) or induced with HRG (2).

Please check the [product details page](#) for more images. Overall 5 images are available for ABIN3029510.