



[Go to Product page](#)

Datasheet for ABIN3029524
anti-ERBB3 antibody (AA 24-55)

5 Images

Overview

Quantity:	0.4 mL
Target:	ERBB3
Binding Specificity:	AA 24-55
Reactivity:	Human, Mouse
Host:	Rabbit
Clonality:	Polyclonal
Conjugate:	This ERBB3 antibody is un-conjugated
Application:	Western Blotting (WB), ELISA, Immunohistochemistry (IHC), Flow Cytometry (FACS)

Product Details

Immunogen:	A portion of amino acids 24-55 from the human protein was used as the immunogen for this HER3 antibody.
Isotype:	Ig Fraction
Purification:	Purified

Target Details

Target:	ERBB3
Alternative Name:	HER3 (ERBB3 Products)
Background:	HER3/ErbB3, a member of the EGF receptor family, binds and is activated by neuregulins and NTAK. It potentially forms a heterodimer with each of the other ERBB receptors. This protein is predominantly expressed in epithelial tissues and brain. The cytoplasmic part of the receptor

Target Details

may interact with the SH2 or SH3 domains of many signal-transducing proteins. Ligand-binding may increase phosphorylation on tyrosine residues and promote its association with the p85 subunit of phosphatidylinositol 3-kinase ErbB3 is overexpressed in a subset of human mammary tumors.

UniProt: [P21860](#)

Pathways: [RTK Signaling](#), [Fc-epsilon Receptor Signaling Pathway](#), [EGFR Signaling Pathway](#), [Neurotrophin Signaling Pathway](#)

Application Details

Application Notes: Titration of the HER3 antibody may be required due to differences in protocols and secondary/substrate sensitivity.\. Western blot: 1:1000,IHC (Paraffin): 1:10-1:50,Flow Cytometry: 1:10-1:50

Restrictions: For Research Use only

Handling

Format: Liquid

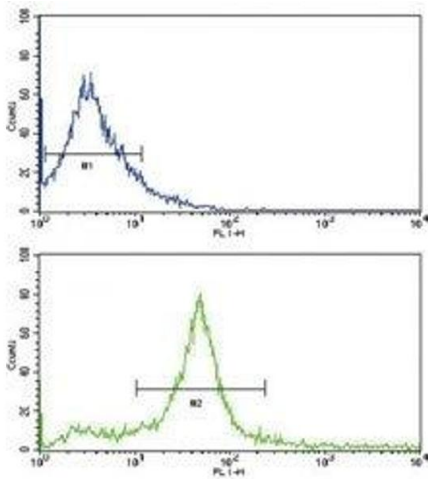
Buffer: In 1X PBS, pH 7.4, with 0.09 % sodium azide

Preservative: Sodium azide

Precaution of Use: This product contains Sodium azide: a POISONOUS AND HAZARDOUS SUBSTANCE which should be handled by trained staff only.

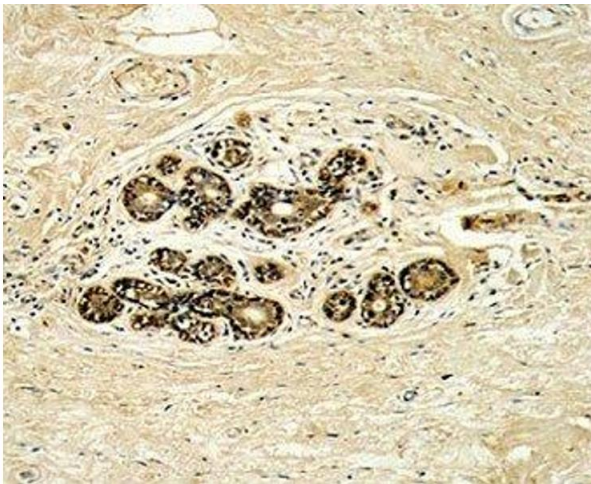
Storage: -20 °C

Storage Comment: Aliquot the HER3 antibody and store frozen at -20°C or colder. Avoid repeated freeze-thaw cycles.



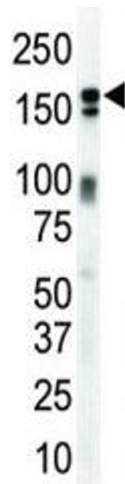
Flow Cytometry

Image 1. Flow cytometric analysis of 293 cells using HER3 antibody (bottom histogram) compared to a negative control (top histogram). FITC-conjugated goat-anti-rabbit secondary Ab was used for the analysis.



Immunohistochemistry

Image 2. IHC analysis of FFPE human breast carcinoma with HER3 antibody



Western Blotting

Image 3. Western blot analysis of HER3 antibody and mouse brain lysate. Predicted molecular weight: 140-180 kDa.

Please check the [product details page](#) for more images. Overall 5 images are available for ABIN3029524.