

Datasheet for ABIN3029526
anti-MAFA antibody (AA 286-315)

2 Images

[Go to Product page](#)

Overview

Quantity:	0.4 mL
Target:	MAFA
Binding Specificity:	AA 286-315
Reactivity:	Human
Host:	Rabbit
Clonality:	Polyclonal
Conjugate:	This MAFA antibody is un-conjugated
Application:	Western Blotting (WB), ELISA

Product Details

Immunogen:	A portion of amino acids 286-315 from the human protein was used as the immunogen for this MAFA antibody.
Isotype:	Ig Fraction
Cross-Reactivity (Details):	Expected species reactivity: Mouse
Purification:	Antigen affinity purified

Target Details

Target:	MAFA
Alternative Name:	MAFA (MAFA Products)
Background:	MAFA is a transcription factor that binds RIPE3b, a conserved enhancer element that regulates

Target Details

pancreatic beta cell-specific expression of the insulin gene.

UniProt: [Q8NHW3](#)

Pathways: [Hormone Transport](#)

Application Details

Application Notes: Titration of the MAFA antibody may be required due to differences in protocols and secondary/substrate sensitivity.\. Western blot: 1:1000

Restrictions: For Research Use only

Handling

Format: Liquid

Buffer: In 1X PBS, pH 7.4, with 0.09 % sodium azide

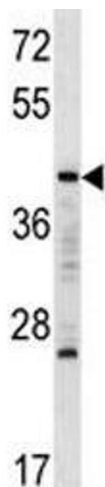
Preservative: Sodium azide

Precaution of Use: This product contains Sodium azide: a POISONOUS AND HAZARDOUS SUBSTANCE which should be handled by trained staff only.

Storage: -20 °C

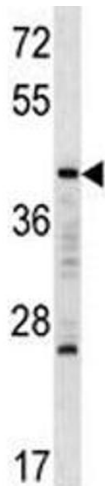
Storage Comment: Aliquot the MAFA antibody and store frozen at -20°C or colder. Avoid repeated freeze-thaw cycles.

Images



Western Blotting

Image 1. MAFA antibody western blot analysis in K562 lysate. Predicted molecular weight ~37 kDa.



Western Blotting

Image 2. MAFA antibody western blot analysis in K562 lysate. Predicted molecular weight ~37 kDa.