

Datasheet for ABIN3029527  
**anti-MAFA antibody (AA 282-311)**[Go to Product page](#)

## 2 Images

## Overview

Quantity:	0.4 mL
Target:	MAFA
Binding Specificity:	AA 282-311
Reactivity:	Human
Host:	Rabbit
Clonality:	Polyclonal
Conjugate:	This MAFA antibody is un-conjugated
Application:	Western Blotting (WB), ELISA

## Product Details

Immunogen:	A portion of amino acids 282-311 from the human protein was used as the immunogen for this MAFA antibody.
Isotype:	Ig Fraction
Cross-Reactivity (Details):	Expected species reactivity: Mouse
Purification:	Purified

## Target Details

Target:	MAFA
Alternative Name:	MAFA ( <a href="#">MAFA Products</a> )
Background:	MAFA is a transcription factor that binds RIPE3b, a conserved enhancer element that regulates

## Target Details

pancreatic beta cell-specific expression of the insulin gene.

UniProt: [Q8NHW3](#)

Pathways: [Hormone Transport](#)

## Application Details

Application Notes: Titration of the MAFA antibody may be required due to differences in protocols and secondary/substrate sensitivity.\. Western blot: 1:1000

Restrictions: For Research Use only

## Handling

Format: Liquid

Buffer: In 1X PBS, pH 7.4, with 0.09 % sodium azide

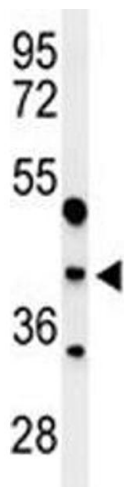
Preservative: Sodium azide

Precaution of Use: This product contains Sodium azide: a POISONOUS AND HAZARDOUS SUBSTANCE which should be handled by trained staff only.

Storage: -20 °C

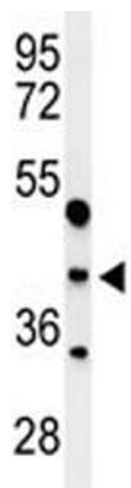
Storage Comment: Aliquot the MAFA antibody and store frozen at -20°C or colder. Avoid repeated freeze-thaw cycles.

## Images



### Western Blotting

**Image 1.** Western blot analysis of MAFA antibody and WiDr lysate. Predicted molecular weight ~37 kDa.



Western Blotting

**Image 2.** Western blot analysis of MAFA antibody and WiDr lysate. Predicted molecular weight ~37 kDa.