

Datasheet for ABIN3029528  
**anti-MAFA antibody (AA 203-231)**

## 2 Images

[Go to Product page](#)

## Overview

Quantity:	0.4 mL
Target:	MAFA
Binding Specificity:	AA 203-231
Reactivity:	Human, Mouse
Host:	Rabbit
Clonality:	Polyclonal
Conjugate:	This MAFA antibody is un-conjugated
Application:	Western Blotting (WB), ELISA

## Product Details

Immunogen:	A portion of amino acids 203-231 from the human protein was used as the immunogen for this MAFA antibody.
Isotype:	Ig Fraction
Purification:	Purified

## Target Details

Target:	MAFA
Alternative Name:	MAFA ( <a href="#">MAFA Products</a> )
Background:	MAFA is a transcription factor that binds RIPE3b, a conserved enhancer element that regulates pancreatic beta cell-specific expression of the insulin gene.

## Target Details

UniProt:	<a href="#">Q8NHW3</a>
Pathways:	<a href="#">Hormone Transport</a>

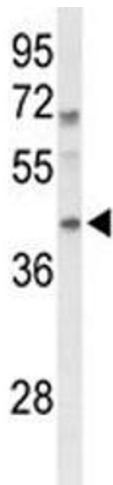
## Application Details

Application Notes:	Titration of the MAFA antibody may be required due to differences in protocols and secondary/substrate sensitivity.\. Western blot: 1:1000
Restrictions:	For Research Use only

## Handling

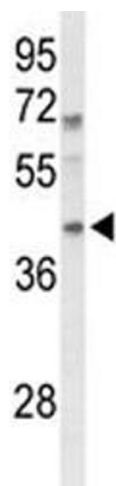
Format:	Liquid
Buffer:	In 1X PBS, pH 7.4, with 0.09 % sodium azide
Preservative:	Sodium azide
Precaution of Use:	This product contains Sodium azide: a POISONOUS AND HAZARDOUS SUBSTANCE which should be handled by trained staff only.
Storage:	-20 °C
Storage Comment:	Aliquot the MAFA antibody and store frozen at -20°C or colder. Avoid repeated freeze-thaw cycles.

## Images



### Western Blotting

**Image 1.** Western blot analysis of MAFA antibody and mouse spleen tissue lysate. Predicted molecular weight ~37 kDa.



#### Western Blotting

**Image 2.** Western blot analysis of MAFA antibody and mouse spleen tissue lysate. Predicted molecular weight ~37 kDa.