



[Go to Product page](#)

Datasheet for ABIN3029542
anti-BRAF antibody (AA 424-453)

7 Images

Overview

Quantity:	0.4 mL
Target:	BRAF
Binding Specificity:	AA 424-453
Reactivity:	Human
Host:	Rabbit
Clonality:	Polyclonal
Conjugate:	This BRAF antibody is un-conjugated
Application:	Western Blotting (WB), ELISA, Immunohistochemistry (IHC), Immunofluorescence (IF), Flow Cytometry (FACS)

Product Details

Immunogen:	A portion of amino acids 424-453 from the human protein was used as the immunogen for this BRAF antibody.
Isotype:	Ig Fraction
Cross-Reactivity (Details):	Expected species reactivity: Mouse, Chicken
Purification:	Antigen affinity purified

Target Details

Target:	BRAF
Alternative Name:	BRAF (BRAF Products)

Target Details

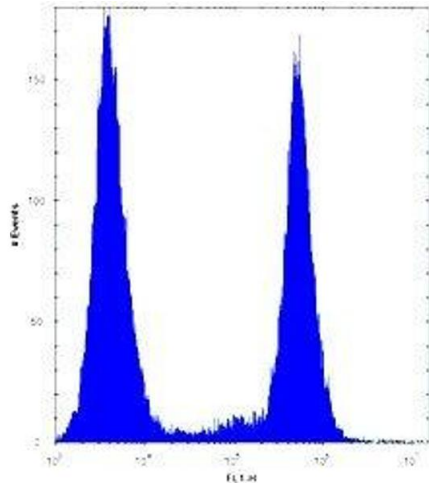
Background:	BRAF is a protein kinase involved in the transduction of mitogenic signals from the cell membrane to the nucleus. May play a role in the postsynaptic responses of hippocampal neuron. Phosphorylates MAP2K1, and thereby contributes to the MAP kinase signal transduction pathway. [UniProt]
UniProt:	P15056
Pathways:	MAPK Signaling , RTK Signaling , Neurotrophin Signaling Pathway , Ribonucleoprotein Complex Subunit Organization , Hepatitis C , Autophagy

Application Details

Application Notes:	The stated application concentrations are suggested starting amounts. Titration of the BRAF antibody may be required due to differences in protocols and secondary/substrate sensitivity.\ Western blot: 1:1000,IHC (Paraffin): 1:10-1:50,Immunofluorescence: 1:10-1:50,Flow Cytometry: 1:10-1:50
Restrictions:	For Research Use only

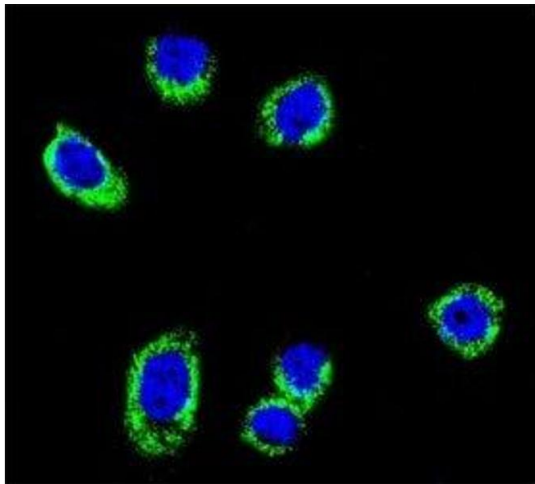
Handling

Format:	Liquid
Buffer:	In 1X PBS, pH 7.4, with 0.09 % sodium azide
Preservative:	Sodium azide
Precaution of Use:	This product contains Sodium azide: a POISONOUS AND HAZARDOUS SUBSTANCE which should be handled by trained staff only.
Storage:	-20 °C
Storage Comment:	Store at 4°C for up to one month. For long term, aliquot the BRAF antibody and store frozen at -20°C or colder. Avoid repeated freeze-thaw cycles.



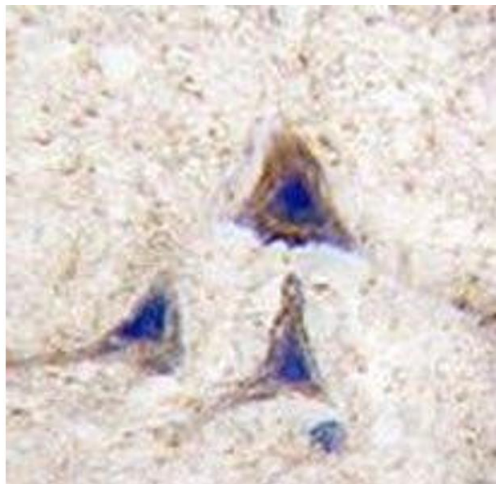
Flow Cytometry

Image 1. BRAF antibody flow cytometric analysis of HeLa cells (right histogram) compared to a negative control (left histogram).



Immunofluorescence

Image 2. Confocal immunofluorescent analysis of BRAF antibody with HeLa cells followed by Alexa Fluor 488-conjugated goat anti-rabbit IgG (green). DAPI was used as a nuclear counterstain (blue).



Immunohistochemistry

Image 3. IHC analysis of FFPE human brain tissue stained with BRAF antibody

Please check the [product details page](#) for more images. Overall 7 images are available for ABIN3029542.