

Datasheet for ABIN3029553  
**anti-Src antibody (AA 397-424)**[Go to Product page](#)

## 7 Images

## Overview

Quantity:	0.4 mL
Target:	Src
Binding Specificity:	AA 397-424
Reactivity:	Human
Host:	Rabbit
Clonality:	Polyclonal
Conjugate:	This Src antibody is un-conjugated
Application:	Western Blotting (WB), ELISA, Immunohistochemistry (IHC), Immunofluorescence (IF)

## Product Details

Immunogen:	A portion of amino acids 397-424 from the human protein was used as the immunogen for this Src antibody.
Isotype:	Ig Fraction
Cross-Reactivity (Details):	Expected species reactivity: Bovine, Chicken, Mouse, Pig, Rat, Xenopus, Zebrafish
Purification:	Antigen affinity purified

## Target Details

Target:	Src
Alternative Name:	Src ( <a href="#">Src Products</a> )
Target Type:	Viral Protein

## Target Details

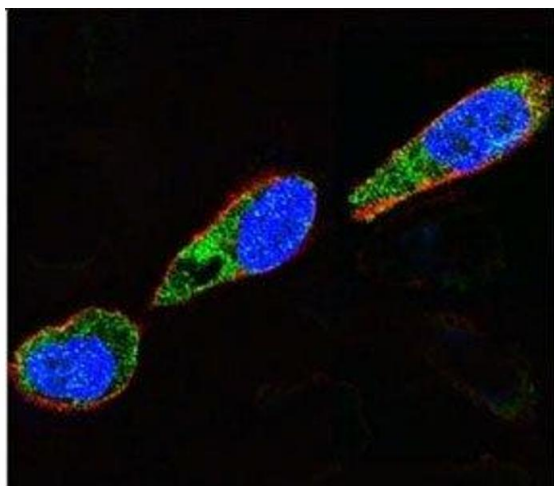
Background:	Src is a tyrosine-protein kinase whose activity can be inhibited by phosphorylation by c-Src kinase.
UniProt:	<a href="#">P12931</a>
Pathways:	<a href="#">JAK-STAT Signaling</a> , <a href="#">Neurotrophin Signaling Pathway</a> , <a href="#">Intracellular Steroid Hormone Receptor Signaling Pathway</a> , <a href="#">Regulation of Intracellular Steroid Hormone Receptor Signaling</a> , <a href="#">Cellular Response to Molecule of Bacterial Origin</a> , <a href="#">Cell-Cell Junction Organization</a> , <a href="#">Regulation of Carbohydrate Metabolic Process</a> , <a href="#">Autophagy</a> , <a href="#">CXCR4-mediated Signaling Events</a> , <a href="#">Signaling Events mediated by VEGFR1 and VEGFR2</a> , <a href="#">Smooth Muscle Cell Migration</a> , <a href="#">Negative Regulation of intrinsic apoptotic Signaling</a> , <a href="#">Platelet-derived growth Factor Receptor Signaling</a> , <a href="#">Thromboxane A2 Receptor Signaling</a> , <a href="#">Signaling of Hepatocyte Growth Factor Receptor</a> , <a href="#">VEGF Signaling</a>

## Application Details

Application Notes:	Titration of the Src antibody may be required due to differences in protocols and secondary/substrate sensitivity.\. Western blot: 1:1000,IHC (Paraffin): 1:50-1:100,Immunofluorescence: 1:10-1:50
Restrictions:	For Research Use only

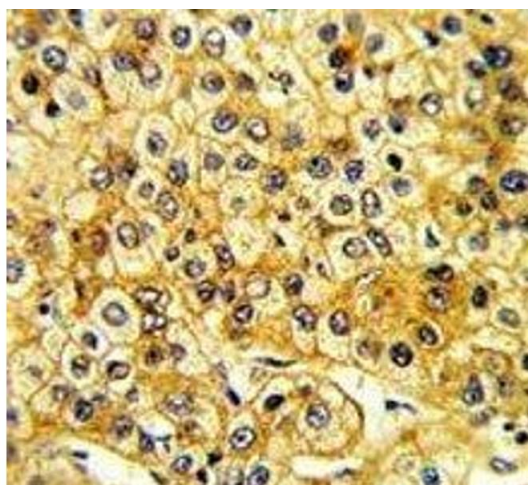
## Handling

Format:	Liquid
Buffer:	In 1X PBS, pH 7.4, with 0.09 % sodium azide
Preservative:	Sodium azide
Precaution of Use:	This product contains Sodium azide: a POISONOUS AND HAZARDOUS SUBSTANCE which should be handled by trained staff only.
Storage:	-20 °C
Storage Comment:	Aliquot the Src antibody and store frozen at -20°C or colder. Avoid repeated freeze-thaw cycles.



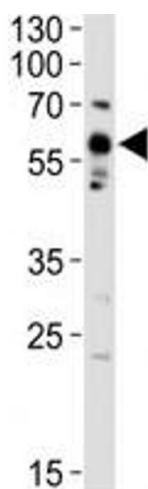
#### Immunofluorescence

**Image 1.** Confocal immunofluorescent analysis of Src antibody with A375 cells followed by Alexa Fluor 488-conjugated goat anti-rabbit IgG (green). Actin filaments have been labeled with Alexa Fluor 555 Phalloidin (red). DAPI was used as a nuclear counterstain (blue).



#### Immunohistochemistry

**Image 2.** IHC analysis of FFPE human hepatocarcinoma with Src antibody.



#### Western Blotting

**Image 3.** Western blot analysis of lysate from A375 cell line using Src antibody diluted at 1:1000.

Please check the [product details page](#) for more images. Overall 7 images are available for ABIN3029553.