

Datasheet for ABIN3029562

anti-Src antibody

5 Images

[Go to Product page](#)

Overview

Quantity:	0.4 mL
Target:	Src
Reactivity:	Human, Mouse
Host:	Mouse
Clonality:	Monoclonal
Conjugate:	This Src antibody is un-conjugated
Application:	Western Blotting (WB), ELISA, Immunofluorescence (IF)

Product Details

Immunogen:	This anti-Src antibody was produced from a mouse immunized with a full length recombinant human protein.
Clone:	17AT28
Isotype:	IgG1
Purification:	Purified

Target Details

Target:	Src
Alternative Name:	Src (Src Products)
Target Type:	Viral Protein
Background:	This gene is highly similar to the v-src gene of Rous sarcoma virus. This proto-oncogene may

Target Details

play a role in the regulation of embryonic development and cell growth. The protein encoded by this gene is a tyrosine-protein kinase whose activity can be inhibited by phosphorylation by c-Src kinase. Mutations in this gene could be involved in the malignant progression of colon cancer. Two transcript variants encoding the same protein have been found for this gene.

UniProt: [P12931](#)

Pathways: [JAK-STAT Signaling](#), [Neurotrophin Signaling Pathway](#), [Intracellular Steroid Hormone Receptor Signaling Pathway](#), [Regulation of Intracellular Steroid Hormone Receptor Signaling](#), [Cellular Response to Molecule of Bacterial Origin](#), [Cell-Cell Junction Organization](#), [Regulation of Carbohydrate Metabolic Process](#), [Autophagy](#), [CXCR4-mediated Signaling Events](#), [Signaling Events mediated by VEGFR1 and VEGFR2](#), [Smooth Muscle Cell Migration](#), [Negative Regulation of intrinsic apoptotic Signaling](#), [Platelet-derived growth Factor Receptor Signaling](#), [Thromboxane A2 Receptor Signaling](#), [Signaling of Hepatocyte Growth Factor Receptor](#), [VEGF Signaling](#)

Application Details

Application Notes: Titration of the anti-Src antibody may be required due to differences in protocols and secondary/substrate sensitivity.\. Immunofluorescence: 1:10-1:50,Western blot: 1:100-1000

Restrictions: For Research Use only

Handling

Format: Liquid

Buffer: In 1X PBS, pH 7.4, with 0.09 % sodium azide

Preservative: Sodium azide

Precaution of Use: This product contains Sodium azide: a POISONOUS AND HAZARDOUS SUBSTANCE which should be handled by trained staff only.

Storage: -20 °C

Storage Comment: Aliquot the anti-Src antibody and store frozen at -20°C or colder. Avoid repeated freeze-thaw cycles.

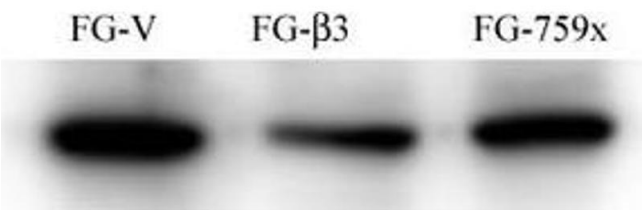
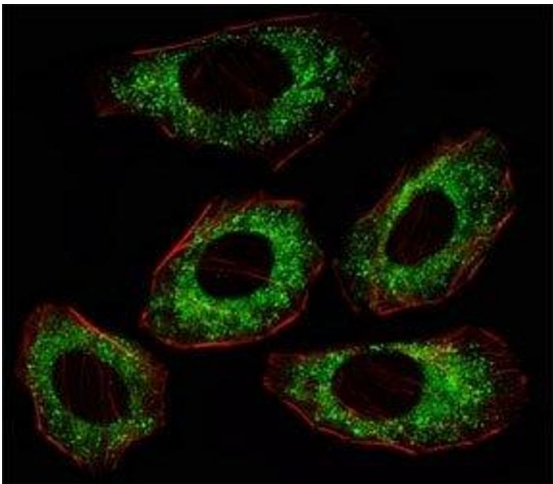
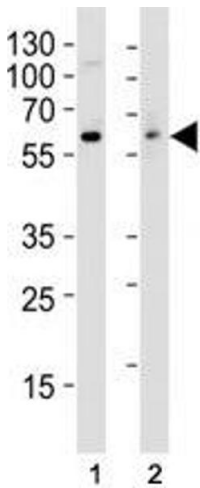


Image 1. FG Pancreatic Carcinoma Cell Lines stably expressing vector along (FG-V) the b3 integrin subunit (FG-β3) or a b3 truncation mutant (FG-759x). Src antibody was diluted 1:500 and incubated overnight at 4°C. Data and protocol kindly provided by Dr. Weis of



Immunofluorescence

Image 2. Fluorescent image of A549 cell stained with anti-Src antibody at 1:25. Immunoreactivity is localized to the cytoplasm.



Western Blotting

Image 3. Western blot analysis of lysate from (1) HT29 and (2) Jurkat cell line using anti-Src antibody at 1:1000.

Please check the [product details page](#) for more images. Overall 5 images are available for ABIN3029562.