



[Go to Product page](#)

Datasheet for ABIN3029564
anti-LYN antibody (AA 32-62)

5 Images

Overview

Quantity:	0.4 mL
Target:	LYN
Binding Specificity:	AA 32-62
Reactivity:	Human
Host:	Rabbit
Clonality:	Polyclonal
Conjugate:	This LYN antibody is un-conjugated
Application:	Western Blotting (WB), ELISA, Immunohistochemistry (IHC), Flow Cytometry (FACS)

Product Details

Immunogen:	A portion of amino acids 32-62 from the human protein was used as the immunogen for this LYN antibody.
Isotype:	Ig Fraction
Purification:	Antigen affinity purified

Target Details

Target:	LYN
Alternative Name:	LYN (LYN Products)
Background:	Lyn is a protein tyrosine kinase which is important in cellular signaling. It contains an SH2 and SH3 domain and has been found to be cleaved after activation of caspases in apoptosis.

Target Details

UniProt: [P07948](#)

Pathways: [Fc-epsilon Receptor Signaling Pathway](#), [Hormone Transport](#), [Response to Growth Hormone Stimulus](#), [Cellular Response to Molecule of Bacterial Origin](#), [Regulation of Leukocyte Mediated Immunity](#), [Positive Regulation of Immune Effector Process](#), [CXCR4-mediated Signaling Events](#), [Thromboxane A2 Receptor Signaling](#), [Integrin Complex](#), [BCR Signaling](#)

Application Details

Application Notes: Titration of the LYN antibody may be required due to differences in protocols and secondary/substrate sensitivity.\. Western blot: 1:1000,Flow Cytometry: 1:10-1:50,IHC (Paraffin): 1:50-1:100

Restrictions: For Research Use only

Handling

Format: Liquid

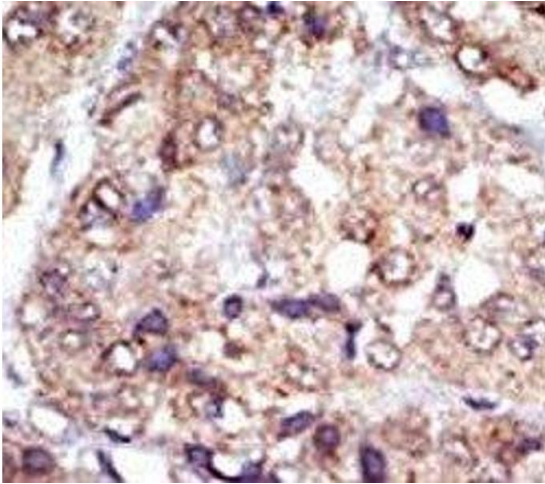
Buffer: In 1X PBS, pH 7.4, with 0.09 % sodium azide

Preservative: Sodium azide

Precaution of Use: This product contains Sodium azide: a POISONOUS AND HAZARDOUS SUBSTANCE which should be handled by trained staff only.

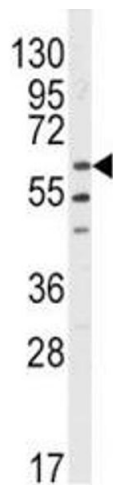
Storage: -20 °C

Storage Comment: Aliquot the LYN antibody and store frozen at -20°C or colder. Avoid repeated freeze-thaw cycles.



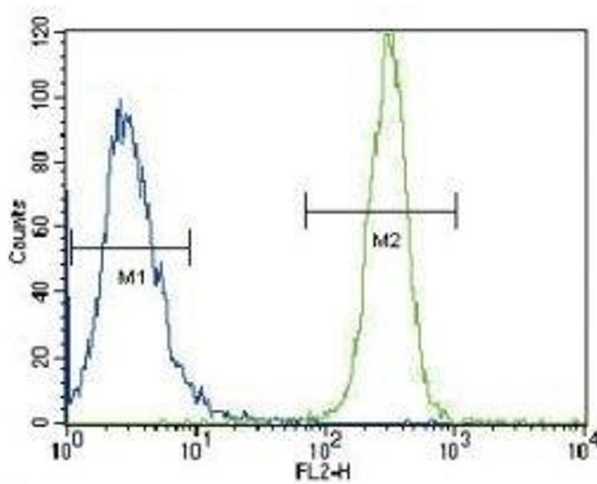
Immunohistochemistry

Image 1. IHC analysis of FFPE human hepatocarcinoma tissue stained with the LYN antibody



Western Blotting

Image 2. Western blot analysis of LYN antibody and HL-60 lysate.



Flow Cytometry

Image 3. LYN antibody flow cytometric analysis of HeLa cells (green) compared to a negative control (blue). FITC-conjugated goat-anti-rabbit secondary Ab was used for the analysis.

Please check the [product details page](#) for more images. Overall 5 images are available for ABIN3029564.