

Datasheet for ABIN3029565
anti-V5 Epitope Tag antibody

3 Images

1 Publication

[Go to Product page](#)

Overview

Quantity:	0.4 mL
Target:	V5 Epitope Tag
Reactivity:	Please inquire
Host:	Rabbit
Clonality:	Polyclonal
Conjugate:	This V5 Epitope Tag antibody is un-conjugated
Application:	Western Blotting (WB), ELISA

Product Details

Immunogen:	The V5 sequence GKIPNPLLGLDST was used as the immunogen for the V5 tag antibody.
Sequence:	GKIPNPLLG LDST
Isotype:	Ig Fraction
Purification:	Purified

Target Details

Target:	V5 Epitope Tag
Alternative Name:	V5 Tag (V5 Epitope Tag Products)
Target Type:	Tag
Background:	Epitope tags consisting of short sequences recognized by well-characterized antibodies have been widely used in the study of protein expression in various systems. The V5 epitope tag is is

Target Details

composed of a 14 residue peptide, GKPIPPLLGLDST, derived from a small epitope (Pk) present on the P and V proteins of the paramyxovirus of simian virus 5 (SV5). NSJBio's anti-V5 tag polyclonal antibody provides a simple solution to detect the expression of a V5-tagged protein in cells.

Application Details

Application Notes: Titration of the V5 Tag antibody may be required due to differences in protocols and secondary/substrate sensitivity.\. Western blot: 1:1000

Restrictions: For Research Use only

Handling

Format: Liquid

Buffer: In 1X PBS, pH 7.4, with 0.09 % sodium azide

Preservative: Sodium azide

Precaution of Use: This product contains Sodium azide: a POISONOUS AND HAZARDOUS SUBSTANCE which should be handled by trained staff only.

Storage: -20 °C

Storage Comment: Aliquot the V5 Tag antibody and store frozen at -20°C or colder. Avoid repeated freeze-thaw cycles.

Publications

Product cited in: Aagaard, Fischer, Lober, Neumann, Allahverdi, Sivelle, Miehe, Spillner: "Extract-Shaped Immune Repertoires as Source for Nanobody-Based Human IgE in Grass Pollen Allergy." in: **Molecular biotechnology**, Vol. 65, Issue 9, pp. 1518-1527, (2023) ([PubMed](#)).

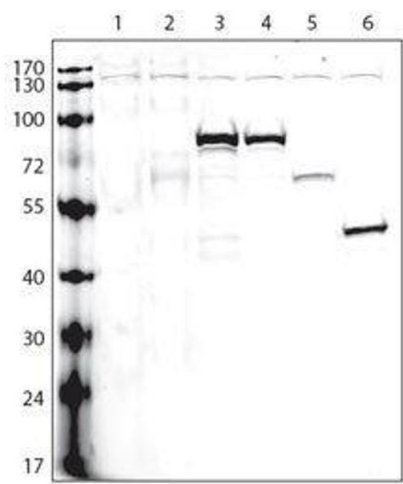


Image 1. Lanes: 1: non-transfected cells; 2: V5-tagged empty plasmid; and V5-tagged proteins: 3-A, 4-B, 5-C, 6-D; Data courtesy of Dr. Gustavo Gutierrez, Burnham Institute for Medical Research.



Western Blotting

Image 2. Western blot analysis of V5 Tag antibody and 12 tagged protein lysate.

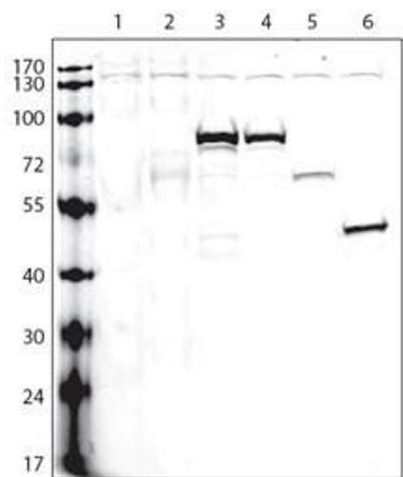


Image 3. Lanes: 1: non-transfected cells