

Datasheet for ABIN3029566
anti-VCP antibody (AA 726-755)



[Go to Product page](#)

5 Images

Overview

Quantity:	0.4 mL
Target:	VCP
Binding Specificity:	AA 726-755
Reactivity:	Human
Host:	Rabbit
Clonality:	Polyclonal
Conjugate:	This VCP antibody is un-conjugated
Application:	Western Blotting (WB), ELISA, Immunohistochemistry (IHC), Flow Cytometry (FACS)

Product Details

Immunogen:	A portion of amino acids 726-755 from the human protein was used as the immunogen for this VCP antibody.
Isotype:	Ig Fraction
Cross-Reactivity (Details):	Expected species reactivity: Mouse, Rat, Bovine, Pig, Zebrafish, Xenopus
Purification:	Antigen affinity purified

Target Details

Target:	VCP
Alternative Name:	VCP (VCP Products)
Background:	VCP is a member of a family that includes putative ATP-binding proteins involved in vesicle

Target Details

transport and fusion, 26S proteasome function, and assembly of peroxisomes. This protein, as a structural protein, is associated with clathrin, and heat-shock protein Hsc70, to form a complex. It has been implicated in a number of cellular events that are regulated during mitosis, including homotypic membrane fusion, spindle pole body function, and ubiquitin-dependent protein degradation.

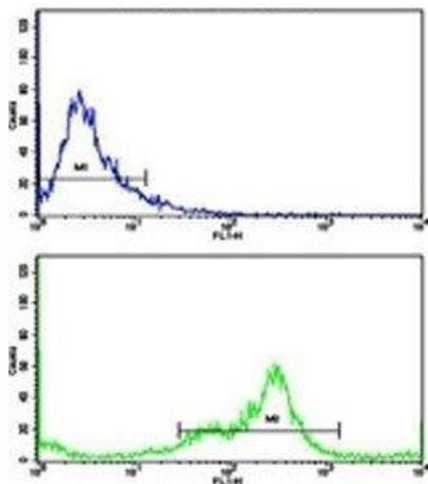
UniProt:	P55072
Pathways:	ER-Nucleus Signaling , Positive Regulation of Endopeptidase Activity , Ubiquitin Proteasome Pathway

Application Details

Application Notes:	Titration of the VCP antibody may be required due to differences in protocols and secondary/substrate sensitivity.\. Western blot: 1:1000,IHC (Paraffin): 1:50-1:100,Flow Cytometry: 1:10-1:50
Restrictions:	For Research Use only

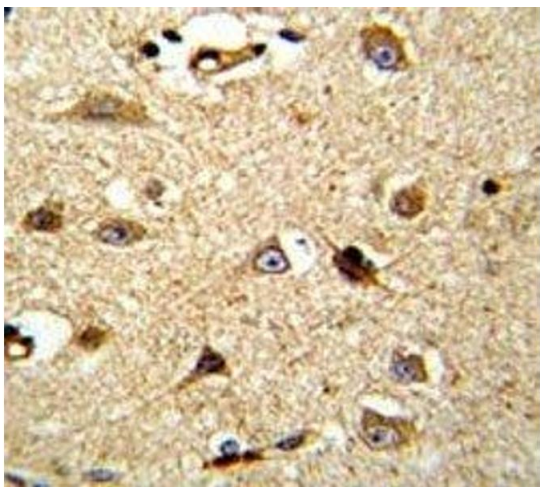
Handling

Format:	Liquid
Buffer:	In 1X PBS, pH 7.4, with 0.09 % sodium azide
Preservative:	Sodium azide
Precaution of Use:	This product contains Sodium azide: a POISONOUS AND HAZARDOUS SUBSTANCE which should be handled by trained staff only.
Storage:	-20 °C
Storage Comment:	Aliquot the VCP antibody and store frozen at -20°C or colder. Avoid repeated freeze-thaw cycles.



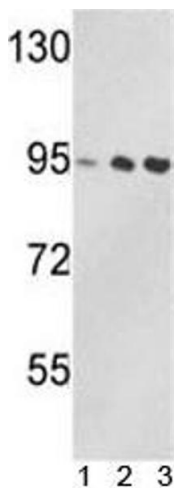
Flow Cytometry

Image 1. Flow cytometric analysis of MDA-231 cells using VCP antibody (green) compared to a negative control (blue). FITC-conjugated goat-anti-rabbit secondary Ab was used for the analysis.



Immunohistochemistry

Image 2. IHC analysis of FFPE human brain tissue stained with VCP antibody



Western Blotting

Image 3. Western blot analysis of VCP antibody and 1) Jurkat, 2) 293, and 3) MDA-MB231 lysate.

Please check the [product details page](#) for more images. Overall 5 images are available for ABIN3029566.