

Datasheet for ABIN3029583
anti-VEGFC antibody (AA 248-277)



[Go to Product page](#)

2 Images

Overview

Quantity:	0.4 mL
Target:	VEGFC
Binding Specificity:	AA 248-277
Reactivity:	Human
Host:	Rabbit
Clonality:	Polyclonal
Conjugate:	This VEGFC antibody is un-conjugated
Application:	Western Blotting (WB), ELISA, Immunohistochemistry (IHC)

Product Details

Immunogen:	A portion of amino acids 248-277 from the human protein was used as the immunogen for this VEGFC antibody.
Isotype:	Ig Fraction
Purification:	Purified

Target Details

Target:	VEGFC
Alternative Name:	VEGFC (VEGFC Products)
Background:	VEGFC is a member of the platelet-derived growth factor/vascular endothelial growth factor (PDGF/VEGF) family, is active in angiogenesis and endothelial cell growth, and can also affect the permeability of blood vessels. This secreted protein undergoes a complex proteolytic

Target Details

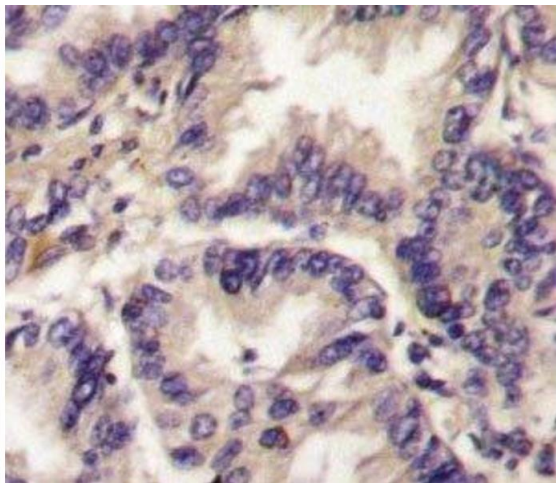
maturation, generating multiple processed forms which bind and activate VEGFR-3 receptors. Only the fully processed form can bind and activate VEGFR-2 receptors. This protein is structurally and functionally similar to vascular endothelial growth factor D.

UniProt:	P49767
Pathways:	RTK Signaling , Signaling Events mediated by VEGFR1 and VEGFR2

Application Details

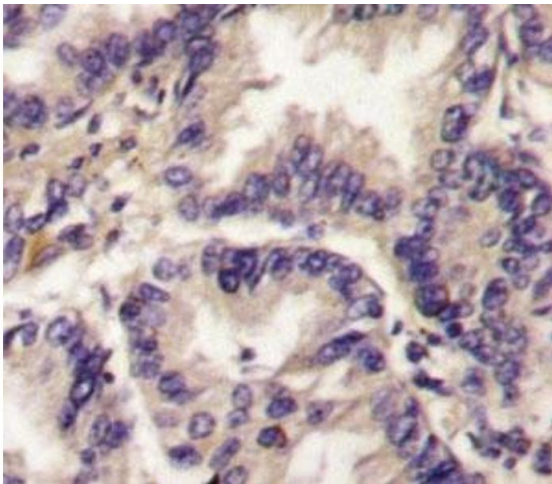
Application Notes:	Titration of the VEGFC antibody may be required due to differences in protocols and secondary/substrate sensitivity.\. Western blot: 1:1000,IHC (Paraffin): 1:10-1:50
Restrictions:	For Research Use only
Handling	
Format:	Liquid
Buffer:	In 1X PBS, pH 7.4, with 0.09 % sodium azide
Preservative:	Sodium azide
Precaution of Use:	This product contains Sodium azide: a POISONOUS AND HAZARDOUS SUBSTANCE which should be handled by trained staff only.
Storage:	-20 °C
Storage Comment:	Aliquot the VEGFC antibody and store frozen at -20°C or colder. Avoid repeated freeze-thaw cycles.

Images



Immunohistochemistry

Image 1. IHC analysis of FFPE human lung carcinoma tissue stained with VEGFC antibody



Immunohistochemistry

Image 2. IHC analysis of FFPE human lung carcinoma tissue stained with VEGFC antibody