

Datasheet for ABIN3029596  
**anti-Vinculin antibody (AA 173-188)**

## 5 Images

[Go to Product page](#)

## Overview

Quantity:	100 µg
Target:	Vinculin (VCL)
Binding Specificity:	AA 173-188
Reactivity:	Mouse
Host:	Rabbit
Clonality:	Polyclonal
Conjugate:	This Vinculin antibody is un-conjugated
Application:	Western Blotting (WB), Immunohistochemistry (Paraffin-embedded Sections) (IHC (p))

## Product Details

Immunogen:	Amino acids 173-188 (KMIDERQQELTHQEHR) were used as the immunogen for this Vinculin antibody (100% homologous in human, mouse and rat).
Isotype:	IgG
Purification:	Antigen affinity

## Target Details

Target:	Vinculin (VCL)
Alternative Name:	Vinculin ( <a href="#">VCL Products</a> )
Background:	In mammalian cells, Vinculin is a membrane-cytoskeletal protein in focal adhesion plaques that is involved in linkage of integrin adhesion molecules to the actin cytoskeleton. By linkage studies in a 3-generation family, Mulligan et al.(1992) mapped the VCL gene to chromosome

## Target Details

10q22.1-q23, distal to D10S22. It is a cytoskeletal protein associated with cell-cell and cell-matrix junctions, where it is thought to function as one of several interacting proteins involved in anchoring F-actin to the membrane. Multiple alternatively-spliced transcript variants have been found for this gene, but the biological validity of some variants has not been determined. The human protein exhibits a greater-than-95 % sequence identity to the chicken protein. Vinculin is a 117- kDa cytoskeletal protein with 1066 amino acids. The protein contains an acidic N-terminal domain and a basic C-terminal domain separated by a proline-rich middle segment. It has a globular head domain that contains binding sites for talin and alpha-actinin as well as a tyrosine phosphorylation site, while the tail region contains binding sites for F-actin, paxillin, and lipids.

UniProt: [P18206](#)

Pathways: [Cell-Cell Junction Organization](#), [Maintenance of Protein Location](#), [Signaling Events mediated by VEGFR1 and VEGFR2](#)

## Application Details

Application Notes: The stated application concentrations are suggested starting points. Titration of the Vinculin antibody may be required due to differences in protocols and secondary/substrate sensitivity.\. Western blot: 0.5-1 µg/mL,IHC (Paraffin): 0.5-1 µg/mL

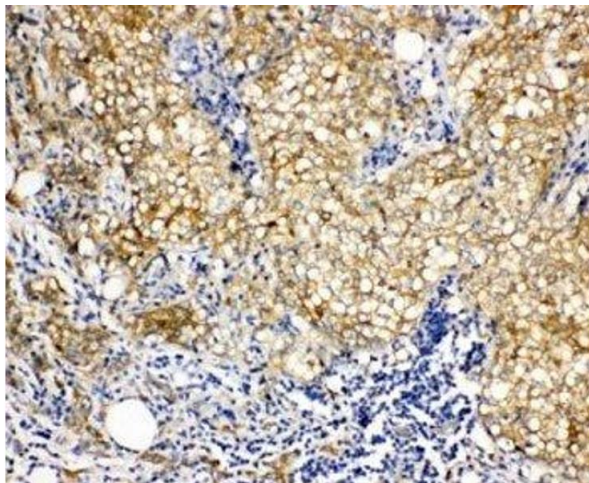
Restrictions: For Research Use only

## Handling

Buffer: 0.5 mg/mL if reconstituted with 0.2 mL sterile DI water

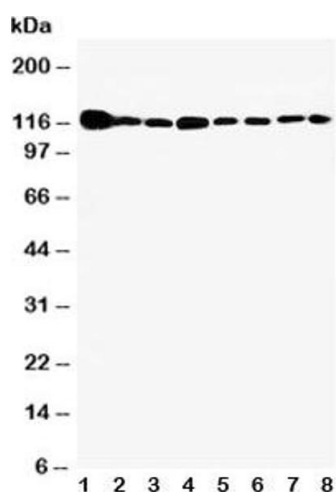
Storage: -20 °C

Storage Comment: After reconstitution, the Vinculin antibody can be stored for up to one month at 4°C. For long-term, aliquot and store at -20°C. Avoid repeated freezing and thawing.



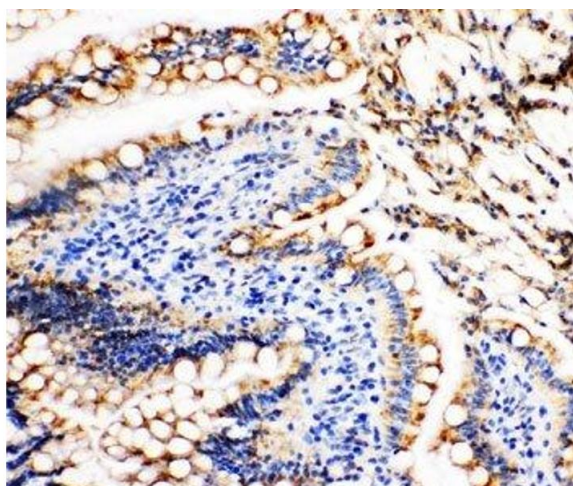
#### Immunohistochemistry

**Image 1.** IHC-P: Vinculin antibody testing of human breast cancer tissue



#### Western Blotting

**Image 2.** Western blot testing of Vinculin antibody and Lane 1: rat heart; 2: rat brain; 3: rat liver; 4: U87; 5: SMMC-7721; 6: HEPA; 7: HeLa; 8: HT1080 cell lysate



#### Immunohistochemistry

**Image 3.** IHC-P: Vinculin antibody testing of rat intestine tissue

Please check the [product details page](#) for more images. Overall 5 images are available for ABIN3029596.